

**A. TRANSIT CENTER  
240 N. MT. VERNON AVE**

HERMOSA ST

240 N. Mt. Vernon Ave

SWEET BRIER AVE

SAMOA ST

MT. VERNON AVE

214 ft

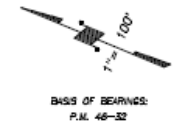
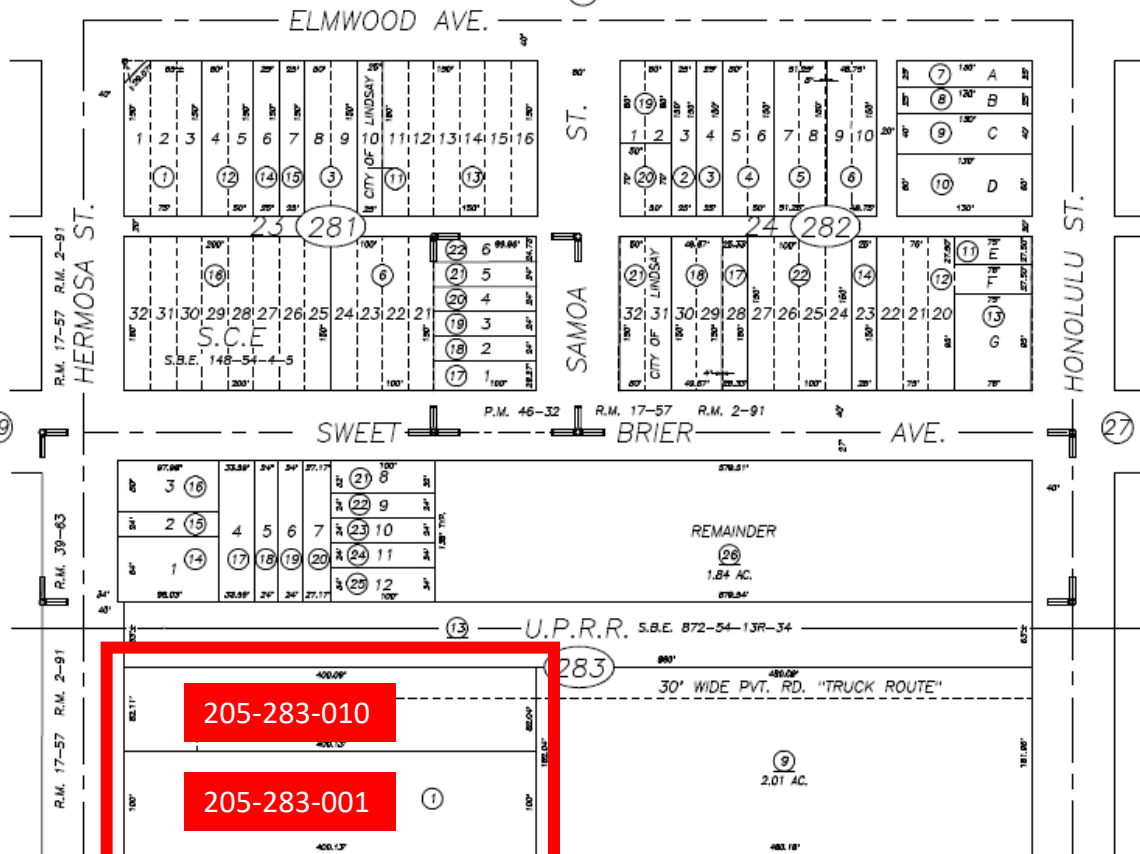


# A. ASSESSOR'S MAP

**DISCLAIMER**  
 THIS MAP WAS PREPARED FOR LOCAL PROPERTY ASSESSMENT PURPOSES ONLY AND THE PARCELS SHOWN HEREON MAY NOT COMPLY WITH STATE AND LOCAL SUBDIVISION ORDINANCES, AND NO LIABILITY IS ASSUMED FOR THE USE OF THE INFORMATION SHOWN HEREON.

POR. SEC.7, T.20S., R.27E., M.B.D.&M.

Tax Area Code 205-28  
 003-018



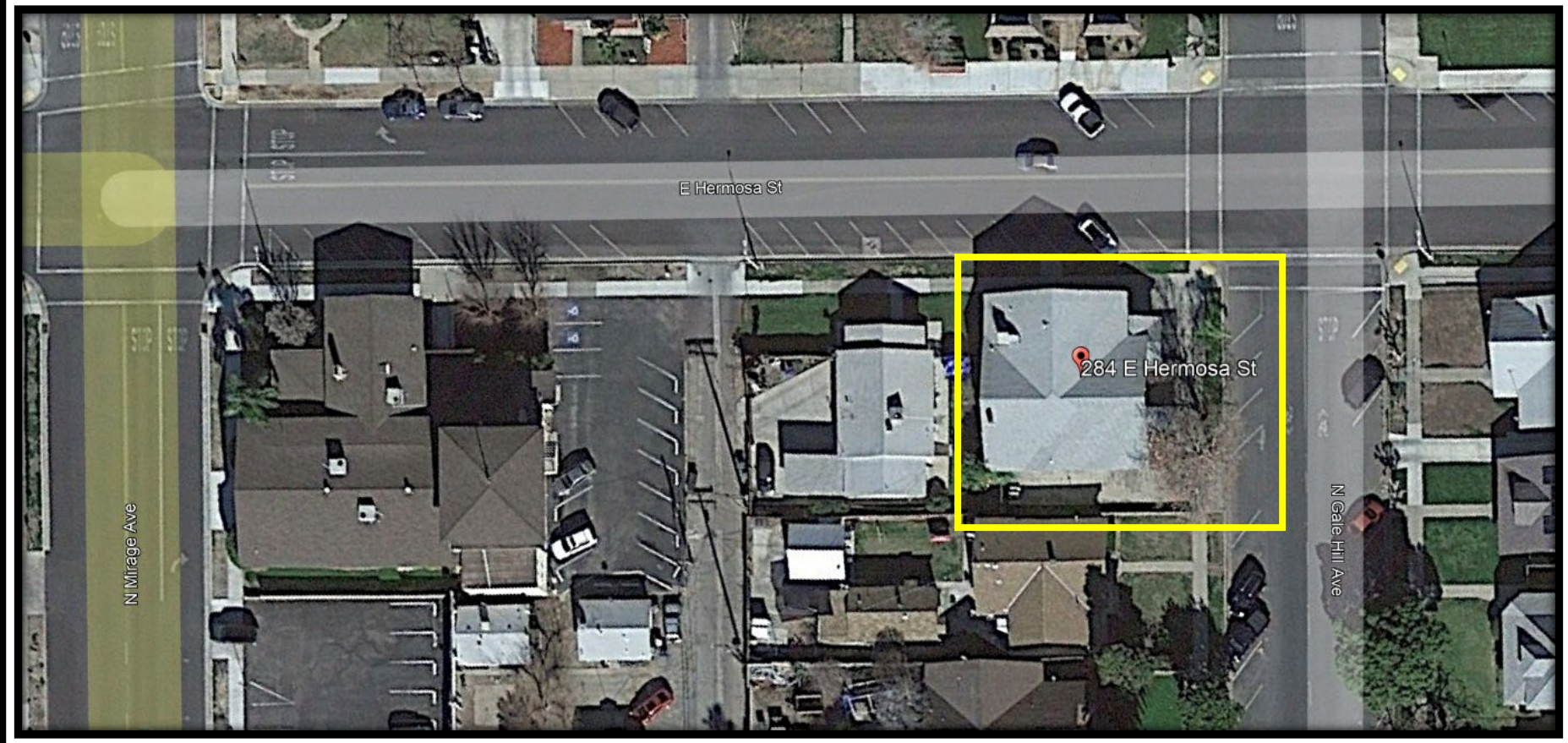
POR. TOWN OF LINDSAY, R.M. 2-91  
 POR. OFFICIAL MAP-CITY OF LINDSAY, R.M. 17-57  
 PARCEL MAP NO. 4527, P.M. 46-32  
 SWEET BRIER PLAZA, R.M. 39-63

MT. VERNON AVE. CITY OF LINDSAY  
 ASSESSOR'S MAPS BK. 205, PG. 282  
 COUNTY OF TULARE, CALIFORNIA, U.S.A.

NOTE: Assessor's Parcel Numbers Shown in Circles ① 123  
 Assessor's Block Numbers Shown in Ellipses (283)

2013-0080981	04/22/2014	ARP
REVISION	DATE	TECH

B. COMMUNITY FACILITY  
284 E. HERMOSA ST



**B. COMMUNITY FACILITY  
284 E. HERMOSA ST**

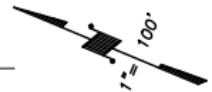
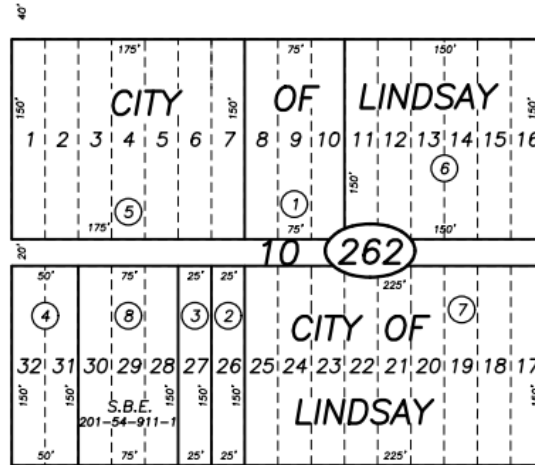
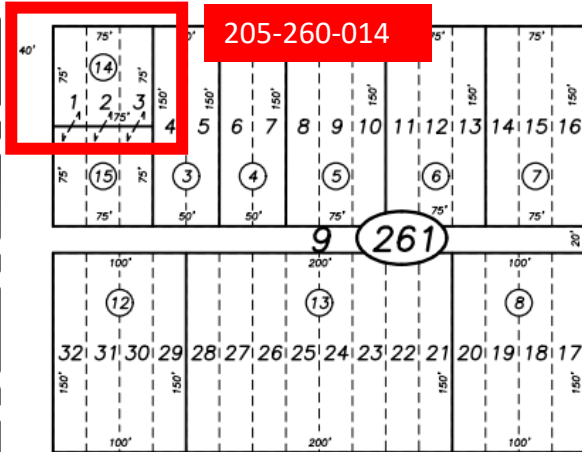
POR. SEC 7, T.20S., R.27E, M.D.B.&M

Tax Area Codes 205-26

003-018

24

GAIL HILL AVE.



BASIS OF BEARINGS:  
P.M. 46-32

25

MIRAGE AVE.

80'

23