

CITY OF LINDSAY

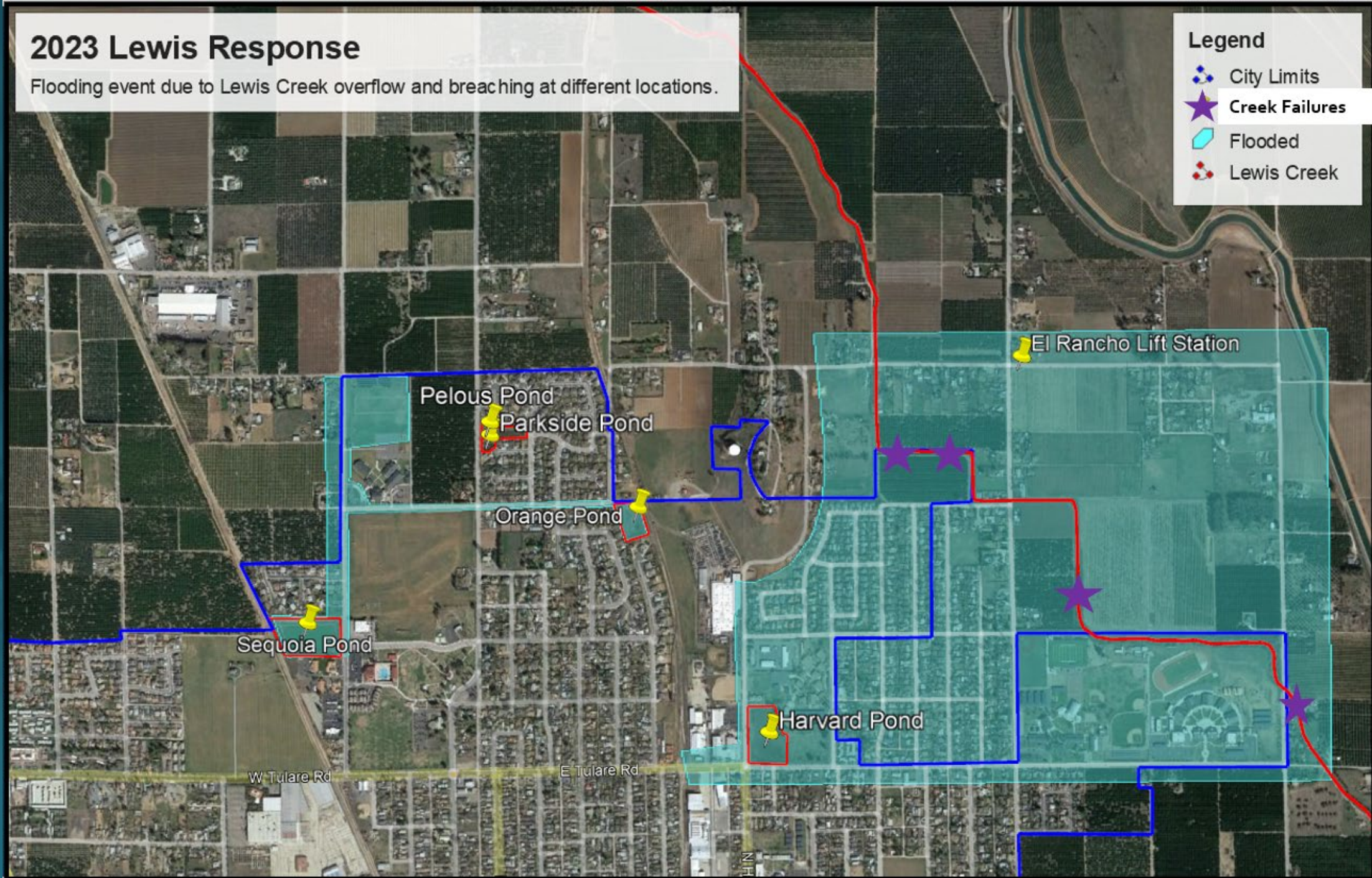
2023 LEWIS RESPONSE

2023 Lewis Response

Flooding event due to Lewis Creek overflow and breaching at different locations.

Legend

- City Limits
- Creek Failures
- Flooded
- Lewis Creek



RESPONSE

Fix 3 Areas on Lewis
Creek



Built a Berm on Hickory



Sequoia Pond
5 Emergency pumps
run 24 hrs



RESPONSE

- 5 ROLL OFF FROM MIDVALLEY FOR 2 WEEKS
- HIRED 10 USA STAFFING FOR CLEANUP



RESPONSE-CLEANUP EFFORTS

PRIORITY 1

- Finish reading water meters

PRIORITY 2

- Potholing

PRIORITY 3

- Clean Sierra View Estates
- Flooding areas
- Monitor & Clean debris from Lewis Creek

PRIORITY 4

- Sandbag Station

PRIORITY 5

- Weed Control
- Mow Soccer Park & City Park (Next week)

RESPONSE

Araceli Mejia, Assistant
Planner

559-562-7102 ext 8035



Property Damage Report Form

Has your property been damaged by the recent March 2023 storms?

Report your damages on [Tulare County's Property Damage Form](#) available online, [click here](#). Anyone in need of assistance completing the Property Damage Form can call the Tulare County Flood Hotline at (559) 802-9791 between 8 am – 8 pm.

A screenshot of the City of Lindsay website's "Flood Resources" page. The page header includes the City of Lindsay logo and name, and the word "Government". The main content area features a house icon in water, a heading "Flood Resources", and a paragraph explaining the page's purpose. A dark blue bar highlights the "Sandbags" section, which contains text about sandbag distribution locations and a link for more information.

Flood Resources

This page is intended to provide a list of resources that are available to those affected by the recent floods.

Sandbags

Available for Lindsay residents in the parking lot behind City Hall at 251 E. Honolulu St. Lindsay, CA 93247. There is a maximum of 10 bags allowed per vehicle. For those within the County of Tulare's jurisdiction, information on sandbag distribution locations can be found by clicking this link.

SANDBAG STATION





- 485 Tons of Sand ordered
- 26,000 sandbags distributed
- 6,000 bags on stand-by



2023 Lewis Response

Flooding event due to Lewis Creek overflow and breaching at different locations.

Legend

-  City Limits
-  Creek Failures
-  Flooded
-  Lewis Creek

