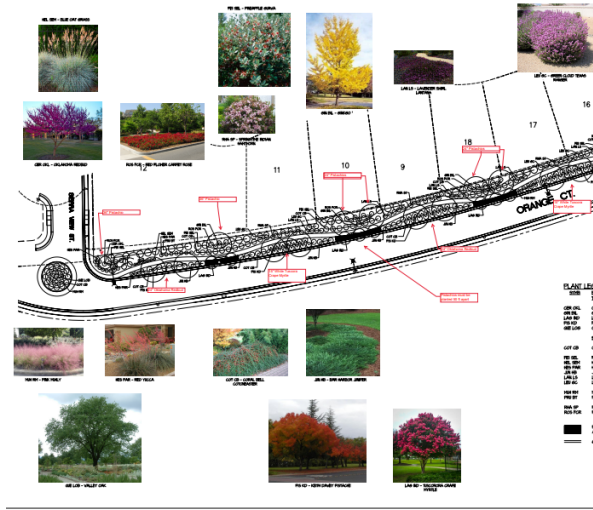


SIERRA VISTA TRAIL IMPROVEMENT PROJECT



WHY ARE WE HERE AGAIN?...

We cannot change the past

&

We understand the frustration



WHAT IS A LANDSCAPE & LIGHTING DISTRICT?

A tool used by local government agencies to pay for landscaping, lighting and other improvement and services in public areas.

“Special Benefit” means a particular and distinct benefit over and above general benefits conferred on real property located in the district or to the public at large.



YEARLY COSTS & LONG-TERM MAINTENANCE

Minimum costs \$251.33 per year per house (\$20.94 per month)

- Drainage pond
- Weed abatement
- Utilities



DISSOLVE THE DISTRICT

- Would not recommend
- Take away from needed public services in other areas such as Recreation, Parks, Police & Fire
- Commitment



OPTION #1-LANDSCAPING

Decomposed Granite
Gray or Gold



Chinese Pistachio

Oklahoma Redbud

White Tuscarora Crape Myrtle

3 variety of trees



Circle







OPTION #1-LANDSCAPING

Gold Option \$55,147

Sources of Funds

Fund Balance	\$38,674
City	\$16,473

Grey Option \$51,947

Sources of Funds

Available District Fund Balance	\$38,674
City	\$13,273.18



YEARLY ASSESSMENT COST FOR OPTION 1

- \$352.24 per year per house (\$29.35 per month)
- Includes
 - Weed abatement
 - Landscaping services
 - All utilities
 - Drainage pond maintenance



OPTION #2- LEAVE AS IS



Assessment Cost: \$251.33 per year per house (\$20.94 per month)



STAFF'S RECOMMENDATION

Option #1

- Continue the District and install landscaping

Why?

- Neighborhood amenity
- Quality of life
- Increase/Maintain property values in the neighborhood
- Take away from needed public services in other areas such as Recreation, Parks, Police & Fire

