



Tentative Parcel Map 22-02
Palm Terrace II & III

Zoning

- RM-3 Multifamily Residential
- Minimum Lot Size: 5,000 sq ft
- Density: 3,000 sq ft/unit



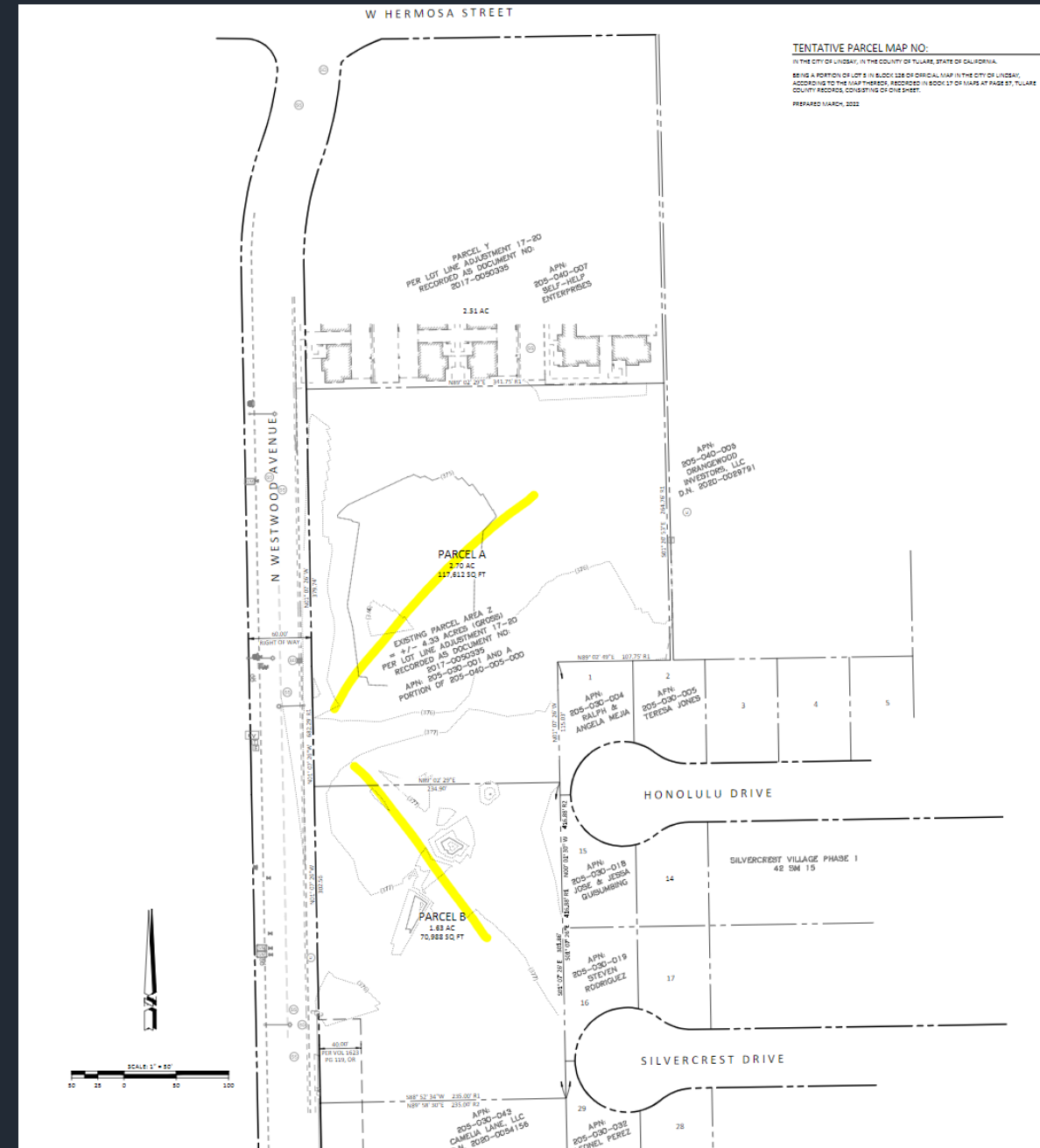
Proposed Use

Palm Terrace II (Under Construction)

- 2.7 acres
- 54 affordable multifamily units

Palm Terrace III (Future Development)

- 1.63 acres
- 10 affordable single-family dwellings





Questions?