



LINDSAY CITY COUNCIL REGULAR MEETING AGENDA

City Hall, 251 E. Honolulu St., Lindsay, CA 93247

Notice is hereby given that the Lindsay City Council will hold a Regular Meeting on April 13, 2021 in person and via webinar. The webinar address for members of the public is https://www.bigmarker.com/griswold_lasalle/April-13-2021-Lindsay-Council-Meeting.

Persons with disabilities who may need assistance should contact the City Clerk at least 24 hours prior to the meeting at (559) 562-7102 ext. 8011 or via email at lindsay.cityclerk@lindsay.ca.us.

- 1. CALL TO ORDER**
- 2. ROLL CALL**
- 3. PLEDGE**

Led by Council Member CERROS.

4. PUBLIC COMMENT

The public is invited to comment on any subject under the jurisdiction of the Lindsay City Council. Please note that speakers that wish to comment on a Regular Item or Public Hearing on tonight's agenda will have an opportunity to speak when public comment for that item is requested by the Mayor.

Comments shall be limited to three (3) minutes per person, with thirty (30) minutes for the total comment period, unless otherwise indicated by the Mayor.

The public may also choose to submit a comment before the meeting via email. Public comments received via email will be distributed to the Council prior to the start of the meeting and incorporated into the official minutes; however, they will not be read aloud.

- 5. COUNCIL REPORT**
- 6. CITY MANAGER REPORT**
- 7. LINDSAY HIGH SCHOOL STUDENT REPORT**

Presented by Leonardo Andrade, ASB City Council Representative

8. RECOGNITION ITEMS

- 8.1 Proclamation for the 89th Annual Lindsay Orange Blossom Festival (p. 1)
- 8.2 Proclamation for the 89th Annual Lindsay Orange Blossom Festival Queen and her Court (p. 2)

8.3 April 2021 Work Anniversaries

Chief Chris Hughes (Public Safety) – 21 Years with the City of Lindsay on April 3rd

Officer Sylvia Rocha (Public Safety) – 10 Years with the City of Lindsay on April 3rd

9. CONSENT CALENDAR

Routine items approved in one motion unless item is pulled for discussion.

9.1 Minutes from March 23, 2021 City Council Regular Meeting (pp. 3-6)

9.2 Warrant List for March 18, 2021 through April 6, 2021 (pp. 7-13)

9.3 Treasurer’s Report for March 2021 (p. 14)

9.4 Consider Approval of Task Order to Keller and Wegley Consulting Engineers for Nitrate Control Program and Salt Control Program Compliance Requirements (pp. 15-32)

9.5 Consider Approval of Resolution 21-08, Authorizing Staff to Submit a Claim to TCAG for Local Transportation Funds for FY 20-2021 (pp. 33-38)

9.6 Consider Authorization to Bid 2020-2021 Sewer Enterprise Fund Capital Improvement Projects (p. 39)

10. ACTION ITEMS

10.1 Consider Approval of Resolution 21-10, Requiring Development Approval for all Development Projects within the City of Lindsay to be Subject to the Condition that Necessary Municipal Services be Funded by Utilization of a Community Facilities District or other Funding Mechanism (pp. 40-48)

Presented by Joseph M. Tanner, City Manager

10.2 Consider Approval for Speed Enforcement Expenditures (pp. 49-50)

Presented by Lt. Nicholas Nave, Public Safety

11. PUBLIC HEARINGS

11.1 Consider Approval of Resolution 21-09, Approving Conditional Use Permit No. 20-07, A Request by Chester Lew to Remodel an Existing Two-Story Building (pp. 51-59)

Presented by Kira Noguera, City Planner

12. EXECUTIVE (CLOSED) SESSION

12.1 Public Employee Performance Evaluation – City Manager

Evaluation of Performance of Public Employee Pursuant to Cal Gov. Code § 54957(b)(1)

13. REQUEST FOR FUTURE ITEMS

14. ADJOURNMENT

Lindsay City Council meetings are held in the City Council Chambers at 251 E. Honolulu Street in Lindsay, California beginning at 6:00 P.M. on the second and fourth Tuesday of every month unless otherwise noticed. Materials related to an Agenda item submitted to the legislative body after distribution of the Agenda Packet are available for public inspection in the office of the City Clerk during normal business hours. Complete agenda is available at www.lindsay.ca.us. In compliance with the Americans with Disabilities Act & Ralph M. Brown Act, if you need special assistance to participate in this meeting, or to be able to access this agenda and documents in the agenda packet, please contact the office of the Deputy City Clerk at (559) 562-7102 x 8025. Notification 48 hours prior to the meeting will enable the City to ensure accessibility to this meeting and/or provision of an alternative format of the agenda and documents in the agenda packet.



Proclamation

WHEREAS, the Orange Blossom Festival is an annual celebration that honors the citrus industry in our community and one of the City of Lindsay's longest running traditions; and

WHEREAS, in the year 2021, the City of Lindsay will mark its 89th anniversary of this special celebration;

NOW, THEREFORE, BE IT RESOLVED, that I, Ramona Caudillo, Mayor of the City of Lindsay, along with members of the Lindsay City Council, do hereby proclaim

Saturday, April 17th, 2021

the

89th Annual Lindsay Orange Blossom Festival

IN WITNESS WHEREOF, I have hereunto set my hand and caused the Seal of the City of Lindsay to be affixed this 13th day of April, 2021.

Lindsay City Council

Ramona Caudillo, Mayor



Proclamation

WHEREAS, the Orange Blossom Festival affords the citizens of Lindsay a special opportunity to recognize and honor the Queen and her Court, chosen to preside over this joyous celebration of community; and

WHEREAS, academic achievement, civic and community service, and self-determination are paramount among the values considered in the selection of the Royal Party;

NOW, THEREFORE, BE IT RESOLVED, that I, Ramona Caudillo, Mayor of the City of Lindsay, along with members of the Lindsay City Council, invite all to join us in honoring the

89th Annual Lindsay Orange Blossom Festival Queen

Jimena Meza

and her Court

Briana Hernandez

Fatima Lemus-Ibarra

Alexis Leon

Isabelle Sanchez

IN WITNESS WHEREOF, I have hereunto set my hand and caused the Seal of the City of Lindsay to be affixed this 13th day of April, 2021.

Lindsay City Council

Ramona Caudillo, Mayor



**LINDSAY CITY COUNCIL
REGULAR MEETING AGENDA
MINUTES**

City Hall, 251 E. Honolulu St., Lindsay, CA 93247

Notice is hereby given that the Lindsay City Council will hold a Regular Meeting on March 23, 2021 in person and via webinar. The webinar address for members of the public is

https://www.bigmarker.com/griswold_lasalle/March-23-2021-Lindsay-Council-Meeting.

Persons with disabilities who may need assistance should contact the City Clerk at least 24 hours prior to the meeting at (559) 562-7102 ext. 8011 or via email at lindsay.cityclerk@lindsay.ca.us.

1. CALL TO ORDER

2. ROLL CALL

Present	Council Member SERNA Mayor Pro Tem FLORES Mayor CAUDILLO Council Member CERROS Council Member SANCHEZ
Absent with Notice	N/A
Absent	N/A

3. PLEDGE

Led by Mayor CAUDILLO.

4. PUBLIC COMMENT

- Trudy Wischemann provided a public comment via email which was distributed to Council and summarized by the City Clerk in the meeting. The comment included the following: traffic concerns at the Homassel/Hermosa roundabout; the need for good truck routes that are clearly marked; the hope that the City would not install more roundabouts in the future.
- Robin Perna provided a comment on behalf of the Lindsay Chamber of Commerce requesting that the City Council review the Friday Night Market contract with Jimora Enterprises. The comment included: concerns that Jimora Enterprises had not been acting good faith with local vendors; insufficient sanitation supplies and procedures; improper clean up.
- Mercy Herrera provided a comment regarding the Friday Night Market contract with Jimora Enterprises. The comment included: concerns that the agreement was not properly reviewed;

concerns that Lindsay residents were not given priority; mismanagement of the Friday Night Market. Mercy Herrera provided further comment regarding poor road conditions at Linda Vista St, Lindmore St, and Harvard Ave.

5. COUNCIL REPORT

- Mayor CAUDILLO reported regarding a commissioner skills course she will be taking and invited Council to join if interested.

6. CITY MANAGER REPORT

- Tulare County is now in the red tier of the state’s COVID-19 system. The next, less restrictive step is the orange tier which would allow business to expand occupancy and indoor operations.
- The Wellness Center is currently in a “soft opening” phase that allows for 10% occupancy and proper social distancing. Outdoor classes are continuing in that mode of operation.
- There is a scheduled meeting with the Friday Night Market operators regarding a tentative opening on April 9th.
- Internal meetings to discuss the City budget are ongoing; a workshop for City Council can be arranged if that is of interest.

7. RECOGNITION ITEMS

7.1 Proclamation Acknowledging the 1 Year Anniversary of the COVID-19 Pandemic with an Observed Moment of Silence (p. 1)

7.2 March 2021 Work Anniversaries

Bruce Fox (Public Safety) – 1 Year with the City of Lindsay on March 30th

8. CONSENT CALENDAR

Routine items approved in one motion unless item is pulled for discussion.

8.1 Minutes from March 9, 2021 City Council Regular Meeting (pp. 2-7)

8.2 Warrant List for March 3, 2021 through March 17, 2021 (pp. 8-13)

8.3 Renewal of **Resolution 20-12**, Declaring a Local Emergency and Request for Assistance Under the California Disaster Assistance Act (pp. 14-16)

8.4 Minute Order Approval of Exhibit A, Scope of Work for SB2 Planning Grant and Exhibit B, Scope of Work for Local Early Action Plan (LEAP) Planning Grant (pp. 17-22)

Motion to Approve Consent Calendar							
1 st	2 nd	Result	SERNA	FLORES	CAUDILLO	CERROS	SANCHEZ
FLORES	CERROS	(5-0) Approved	Aye	Aye	Aye	Aye	Aye

9. ACTION ITEMS

9.1 Authorization to Release Request for Proposals (RFP) for West Hermosa Street Corridor and Neighborhood Enhancement Plan for Technical Engineering Consulting (pp. 23-24)

Presented by Michael Camarena, Director of City Services and Planning

- Mayor Pro Tem FLORES inquired about the estimated time for completion. Director CAMARENA answered that the City has until 2023 to complete the study; because the official transit stop for the hub of Tulare County has been Lindsay, and that hub is currently a parking lot in a shopping center, the study will look at converting the planned transit center into that hub for Tulare County.
- Council Member Serna asked if the empty area in question would just be a bus stop area. Director CAMARENA answered that it would be a bus stop, but the City would hope to create some additional retail opportunities in the area as well.
- Mayor Pro Tem FLORES inquired about the timeline from study completion to actual ground being broke. Director CAMARENA answered that for the transit center, a first order of business will be to clear the current packing houses on Mt. Vernon and Hermosa St., and then bring in a consulting team. With the study in hand, depending on how the study identifies the connections, the City might be able to use Measure R funds for improvements. Timewise it is up to what the study finds and what the study estimates as a target project; an estimate would be 2024-25.
- Mayor CAUDILLO asked whether the City verified that contractors are properly insured. Director CAMARENA responded that yes, that was part of the contract process.
- Council Member CERROS asked about opportunity for the public to participate and voice their opinions. Director CAMARENA answered that a public participation component would span between 6-12 months.

Motion to Grant Authorization per Item 9.1							
1 st	2 nd	Result	SERNA	FLORES	CAUDILLO	CERROS	SANCHEZ
CAUDILLO	SERNA	(5-0) Approved	Aye	Aye	Aye	Nay	Nay

9.2 Approval of **Resolution 21-07**, Authorizing Application to the State of California Water Recycling Funding Program (WRFP) (pp. 25-28)

Presented by Michael Camarena, Director of City Services and Planning

Motion to Approve Resolution 21-07

1 st	2 nd	Result	SERNA	FLORES	CAUDILLO	CERROS	SANCHEZ
FLORES	SANCHEZ	(5-0) Approved	Aye	Aye	Aye	Aye	Aye

- Council Member SERNA inquired about the possibility of secondary “treated” water being sold back for agricultural purposes. Director CAMARENA answered that was a potential use and the City was looking into opportunities to create a commodity to offset groundwater pumping and create credits.

10. REQUEST FOR FUTURE ITEMS

- Council Member CERROS wanted to address the public comments regarding the Friday Night Market contract and requested the City Clerk to provide the existing contract with Jimora Enterprises via email.

11. ADJOURNMENT

Lindsay City Council meetings are held in the City Council Chambers at 251 E. Honolulu Street in Lindsay, California beginning at 6:00 P.M. on the second and fourth Tuesday of every month unless otherwise noticed. Materials related to an Agenda item submitted to the legislative body after distribution of the Agenda Packet are available for public inspection in the office of the City Clerk during normal business hours. Complete agenda is available at www.lindsay.ca.us. In compliance with the Americans with Disabilities Act & Ralph M. Brown Act, if you need special assistance to participate in this meeting, or to be able to access this agenda and documents in the agenda packet, please contact the office of the Deputy City Clerk at (559) 562-7102 x 8025. Notification 48 hours prior to the meeting will enable the City to ensure accessibility to this meeting and/or provision of an alternative format of the agenda and documents in the agenda packet.

Check#	Fund	Date	Vendor #	Vendor Name	Description	Amount
TOTAL						\$ 509,147.34
18494						316.61
	101 - GENERAL FUND	03/19/21	6591	ADVANCED EQUIPMENT	CUSHMAN -PETAL REPA	316.61
18495						282.00
	101 - GENERAL FUND	03/19/21	6504	ADVENTIST HEALTH TO	LAB FEES JAN	282.00
18496						117.21
	101 - GENERAL FUND	03/19/21	400	AGRI-HOME	SERVICE UNIT	117.21
18497						107.80
	101 - GENERAL FUND	03/19/21	010	ALL CREATURES PET C	ANIMAL CONTROL CHAR	107.80
18498						808.20
	101 - GENERAL FUND	03/19/21	6600	AMERICAN HERITAGE L	ACCIDENT PLAN	808.20
18499						65.85
	101 - GENERAL FUND	03/19/21	5457	AUTO ZONE COMMERCIA	BULBS	2.82
	552 - WATER	03/19/21	5457	AUTO ZONE COMMERCIA	MOTOR OIL	63.03
18500						18,903.50
	101 - GENERAL FUND	03/19/21	6179	BADAWI & ASSOCIATES	FY2020 AUDIT	18,903.50
18501						128.88
	101 - GENERAL FUND	03/19/21	3232	BIG BEN'S	1 DOOR	50.00
	101 - GENERAL FUND	03/19/21	3232	BIG BEN'S	MOULDING,CASING 3'	39.44
	101 - GENERAL FUND	03/19/21	3232	BIG BEN'S	MOULDING	39.44
18502						3,956.00
	552 - WATER	03/19/21	051	BSK	MONTHLY TESTING	3,956.00
18503						165.16
	101 - GENERAL FUND	03/19/21	3056	CALIFORNIA TURF EQU	LANDSCAPETRUCK REPA	165.16
18504						79,240.00
	101 - GENERAL FUND	03/19/21	075	CSJVRMA	LIABILITY PROGRAM	1,050.00
	101 - GENERAL FUND	03/19/21	075	CSJVRMA	LIABILITY PROGRAM	4,500.00
	101 - GENERAL FUND	03/19/21	075	CSJVRMA	LIABILITY PROGRAM	5,356.80
	101 - GENERAL FUND	03/19/21	075	CSJVRMA	WORKERS COMP PROGRA	51,237.00
	261 - GAS TAX FUND	03/19/21	075	CSJVRMA	LIABILITY PROGRAM	2,155.00
	400 - WELLNESS CENTER	03/19/21	075	CSJVRMA	LIABILITY PROGRAM	3,800.40
	552 - WATER	03/19/21	075	CSJVRMA	LIABILITY PROGRAM	3,800.40
	553 - SEWER	03/19/21	075	CSJVRMA	LIABILITY PROGRAM	3,800.40
	554 - REFUSE	03/19/21	075	CSJVRMA	LIABILITY PROGRAM	3,540.00
18505						618.60
	101 - GENERAL FUND	03/19/21	076	CENTRAL VALLEY BUSI	INSPECTED FORM	158.94
	101 - GENERAL FUND	03/19/21	076	CENTRAL VALLEY BUSI	STOP WORK TAG	213.32
	101 - GENERAL FUND	03/19/21	076	CENTRAL VALLEY BUSI	BUSINESS LIC CERT	246.34
18506						3,500.00
	261 - GAS TAX FUND	03/19/21	1702	CENTRAL VALLEY SWEE	SWEEPING SERVICE FE	3,500.00
18508						3,709.04
	101 - GENERAL FUND	03/19/21	5832	CINTAS CORPORATION	OPERATING SUPPLIES	30.15
	101 - GENERAL FUND	03/19/21	5832	CINTAS CORPORATION	OPERATING SUPPLIES	30.15
	101 - GENERAL FUND	03/19/21	5832	CINTAS CORPORATION	OPERATING SUPPLIES	30.15
	101 - GENERAL FUND	03/19/21	5832	CINTAS CORPORATION	OPERATING SUPPLIES	30.38
	101 - GENERAL FUND	03/19/21	5832	CINTAS CORPORATION	OPERATING SUPPLIES	30.38
	101 - GENERAL FUND	03/19/21	5832	CINTAS CORPORATION	OPERATING SUPPLIES	30.38
	101 - GENERAL FUND	03/19/21	5832	CINTAS CORPORATION	OPERATING SUPPLIES	31.28
	101 - GENERAL FUND	03/19/21	5832	CINTAS CORPORATION	OPERATING SUPPLIES	31.28
	101 - GENERAL FUND	03/19/21	5832	CINTAS CORPORATION	OPERATING SUPPLIES	31.28
	101 - GENERAL FUND	03/19/21	5832	CINTAS CORPORATION	OPERATING SUPPLIES	55.93
	101 - GENERAL FUND	03/19/21	5832	CINTAS CORPORATION	OPERATING SUPPLIES	55.93
	101 - GENERAL FUND	03/19/21	5832	CINTAS CORPORATION	OPERATING SUPPLIES	55.93
	305 - COVID-19 EMERGENCY FUND	03/19/21	5832	CINTAS CORPORATION	ULTRACLEAN	891.60
	305 - COVID-19 EMERGENCY FUND	03/19/21	5832	CINTAS CORPORATION	ULTRACLEAN	891.60
	305 - COVID-19 EMERGENCY FUND	03/19/21	5832	CINTAS CORPORATION	ULTRACLEAN	891.60
	552 - WATER	03/19/21	5832	CINTAS CORPORATION	OPERATING SUPPLIES	30.15

	552 - WATER	03/19/21	5832	CINTAS CORPORATION	OPERATING SUPPLIES	30.38
	552 - WATER	03/19/21	5832	CINTAS CORPORATION	OPERATING SUPPLIES	31.28
	552 - WATER	03/19/21	5832	CINTAS CORPORATION	OPERATING SUPPLIES	55.93
	553 - SEWER	03/19/21	5832	CINTAS CORPORATION	OPERATING SUPPLIES	30.15
	553 - SEWER	03/19/21	5832	CINTAS CORPORATION	OPERATING SUPPLIES	30.38
	553 - SEWER	03/19/21	5832	CINTAS CORPORATION	OPERATING SUPPLIES	31.28
	553 - SEWER	03/19/21	5832	CINTAS CORPORATION	OPERATING SUPPLIES	55.93
	554 - REFUSE	03/19/21	5832	CINTAS CORPORATION	OPERATING SUPPLIES	30.15
	554 - REFUSE	03/19/21	5832	CINTAS CORPORATION	OPERATING SUPPLIES	30.38
	554 - REFUSE	03/19/21	5832	CINTAS CORPORATION	OPERATING SUPPLIES	31.28
	554 - REFUSE	03/19/21	5832	CINTAS CORPORATION	OPERATING SUPPLIES	55.93
	556 - VITA-PAKT	03/19/21	5832	CINTAS CORPORATION	OPERATING SUPPLIES	30.18
	556 - VITA-PAKT	03/19/21	5832	CINTAS CORPORATION	OPERATING SUPPLIES	30.38
	556 - VITA-PAKT	03/19/21	5832	CINTAS CORPORATION	OPERATING SUPPLIES	31.32
	556 - VITA-PAKT	03/19/21	5832	CINTAS CORPORATION	OPERATING SUPPLIES	55.92
18509						843.00
	101 - GENERAL FUND	03/19/21	279	CITY OF PORTERVILLE	01-000680ANIMAL JAN	169.00
	553 - SEWER	03/19/21	279	CITY OF PORTERVILLE	30-016544 LAB 1/202	674.00
18510						4,565.33
	400 - WELLNESS CENTER	03/19/21	6090	CLEAN CUT LANDSCAPE	LANDSCAPE WELLNESS	860.00
	400 - WELLNESS CENTER	03/19/21	6090	CLEAN CUT LANDSCAPE	LANDSCAPE-WELLNESS	860.00
	883 - SIERRA VIEW ASSESSMENT	03/19/21	6090	CLEAN CUT LANDSCAPE	SIERRA VIEW FEB	1,129.00
	884 - HERITAGE ASSESSMENT DIST	03/19/21	6090	CLEAN CUT LANDSCAPE	HERITAGE PARK FEB	274.00
	886 - SAMOA	03/19/21	6090	CLEAN CUT LANDSCAPE	HERMOSA	133.00
	887 - SWEETBRIER TOWNHOUSES	03/19/21	6090	CLEAN CUT LANDSCAPE	SWEETBRIER FEB	475.00
	888 - PARKSIDE	03/19/21	6090	CLEAN CUT LANDSCAPE	PARKSIDE ESTATES FE	197.00
	889 - SIERRA VISTA ASSESSMENT	03/19/21	6090	CLEAN CUT LANDSCAPE	SIERRA VISTA FEB	83.33
	890 - MAPLE VALLEY ASSESSMENT	03/19/21	6090	CLEAN CUT LANDSCAPE	MAPLE VALLEY FEB	45.00
	891 - PELOUS RANCH	03/19/21	6090	CLEAN CUT LANDSCAPE	PELOUS RANCH FEB	509.00
18511						17.87
	101 - GENERAL FUND	03/19/21	2258	CROUZET IRRIGATION	DRAIN DOWN SPOUT	17.87
18512						569.32
	101 - GENERAL FUND	03/19/21	102	CULLIGAN	185 N GALE HILL 2/2	26.00
	552 - WATER	03/19/21	102	CULLIGAN	18829 AVE 240 2/28	55.13
	552 - WATER	03/19/21	102	CULLIGAN	18869 AVE 240	173.02
	552 - WATER	03/19/21	102	CULLIGAN	18899 AVE 240	133.46
	552 - WATER	03/19/21	102	CULLIGAN	23965 RD188 2/28	0.50
	552 - WATER	03/19/21	102	CULLIGAN	24158 AVE 240 2/28	55.13
	552 - WATER	03/19/21	102	CULLIGAN	251 E HONOLULU	117.58
	553 - SEWER	03/19/21	102	CULLIGAN	23611 RD 196 2/28	8.50
18513						1,700.60
	552 - WATER	03/19/21	388	DENNIS KELLER/JAMES	DBP,TOC,WTP, TESTIN	430.10
	552 - WATER	03/19/21	388	DENNIS KELLER/JAMES	WELL NO15	1,238.00
	552 - WATER	03/19/21	388	DENNIS KELLER/JAMES	W14-PER	32.50
18514						79.00
	101 - GENERAL FUND	03/19/21	316	DEPT OF JUSTICE	LIVE SCAN	47.00
	400 - WELLNESS CENTER	03/19/21	316	DEPT OF JUSTICE	LIVE SCAN	32.00
18515						54,178.13
	781 - CAL HOME RLF	03/19/21	2540	DEPT.OF HOUSING & C	CALHOME 3/15	54,178.13
18516						1,027.53
	101 - GENERAL FUND	03/19/21	119	DOUG DELEO WELDING	2BOXES /100 POP RIV	31.15
	101 - GENERAL FUND	03/19/21	119	DOUG DELEO WELDING	GRIT FLAPPER	23.82
	552 - WATER	03/19/21	119	DOUG DELEO WELDING	12 HEX NUT, 12 CASP	81.95
	552 - WATER	03/19/21	119	DOUG DELEO WELDING	BALL VALVE	220.14
	552 - WATER	03/19/21	119	DOUG DELEO WELDING	BALL VALVE	99.27
	552 - WATER	03/19/21	119	DOUG DELEO WELDING	BRASS GATE VALVE	133.22
	552 - WATER	03/19/21	119	DOUG DELEO WELDING	TANK FLANGE,BALL VA	437.98

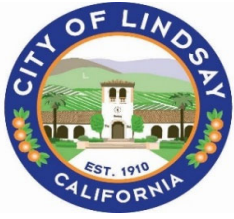
18517						925.00
	101 - GENERAL FUND	03/19/21	6614	ELITE RESTORATION B	WINDOWS-CLEANING	925.00
18518						13,370.00
	552 - WATER	03/19/21	6299	ERS INDUSTRIAL SERV	ANTHRACITE	13,370.00
18519						3,801.90
	552 - WATER	03/19/21	3461	FERGUSON ENTERPRISE	ANG KEY VLV	992.32
	552 - WATER	03/19/21	3461	FERGUSON ENTERPRISE	WAFER BFV BARE STEM	2,809.58
18520						11,677.92
	552 - WATER	03/19/21	137	FRIANT WATER AUTHOR	BILLING FEB 2021	910.92
	552 - WATER	03/19/21	137	FRIANT WATER AUTHOR	FKC O &M MONTHLY AP	5,607.00
	552 - WATER	03/19/21	137	FRIANT WATER AUTHOR	RECAP BILLING JAN	1,680.56
	552 - WATER	03/19/21	137	FRIANT WATER AUTHOR	SLDMWA DEC BILLING	356.46
	552 - WATER	03/19/21	137	FRIANT WATER AUTHOR	WTY2020FEBADJ&2021M	3,122.98
18521						1,313.74
	101 - GENERAL FUND	03/19/21	6010	FRONTIER COMMUNICAT	0	30.46
	101 - GENERAL FUND	03/19/21	6010	FRONTIER COMMUNICAT	209-042-9309	1.99
	101 - GENERAL FUND	03/19/21	6010	FRONTIER COMMUNICAT	209-151-2650	23.13
	101 - GENERAL FUND	03/19/21	6010	FRONTIER COMMUNICAT	209-151-2650	23.13
	101 - GENERAL FUND	03/19/21	6010	FRONTIER COMMUNICAT	209-151-2652	46.25
	101 - GENERAL FUND	03/19/21	6010	FRONTIER COMMUNICAT	209-151-2656	46.25
	101 - GENERAL FUND	03/19/21	6010	FRONTIER COMMUNICAT	209-151-2656	61.16
	101 - GENERAL FUND	03/19/21	6010	FRONTIER COMMUNICAT	562-2512	141.21
	552 - WATER	03/19/21	6010	FRONTIER COMMUNICAT	209-150-2936	84.17
	552 - WATER	03/19/21	6010	FRONTIER COMMUNICAT	209-151-2650	23.13
	552 - WATER	03/19/21	6010	FRONTIER COMMUNICAT	562-1552	101.49
	552 - WATER	03/19/21	6010	FRONTIER COMMUNICAT	562-7131	139.31
	553 - SEWER	03/19/21	6010	FRONTIER COMMUNICAT	209-150-3621	119.86
	553 - SEWER	03/19/21	6010	FRONTIER COMMUNICAT	209-151-2650	23.13
	553 - SEWER	03/19/21	6010	FRONTIER COMMUNICAT	209-151-2654	46.25
	553 - SEWER	03/19/21	6010	FRONTIER COMMUNICAT	209-151-2655	46.24
	553 - SEWER	03/19/21	6010	FRONTIER COMMUNICAT	559-562-6317	83.79
	553 - SEWER	03/19/21	6010	FRONTIER COMMUNICAT	562-7132	272.79
18522						3,024.25
	101 - GENERAL FUND	03/19/21	5647	GRISWOLD,LASSALLE,C	MATTER: ARTURO RUIZ	778.75
	101 - GENERAL FUND	03/19/21	5647	GRISWOLD,LASSALLE,C	MATTER: CITY CLERK	59.00
	101 - GENERAL FUND	03/19/21	5647	GRISWOLD,LASSALLE,C	MATTER: CITY SERVIC	66.00
	101 - GENERAL FUND	03/19/21	5647	GRISWOLD,LASSALLE,C	MATTER: FINANCE	287.50
	101 - GENERAL FUND	03/19/21	5647	GRISWOLD,LASSALLE,C	MATTER:CITY COUNCIL	1,725.00
	101 - GENERAL FUND	03/19/21	5647	GRISWOLD,LASSALLE,C	MATTER:CITY MANAGER	25.00
	101 - GENERAL FUND	03/19/21	5647	GRISWOLD,LASSALLE,C	MATTER:LABOR RELATI	83.00
18523						1,990.00
	101 - GENERAL FUND	03/19/21	6613	HEAVEN'S BEST CARPE	CARPET CLEANING	1,030.00
	101 - GENERAL FUND	03/19/21	6613	HEAVEN'S BEST CARPE	CARPET CLEANING-EXT	960.00
18524						483.90
	101 - GENERAL FUND	03/19/21	1391	HOME DEPOT	4.8 PURE WHITE PAIN	113.18
	101 - GENERAL FUND	03/19/21	1391	HOME DEPOT	BLINDS,SHELF BRACKE	196.18
	101 - GENERAL FUND	03/19/21	1391	HOME DEPOT	SHELF BRACKET	174.54
18525						300.00
	101 - GENERAL FUND	03/19/21	6346	JEFF PFEIFFER	SQUIRREL TREATMENT	300.00
18526						50.00
	101 - GENERAL FUND	03/19/21	2601	JOHN HIBLER WEATHER	WEATHER SERV JAN202	50.00
18527						12.67
	552 - WATER	03/19/21	6612	LEONARDA NAVARRO	705 HOMASSEL REFUND	12.67
18528						3,611.83
	101 - GENERAL FUND	03/19/21	4067	LINCOLN NAT'L INSUR	DENTAL PLAN-APRIL	2,666.21
	101 - GENERAL FUND	03/19/21	4067	LINCOLN NAT'L INSUR	LIFE INSURANCE MARC	945.62
18529						700.00
	552 - WATER	03/19/21	6425	LINDSAY TIRE & AUTO	LIC1456093 TIRES	700.00

18530						1,120.23
	101 - GENERAL FUND	03/19/21	1422	LINDSAY TRUE VALUE	C.S 1/31/2021	299.82
	101 - GENERAL FUND	03/19/21	1422	LINDSAY TRUE VALUE	C.S 1/31/2021	38.57
	101 - GENERAL FUND	03/19/21	1422	LINDSAY TRUE VALUE	C.S 1/31/2021	31.07
	101 - GENERAL FUND	03/19/21	1422	LINDSAY TRUE VALUE	C.S 1/31/2021	40.37
	400 - WELLNESS CENTER	03/19/21	1422	LINDSAY TRUE VALUE	WELLNESS 1/31/21	56.70
	552 - WATER	03/19/21	1422	LINDSAY TRUE VALUE	C.S 1/31/2021	409.34
	553 - SEWER	03/19/21	1422	LINDSAY TRUE VALUE	C.S 1/31/2021	244.36
18531						2,024.65
	101 - GENERAL FUND	03/19/21	1422	LINDSAY TRUE VALUE	2/28/21 C.S	148.06
	101 - GENERAL FUND	03/19/21	1422	LINDSAY TRUE VALUE	2/28/21 C.S	20.64
	101 - GENERAL FUND	03/19/21	1422	LINDSAY TRUE VALUE	2/28/21 C.S	214.89
	101 - GENERAL FUND	03/19/21	1422	LINDSAY TRUE VALUE	2/28/21 C.S	246.43
	101 - GENERAL FUND	03/19/21	1422	LINDSAY TRUE VALUE	P.S 2/28/21	17.39
	101 - GENERAL FUND	03/19/21	1422	LINDSAY TRUE VALUE	FC	30.81
	101 - GENERAL FUND	03/19/21	1422	LINDSAY TRUE VALUE	2/28/21 C.S	485.98
	400 - WELLNESS CENTER	03/19/21	1422	LINDSAY TRUE VALUE	WELLNESS 2/28/21	52.17
	552 - WATER	03/19/21	1422	LINDSAY TRUE VALUE	2/28/21 C.S	676.81
	553 - SEWER	03/19/21	1422	LINDSAY TRUE VALUE	2/28/21 C.S	131.47
18532						98.10
	101 - GENERAL FUND	03/19/21	5424	LINDSAY VETERINARY	ANIMAL CONTROL CHAR	98.10
18533						150.00
	553 - SEWER	03/19/21	6550	MARIO SAGREDO ELECT	HICKORY LIFT PUMP M	150.00
18534						198.95
	101 - GENERAL FUND	03/19/21	234	MARTIN'S TIRE & AUT	TIRES	198.95
18535						-
	552 - WATER	03/19/21	6423	MCCROMETER	METER REPAIR PROGRA	(1,808.54)
	552 - WATER	03/19/21	6423	MCCROMETER	METER REPAIR PROGRA	1,808.54
18536						626.89
	261 - GAS TAX FUND	03/19/21	509	MEDALLION SUPPLY	DOWNTOWN CITY BOLLA	626.89
18537						153,029.06
	554 - REFUSE	03/19/21	5852	MID VALLEY DISPOSAL	DEC 2020 REFUSE	75,476.13
	554 - REFUSE	03/19/21	5852	MID VALLEY DISPOSAL	JAN 2021 REFUSE	77,552.93
18538						9,450.00
	101 - GENERAL FUND	03/19/21	4815	MUNICIPAL CODE CORP	SUBSCRIPTION	9,450.00
18539						428.56
	101 - GENERAL FUND	03/19/21	5625	NGLIC-SUPERIOR VISI	8/1 VISION PLAN	428.56
18540						105.00
	101 - GENERAL FUND	03/19/21	4323	OASIS	MAR2021-MAY2021	105.00
18541						905.63
	101 - GENERAL FUND	03/19/21	276	PORTERVILLE RECORDE	AD # 00077847	125.57
	101 - GENERAL FUND	03/19/21	276	PORTERVILLE RECORDE	AD# 00077843	166.24
	101 - GENERAL FUND	03/19/21	276	PORTERVILLE RECORDE	AD#00077836	613.82
18542						6,625.25
	552 - WATER	03/19/21	4618	PROVOST & PRITCHARD	FINANCIAL ANALYSIS	2,962.63
	552 - WATER	03/19/21	4618	PROVOST & PRITCHARD	WATER AND SEWER RAT	209.00
	553 - SEWER	03/19/21	4618	PROVOST & PRITCHARD	FINANCIAL ANALYSIS	2,962.62
	553 - SEWER	03/19/21	4618	PROVOST & PRITCHARD	WATER AND SEWER RAT	209.00
	553 - SEWER	03/19/21	4618	PROVOST & PRITCHARD	POND MONITORING JAN	282.00
18543						5,902.30
	101 - GENERAL FUND	03/19/21	399	QUAD KNOFF,INC.	ENGINEERING 1/24-2/	365.00
	101 - GENERAL FUND	03/19/21	399	QUAD KNOFF,INC.	ENGINEERING12/27-1/	692.70
	101 - GENERAL FUND	03/19/21	399	QUAD KNOFF,INC.	PLANNING 1/24-2/20/	4,844.60
18544						2,395.44
	101 - GENERAL FUND	03/19/21	285	QUILL CORPORATION	128GB-USB 3PK	58.66
	101 - GENERAL FUND	03/19/21	285	QUILL CORPORATION	OFFICE SUPPLIES	185.88
	101 - GENERAL FUND	03/19/21	285	QUILL CORPORATION	OFFICE SUPPLIES	98.03
	101 - GENERAL FUND	03/19/21	285	QUILL CORPORATION	PINE SOL CLEANER	26.08
	101 - GENERAL FUND	03/19/21	285	QUILL CORPORATION	RULED PADS	16.52
	101 - GENERAL FUND	03/19/21	285	QUILL CORPORATION	2 MESH CHAIR	347.98
	101 - GENERAL FUND	03/19/21	285	QUILL CORPORATION	8 OUTLET PROTECTOR	46.91
	101 - GENERAL FUND	03/19/21	285	QUILL CORPORATION	HR SUPPLIES	233.78

	101 - GENERAL FUND	03/19/21	285	QUILL CORPORATION	HR SUPPLIES	241.97
	101 - GENERAL FUND	03/19/21	285	QUILL CORPORATION	HR SUPPLIES	82.35
	101 - GENERAL FUND	03/19/21	285	QUILL CORPORATION	OFFICE MAT	64.78
	101 - GENERAL FUND	03/19/21	285	QUILL CORPORATION	OFFICE MAT	68.96
	101 - GENERAL FUND	03/19/21	285	QUILL CORPORATION	US FLAG	33.43
	101 - GENERAL FUND	03/19/21	285	QUILL CORPORATION	WIRELESS KEYBOARD	27.06
	101 - GENERAL FUND	03/19/21	285	QUILL CORPORATION	COUNCIL CHAIRS	695.96
	305 - COVID-19 EMERGENCY FUND	03/19/21	285	QUILL CORPORATION	EXAM GLOVES	55.43
	305 - COVID-19 EMERGENCY FUND	03/19/21	285	QUILL CORPORATION	EXAM GLOVES	81.55
	305 - COVID-19 EMERGENCY FUND	03/19/21	285	QUILL CORPORATION	EXM GLOVE 100/BOX	19.90
	305 - COVID-19 EMERGENCY FUND	03/19/21	285	QUILL CORPORATION	GLOVES 100/BOX	10.21
18545						4,000.00
	552 - WATER	03/19/21	6095	RALPH GUTIERREZ WAT	C P O FEB 2021	2,000.00
	553 - SEWER	03/19/21	6095	RALPH GUTIERREZ WAT	C P O FEB 2021	2,000.00
18546						100.00
	101 - GENERAL FUND	03/19/21	6615	SHAUNDRE HERRERA	ARBOR DEPOSIT REFUN	100.00
18547						159.16
	101 - GENERAL FUND	03/19/21	5314	SHRED-IT USA LLC	SHRED SERVICE FEB	159.16
18548						173.88
	101 - GENERAL FUND	03/19/21	5624	SIERRA SANITATION,	RENTAL UNIT12/1-12/	173.88
18549						1,111.18
	553 - SEWER	03/19/21	307	SILVAS OIL COMPANY	BULK-DIESEL FUEL	1,111.18
18550						33,247.25
	101 - GENERAL FUND	03/19/21	310	SOUTHERN CA. EDISON	2-00-424-8134	1,082.24
	101 - GENERAL FUND	03/19/21	310	SOUTHERN CA. EDISON	2-00-424-8134	13.71
	101 - GENERAL FUND	03/19/21	310	SOUTHERN CA. EDISON	2-00-424-8134	55.64
	101 - GENERAL FUND	03/19/21	310	SOUTHERN CA. EDISON	2-00-424-8134	597.82
	101 - GENERAL FUND	03/19/21	310	SOUTHERN CA. EDISON	2-00-424-8134	880.60
	261 - GAS TAX FUND	03/19/21	310	SOUTHERN CA. EDISON	2-00-424-8134	5,879.84
	261 - GAS TAX FUND	03/19/21	310	SOUTHERN CA. EDISON	2-35-921-6264	34.90
	400 - WELLNESS CENTER	03/19/21	310	SOUTHERN CA. EDISON	3-031-5675-04	5,845.54
	552 - WATER	03/19/21	310	SOUTHERN CA. EDISON	2-00-424-8134	15,912.07
	553 - SEWER	03/19/21	310	SOUTHERN CA. EDISON	2-00-424-8134	368.40
	553 - SEWER	03/19/21	310	SOUTHERN CA. EDISON	3-001-1837-87	1,455.45
	553 - SEWER	03/19/21	310	SOUTHERN CA. EDISON	3-035-4725-72	25.17
	556 - VITA-PAKT	03/19/21	310	SOUTHERN CA. EDISON	2-00-424-8134	384.16
	883 - SIERRA VIEW ASSESSMENT	03/19/21	310	SOUTHERN CA. EDISON	2-00-424-8134	149.73
	884 - HERITAGE ASSESSMENT DIST	03/19/21	310	SOUTHERN CA. EDISON	2-00-424-8134	13.71
	886 - SAMOA	03/19/21	310	SOUTHERN CA. EDISON	2-00-424-8134	27.57
	887 - SWEETBRIER TOWNHOUSES	03/19/21	310	SOUTHERN CA. EDISON	2-00-424-8134	67.08
	888 - PARKSIDE	03/19/21	310	SOUTHERN CA. EDISON	2-00-424-8134	13.71
	889 - SIERRA VISTA ASSESSMENT	03/19/21	310	SOUTHERN CA. EDISON	2-00-424-8134	60.82
	890 - MAPLE VALLEY ASSESSMENT	03/19/21	310	SOUTHERN CA. EDISON	2-00-424-8134	105.78
	891 - PELOUS RANCH	03/19/21	310	SOUTHERN CA. EDISON	2-00-424-8134	233.29
	891 - PELOUS RANCH	03/19/21	310	SOUTHERN CA. EDISON	2-32-032-1755	26.74
	891 - PELOUS RANCH	03/19/21	310	SOUTHERN CA. EDISON	2-35-921-6264	13.28
18551						331.82
	400 - WELLNESS CENTER	03/19/21	6500	CHARTER COMMUNICATI	WELLNESS INTERNET	331.82
18552						331.82
	400 - WELLNESS CENTER	03/19/21	6500	CHARTER COMMUNICATI	WELLNESS INTERNET M	331.82
18553						3,715.81
	101 - GENERAL FUND	03/19/21	6146	SUPERION, LLC	4/1/2021-4/30/21	928.93
	552 - WATER	03/19/21	6146	SUPERION, LLC	4/1/2021-4/30/21	928.96
	553 - SEWER	03/19/21	6146	SUPERION, LLC	4/1/2021-4/30/21	928.96
	554 - REFUSE	03/19/21	6146	SUPERION, LLC	4/1/2021-4/30/21	928.96

18554						8,688.04
	101 - GENERAL FUND	03/19/21	144	THE GAS COMPANY	031-415-9000	303.18
	101 - GENERAL FUND	03/19/21	144	THE GAS COMPANY	033-515-9120-5	16.73
	101 - GENERAL FUND	03/19/21	144	THE GAS COMPANY	115-454-6222-5	16.73
	101 - GENERAL FUND	03/19/21	144	THE GAS COMPANY	163-715-6900	675.26
	101 - GENERAL FUND	03/19/21	144	THE GAS COMPANY	163-715-8900	478.43
	400 - WELLNESS CENTER	03/19/21	144	THE GAS COMPANY	092-375-2718-0	573.00
	400 - WELLNESS CENTER	03/19/21	144	THE GAS COMPANY	098-628-2905	6,624.71
18555						332.74
	400 - WELLNESS CENTER	03/19/21	3396	THYSSENKRUPP ELEVAT	1/1/2021-1/31/2021	332.74
18556						71.47
	101 - GENERAL FUND	03/19/21	6551	TIME WARNER CABLE	106076601021421	71.47
18557						55.00
	101 - GENERAL FUND	03/19/21	6413	TRANS UNION LLC	BASIC SERVICE	55.00
18558						1,157.00
	779 - 00-HOME-0487	03/19/21	4922	TRAVELERS INDEMNITY	J.GONZALEZ FIRE INS	1,157.00
18559						250.00
	400 - WELLNESS CENTER	03/19/21	1664	TU CO ENVIRONMENTAL	2223/2277	250.00
18560						207.05
	101 - GENERAL FUND	03/19/21	5608	TULARE CO. REGISTRA	NOV 3 GENERAL ELECT	207.05
18561						2,805.35
	101 - GENERAL FUND	03/19/21	6326	CORPORATE PAYMENT S	AMAZON	15.08
	101 - GENERAL FUND	03/19/21	6326	CORPORATE PAYMENT S	B & H PHOTO	423.04
	101 - GENERAL FUND	03/19/21	6326	CORPORATE PAYMENT S	AMAZON	157.68
	101 - GENERAL FUND	03/19/21	6326	CORPORATE PAYMENT S	AMAZON	445.86
	101 - GENERAL FUND	03/19/21	6326	CORPORATE PAYMENT S	AMAZON	97.86
	101 - GENERAL FUND	03/19/21	6326	CORPORATE PAYMENT S	ESRI	100.00
	101 - GENERAL FUND	03/19/21	6326	CORPORATE PAYMENT S	WAYFAIR	195.74
	101 - GENERAL FUND	03/19/21	6326	CORPORATE PAYMENT S	AMAZON	213.13
	101 - GENERAL FUND	03/19/21	6326	CORPORATE PAYMENT S	AMAZON	(32.31)
	101 - GENERAL FUND	03/19/21	6326	CORPORATE PAYMENT S	AMAZON	32.31
	101 - GENERAL FUND	03/19/21	6326	CORPORATE PAYMENT S	AMAZON	32.31
	101 - GENERAL FUND	03/19/21	6326	CORPORATE PAYMENT S	AMAZON	32.31
	101 - GENERAL FUND	03/19/21	6326	CORPORATE PAYMENT S	BEST BUY	330.24
	101 - GENERAL FUND	03/19/21	6326	CORPORATE PAYMENT S	BIG DADDY	306.75
	101 - GENERAL FUND	03/19/21	6326	CORPORATE PAYMENT S	CVS -PHOTOS	1.15
	101 - GENERAL FUND	03/19/21	6326	CORPORATE PAYMENT S	PAYPAL	32.21
	101 - GENERAL FUND	03/19/21	6326	CORPORATE PAYMENT S	MONOPRICE	52.52
	101 - GENERAL FUND	03/19/21	6326	CORPORATE PAYMENT S	H P SERVICES	79.27
	101 - GENERAL FUND	03/19/21	6326	CORPORATE PAYMENT S	PAYPAL	14.17
	101 - GENERAL FUND	03/19/21	6326	CORPORATE PAYMENT S	ADOBE	12.99
	101 - GENERAL FUND	03/19/21	6326	CORPORATE PAYMENT S	ADOBE	14.99
	101 - GENERAL FUND	03/19/21	6326	CORPORATE PAYMENT S	ADOBE	14.99
	101 - GENERAL FUND	03/19/21	6326	CORPORATE PAYMENT S	ADOBE	14.99
	101 - GENERAL FUND	03/19/21	6326	CORPORATE PAYMENT S	ADOBE	9.99
	101 - GENERAL FUND	03/19/21	6326	CORPORATE PAYMENT S	ZOOM	13.50
	101 - GENERAL FUND	03/19/21	6326	CORPORATE PAYMENT S	ZOOM	15.89
	101 - GENERAL FUND	03/19/21	6326	CORPORATE PAYMENT S	HONEYWELL STORE	26.47
	305 - COVID-19 EMERGENCY FUND	03/19/21	6326	CORPORATE PAYMENT S	RITE AID	76.11
	305 - COVID-19 EMERGENCY FUND	03/19/21	6326	CORPORATE PAYMENT S	RITE AID	76.11
18562						720.95
	552 - WATER	03/19/21	5413	UNIVAR USA INC	WELLS MATERIALS	720.95
18563						2,118.53
	101 - GENERAL FUND	03/19/21	356	USA BLUEBOOK	CAUTION SIGNS	256.74
	552 - WATER	03/19/21	356	USA BLUEBOOK	HOT TAP KIT 4 PLAST	1,861.79
18564						231.59
	101 - GENERAL FUND	03/19/21	1041	VERIZON WIRELESS	642065758-00003 2/2	38.60
	101 - GENERAL FUND	03/19/21	1041	VERIZON WIRELESS	642065758-00003 2/2	38.60
	101 - GENERAL FUND	03/19/21	1041	VERIZON WIRELESS	642065758-00003 2/2	38.60
	552 - WATER	03/19/21	1041	VERIZON WIRELESS	642065758-00003 2/2	38.60
	553 - SEWER	03/19/21	1041	VERIZON WIRELESS	642065758-00003 2/2	38.60
	554 - REFUSE	03/19/21	1041	VERIZON WIRELESS	642065758-00003 2/2	38.59

18565						1,434.37
	101 - GENERAL FUND	03/19/21	368	VOLLMER EXCAVATION,	LOAD OF COLD MIX	1,434.37
18566						7,690.00
	101 - GENERAL FUND	03/19/21	2790	WILLDAN INC.	BUILDING INSPECTOR	2,890.00
	101 - GENERAL FUND	03/19/21	2790	WILLDAN INC.	CODE ENFORCEMENT JA	4,800.00
18567						258.13
	261 - GAS TAX FUND	03/19/21	382	ZUMAR INDUSTRIES IN	TRUCK ARW UP SIGN	258.13
18568						370.40
	101 - GENERAL FUND	03/26/21	3977	AFLAC	DED:015 AFLAC	370.40
18569						451.34
	101 - GENERAL FUND	03/26/21	4660	CITY OF LINDSAY	DED:052 WELLNESS	4.62
	101 - GENERAL FUND	03/26/21	4660	CITY OF LINDSAY	DED:CDBG CDBG PMT	182.72
	101 - GENERAL FUND	03/26/21	4660	CITY OF LINDSAY	DED:L203 CDBG LOAN	264.00
18570						888.29
	101 - GENERAL FUND	03/26/21	451	CITY OF LINDSAY EMP	DED:0503 SEC 125	879.29
	101 - GENERAL FUND	03/26/21	451	CITY OF LINDSAY EMP	DED:0505 SEC 125	9.00
18571						137.24
	101 - GENERAL FUND	03/26/21	3192	SEIU LOCAL 521	DED:DUES UNION DUES	137.24
18572						7,392.60
	101 - GENERAL FUND	03/26/21	6452	GREAT-WEST TRUST	DED:0500 DEF COMP	2,930.32
	101 - GENERAL FUND	03/26/21	6452	GREAT-WEST TRUST	DED:ROTH ROTH	225.00
	101 - GENERAL FUND	03/26/21	6452	GREAT-WEST TRUST	DED:151 DEFERCOMP	2,615.37
	101 - GENERAL FUND	03/26/21	6452	GREAT-WEST TRUST	DED:0555 DC LOANPAY	1,621.91
18573						94.15
	101 - GENERAL FUND	03/26/21	6409	BERNARD HEALTH LEGA	DED:MET MET LAW	94.15
18574						50.82
	101 - GENERAL FUND	03/26/21	2325	LINDSAY PUBLIC SAFE	DED:LPOA LPOA DUES	50.82
18575						189.23
	101 - GENERAL FUND	03/26/21	3042	STATE DISBURSEMENT	DED:0512 CHILD SUPT	189.23
18576						391.21
	101 - GENERAL FUND	03/26/21	1955	TEAMSTERS LOCAL 856	DED:0508 TEAMSTERS	391.21
EDD326						3,970.10
	101 - GENERAL FUND	03/31/21	687	STATE OF CALIFORNIA	PRPD 3/26/2021 EDD	3,970.10
EDD331						69.31
	101 - GENERAL FUND	04/16/21	687	STATE OF CALIFORNIA	FINAL CK #1176	69.31
IRS326						25,949.50
	101 - GENERAL FUND	03/31/21	2011	INTERNAL REVENUE SE	941 PRPD 3/26/21	9,060.48
	101 - GENERAL FUND	03/31/21	2011	INTERNAL REVENUE SE	941 PRPD 3/26/21	16,889.02
IRS331						781.11
	101 - GENERAL FUND	04/16/21	2011	INTERNAL REVENUE SE	FINALCK-#1176	245.59
	101 - GENERAL FUND	04/16/21	2011	INTERNAL REVENUE SE	FINALCK-#1176	535.52



Monthly Treasurer's Report
March 31, 2021
Cash Balances Classified by Depository

CASH RESOURCES

LOCATION	GL ACCOUNT #	TYPE		BALANCE
Cash Register Funds (City Hall & Wellness)	100-102	RES	BEGINNING CASH	\$800
Bank of the Sierra- Depository Account	100-114	GEN	ALL FUNDS	\$930,329
Bank of the Sierra - AP/Operating	100-100	GEN	ALL FUNDS	\$380,355
Bank of the Sierra - Payroll	100-106	GEN	ALL FUNDS	\$2,303,144
Bank of the Sierra - Wellness Center	100-500	GEN	ALL FUNDS	\$477,031
Bank of the Sierra - Impound Account	100-120	RES	TRUST ACCT	\$64,531
LAIF Savings: City & Successor Agency	100-103	INV-RES		\$4,309,634
TOTAL				\$8,465,824

CASH EXPENDED

ACCOUNTS PAYABLE & PAYROLL	AMOUNT
Accounts Payable	\$823,884
Payroll (March 12th Payday)	\$215,310
Payroll (March 26th Payday)	\$224,467
TOTAL	\$ 1,263,661

DEBT SERVICE	TYPE	AMOUNT
TOTAL		\$ -

INVESTMENTS

INVESTMENT POLICY COMPLIANCE

As of the end of the month, the investments were in compliance with the requirements of the City's investment policy. This report reflects all cash and investments of the City of Lindsay (O/S checks not reflected in End Cash Balance).

INVESTED FUNDS	\$4,309,634
-----------------------	--------------------

Respectfully submitted,

Juana Espinoza

Finance and Accounting Manager
 City of Lindsay

ABBREVIATIONS

GEN: GENERAL UNRESTRICTED
 RES: RESTRICTED ACTIVITY
 INV: INVESTMENT



STAFF REPORT

TO: Lindsay City Council
FROM: Michael Camarena, Director of City Services and Planning
DEPARTMENT: City Services
ITEM NO.: 9.4
MEETING DATE: April 13, 2021

ACTION & RECOMMENDATION

Consider Approval of Task Order to Keller and Wegley Consulting Engineers for Nitrate Control Program and Salt Control Program Compliance Requirements.

BACKGROUND | ANALYSIS

The City received letters of compliance on June 1, 2020 regarding Priority 1 Basin permittees and the requirement to comply with Nitrate and Salt Control Programs.

The Nitrate Control Program has the following background and requirements:

In May 2018, the Central Valley Water Board (Board) approved new Salt and Nitrate Control Programs. The Nitrate Control Program was developed to address widespread nitrate pollution in the Central Valley. Nitrate in drinking water can reduce the blood's ability to carry oxygen, which can result in brain damage and death. Infants and pregnant women are most at risk of nitrate toxicity. Nitrate is a risk when it is above 10 parts per million (ppm) of nitrate nitrogen, which is the Primary Maximum Contaminant Level (MCL), also known as the nitrate drinking water standard.

The Board identified areas, referred to as Priority 1 and Priority 2 basins, where nitrates in groundwater are more prevalent and therefore pose a higher risk to persons who rely on groundwater as a source of drinking water. Priority 1 and Priority 2 basins have timelines under which permittees, such as the City, are required to implement Nitrate Control Program requirements.

The Nitrate Control Program has provided for 2 options of compliance pathway. Lindsay must declare the pathway that will be pursued.

Pathway A: New individual permitting options. The Board will set more stringent nitrate requirements in your permit to ensure that nitrate impacts will not cause a problem for drinking water users.



STAFF REPORT

Pathway B: Form or Join a Local Management Zone with other Permittees. A Management Zone is an association of permittees that work together to reduce nitrate loading and to provide replacement water to communities and individuals whose wells are impacted by nitrates.

The proposed task order will confirm the selection of Pathway A for the City. It is expected that with the condition of supply water from Wells 14 and 15 (as well as the surface water supply), the Nitrate program may be achievable with few modifications to our wastewater treatment facility. Both Wells 14 and 15 are below maximum contaminant levels for Nitrate.

The Salt Control Program has the following background and requirements:

In May 2018, the Central Valley Water Board adopted Resolution RS 2018-0034, approving new Salt and Nitrate Control Programs. The Salt Control Program was developed to address salt accumulation issues in surface water and groundwater throughout the Central Valley Region.

Under the new Salt Control Program, the Central Valley Water Board will impose new permit requirements to protect surface waters and groundwater from salts in wastewater. This Notice to Comply (NTC) requires you to choose between new salinity permitting options established under the new Salt Control Program. Note that NTCs such as this one are being issued to all permittees that discharge salt to surface water and/or groundwater in the Sacramento- San Joaquin River Basins and in the Tulare Lake Basin.

The Salt Control Program covers the entire Central Valley region and is broken into three phases, each of which will last from 10-15 years. The Board is currently beginning to implement Phase I. During Phase I, all permittees whose discharges exceed certain salinity thresholds set in the Salt Control Program will be required to participate in and help fund a comprehensive study to assess salinity problems and potential salinity solutions in the valley. This study has been named the Prioritization and Optimization Study, or P&O Study.

This NTC requires that you let the Board know whether you qualify for permit coverage under the "conservative" permitting approach, which is reserved for dischargers that fall under the salinity thresholds set by the Salt Control Program, or whether you will instead need permit coverage under the "alternative" salinity permitting approach.

These two permitting options are described in more detail below:

1. **Conservative Salinity Permitting Approach**

The Conservative Salinity Permitting Approach (Conservative Approach) utilizes the existing



STAFF REPORT

regulatory structure and focuses on source control, use of conservative permit limits, and limited use of assimilative capacity and/or compliance time schedules.

2. **Alternative Salinity Permitting Approach**

The Alternative Salinity Permitting Approach (Alternative Approach) provides a compliance option to permittees who participate in and provide a minimum level of financial support for the Prioritization and Optimization Study (P&O Study), led by the Central Valley Salinity Coalition, during Phase I of the Salt Control Program.

Permittees in the Alternative Approach are not required to meet the more stringent limitations of the Conservative Approach; however, they must continue to implement efforts to control salt discharges through salinity management practices and/or performance-based measures as determined by the Central Valley Water Board.

The permitting approach is undecided at the moment. The proposed task order will review and confirm the selection of the permitting approach for the City.

FISCAL IMPACT

Funding for the task order will be from professional services within the sewer enterprise fund. As this is a new requirement, the task order will initially be on a time and material basis to begin compliance with Pathway selection for the Nitrate program and selection of Permitting Approach for the Salt program. Staff will review future costs once these selections are confirmed. Future allocations within the sewer enterprise fund will allow for continued compliance with these new regulations.

ATTACHMENTS

- Nitrate Control Program Notice to Comply
- Salt Control Program Notice to Comply
- Attachment A, Task Order Approval Form



GAVIN NEWSOM
GOVERNOR



JARED BLUMENFELD
SECRETARY FOR
ENVIRONMENTAL PROTECTION

Central Valley Regional Water Quality Control Board

May 29, 2020

Certified Mail: 7019 2280 0001 9170 3167

Non-15 2117

City of Lindsay
PO Box 369
Lindsay, CA 93247



NITRATE CONTROL PROGRAM NOTICE TO COMPLY

PERMITTEES IN PRIORITY 1 BASINS

This letter contains legal requirements that must be followed. Failure to respond may result in enforcement action(s) being taken against you. Please note that you may also receive a separate Notice to Comply for the new Salt Control Program that will also require your response.

You are receiving this Notice to Comply because you operate the following one or more facilities:

Lindsay Industrial Treatment Plant

Near Hwys 65 & 137
Lindsay, CA 93247

Facility/Place ID: 232420
Order Number: 87-054
Priority 1 Basin: KAWEAH
CV-SALTS ID: 2145

Lindsay WWTF

23611 Road 196
Lindsay, CA 93247

Facility/Place ID: 273121
Order Number: 98-195
Priority 1 Basin: KAWEAH
CV-SALTS ID: 2670

Nitrate Control Program

This Page Intentionally Left Blank

Nitrate Control Program

This Notice to Comply (NTC) requires that you choose one of two nitrate compliance options, or “pathways,” established by new regulations. Regardless of which compliance option you choose, **your permit requirements will change**. If the address or ownership information on the first page is incorrect, please contact the Board so that we may correct our records. If you have questions or believe that you should be exempt from this NTC, please contact us by telephone, email, or mail. Our contact information is at the end of the letter.

Background

In May 2018, the Central Valley Water Board approved new Salt and Nitrate Control Programs. The Nitrate Control Program was developed to address widespread nitrate pollution in the Central Valley. Nitrate in drinking water can reduce the blood’s ability to carry oxygen, which can result in brain damage and death. Infants and pregnant women are most at risk of nitrate toxicity. Nitrate is a risk when it is above 10 parts per million (ppm) of nitrate nitrogen, which is the Primary Maximum Contaminant Level (MCL), also known as the nitrate drinking water standard.

The Board identified areas, referred to as Priority 1 and Priority 2 basins, where nitrates in groundwater are more prevalent and therefore pose a higher risk to persons who rely on groundwater as a source of drinking water. Priority 1 and Priority 2 basins have timelines under which permittees, such as you, are required to implement Nitrate Control Program requirements. **You are receiving this NTC because you are located in a Priority 1 basin for the Nitrate Control Program.** See Attachment 1 for a map of priority groundwater basins/sub-basins.

This Nitrate Control Program NTC requires that you choose between two compliance pathways:

Pathway A: New individual permitting options. The Board will set more stringent nitrate requirements in your permit to ensure that nitrate impacts will not cause a problem for drinking water users.

Pathway B: Form or Join a Local Management Zone with other Permittees. A Management Zone is an association of permittees that work together to reduce nitrate loading and to provide replacement water to communities and individuals whose wells are impacted by nitrates.

Pathway A offers several individual permitting options, all of which set stringent nitrate requirements on all dischargers that have nitrates in their wastewater. The Board expects that, for many permittees, Pathway A will require significant upgrades, extensive monitoring, and a rigorous technical justification that wastewater will not result in any exceedances of the nitrate standard over a 20-year planning horizon. Pathway B is a new permitting approach that allows multiple permittees to form or join in a Management Zone in order to comply with the Nitrate Control Program. Pathway B

Nitrate Control Program

provides a collaborative, locally managed, cost-effective and flexible approach to program compliance.

In order to make an informed decision and meet critical program deadlines, it is important that you take action now.

Step 1 – Before You Decide on a Pathway

Before you decide on a permitting pathway, the Board recommends that you visit the website cvsalts.info for more information on the Nitrate Control Program, including:

1. Nitrate Control Program requirements and timelines
2. Conducting an initial assessment (individually or collectively with other permittees) of your discharges and nearby groundwater conditions
3. Forming or participating in a Management Zone in your area
4. Requirements and templates for deliverables (e.g. Early Action Plans, Management Zone Proposals and Alternative Compliance Project proposals)
5. Answers to Frequently Asked Questions

The cvsalts.info website will be updated regularly, so be sure to check back frequently for the latest information. You can also check the website for upcoming webinars that will provide guidance information. Questions and information requests can also be made by sending an email to: cvsalts@waterboards.ca.gov.

A full copy of the Salt and Nitrate Control Program Basin Plan language (Attachment 1 of Resolution R5-2018-0034), can be found at: https://www.waterboards.ca.gov/centralvalley/board_decisions/adopted_orders/resolutions/r5-2018-0034_res.pdf.

Step 2 – Make a Pathway Choice and Begin Meeting Program Requirements

IF YOU CHOOSE PATHWAY A

General Requirements for Pathway A (Individual Approach) are as follows:

1. Assess your nitrate impacts to shallow groundwater.
2. Prepare a Nitrate Assessment Report that categorizes the impact of your discharge over a 20-year horizon. There are five categories for permittees choosing to comply under Pathway A.
3. Complete the Notice of Intent (NOI) that indicates your election of Pathway A.

An electronic fillable PDF version of the NOI is available at:

Nitrate Control Program

http://www.waterboards.ca.gov/centralvalley/water_issues/salinity/forms_template_guide/#notice_of_intent. A hardcopy can be sent to you by sending a request to cvsalts@waterboards.ca.gov.

4. Prepare an Early Action Plan (EAP) that will provide affected residents interim drinking water solutions where drinking water exceeds nitrate water quality objectives.
5. If a discharger is in Category 4 or 5, develop a proposed Alternative Compliance Project (ACP) as an additional condition. Any proposed Alternative Compliance Project must be in addition to activities that a permittee would implement to achieve their individual discharges full compliance with the nitrate water quality objective. An example ACP could include connecting septic systems to a wastewater treatment plant.
6. Submit your NOI and Nitrate Assessment Report to the Central Valley Water Board no later than **May 7, 2021**. Permittees that are required to complete an EAP and/or ACP proposal must also submit these documents with the NOI.
7. Obtain Central Valley Water Board evaluation and approval.
8. Initiate EAP (if applicable) within **60 days** following submittal of the plan, unless otherwise directed by the Central Valley Water Board.

IF YOU CHOOSE PATHWAY B

General Requirements for Pathway B (Management Zones) are as follows:

1. Permittees in a Management Zone work collectively to develop a Preliminary Management Zone Proposal and Early Action Plan (if applicable). The Early Action Plan must describe how the Management Zone entity will provide affected residents interim drinking water solutions where drinking water exceeds nitrate water quality objectives. Management Zone submits these documents to the Central Valley Water Board no later than **March 8, 2021**.
2. Management Zone initiates EAP within **60 days** following submittal of the plan, unless otherwise directed by the Central Valley Water Board.
3. Permittees submit an individual NOI that indicates their selection of Pathway B to the Central Valley Water Board no later than **May 7, 2021**. **Permittees who are named as a Management Zone member in the Preliminary Management Zone Proposal do not need to submit an NOI.**

Nitrate Control Program

An electronic fillable PDF version of the NOI is available at: http://www.waterboards.ca.gov/centralvalley/water_issues/salinity/forms_templates_guide/#notice_of_intent. A hardcopy can be sent to you by sending a request to cvsalts@waterboards.ca.gov.

4. Permittees working together as a Management Zone develop and submit a Final Management Zone Proposal, **180 days** after Central Valley Water Board's review of the preliminary proposal.
5. Permittees working together as a Management Zone develop and submit a Management Zone Implementation Plan, **6 months** after the Final Management Zone Proposal is accepted by the Executive Officer of the Central Valley Water Board.

Document submissions can be sent via email to cvsalts@waterboards.ca.gov or by mail to:

Central Valley Water Board
CV-SALTS Program
11020 Sun Center Drive, Suite 200
Rancho Cordova, CA 95670

The Central Valley Water Board recommends that the documentation be submitted in electronic format to the email or as a CD mailed to the address above. If you choose to submit documentation as a CD or hardcopy, USPS Certified Mail is the preferred mailing method to ensure receipt of delivery by the Central Valley Water Board.

This NTC requires your response under Water Code section 13260. If you do not respond to this request with the materials specified above by May 7, 2021, you may be subject to enforcement actions, including actions under Water Code section 13261, which authorizes the Board to impose liability of up to \$1,000 per day for failure to submit a report. **After May 7, 2021, discharges of nitrate are prohibited unless the permittee is implementing the Nitrate Control Program through either Pathway A (Individual Approach) or Pathway B (Management Zone Approach).**

For general information about the Central Valley Water Board's Salt and Nitrate Control Program, please visit: <https://www.waterboards.ca.gov/cvsalts/>.

Nitrate Control Program

If you have any further questions about what is required of you, please email cvsalts@waterboards.ca.gov or call (916) 464-4675.



Patrick Pulupa
Executive Officer

Enclosure: Attachment 1: Priority Groundwater Basins/Sub-basins

Para obtener una versión traducida de este documento, envíe un correo electrónico a cvsalts@waterboards.ca.gov. (Spanish)

如需本文档翻译版，请发送邮件至 cvsalts@waterboards.ca.gov. (Chinese)

Để nhận phiên bản dịch của tài liệu này, vui lòng gửi email đến cvsalts@waterboards.ca.gov. (Vietnamese)

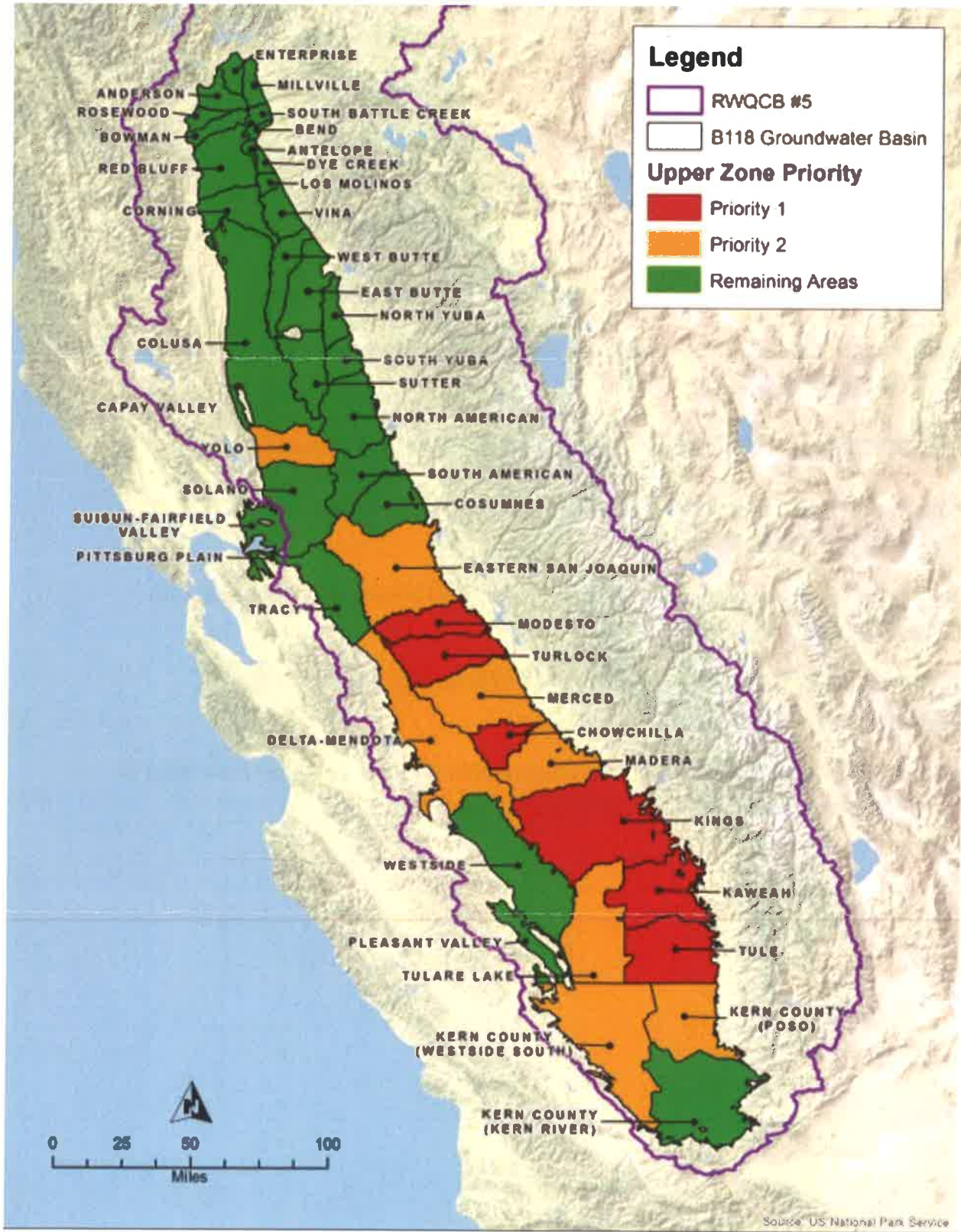
Yog koj xav tau daim ntaub ntawv no txhais ua lus Hmoob, thov xa email rau cvsalts@waterboards.ca.gov. (Hmong)

ਇਸ ਦਸਤਾਵੇਜ਼ ਦੇ ਪੰਜਾਬੀ ਅਨੁਵਾਦ ਲਈ, ਕ੍ਰਿਪਾ ਕਰਕੇ ਸਾਨੂੰ ਇਸ ਪਤੇ ਉਪਰ ਈ – ਮੇਲ ਭੇਜੋ cvsalts@waterboards.ca.gov. (Punjabi)

To obtain a translated version of this document in a language other than what is provided above, please email cvsalts@waterboards.ca.gov.

Nitrate Control Program

Attachment 1: Priority Groundwater Basins/Sub-basins





Central Valley Regional Water Quality Control Board

January 5, 2021

N15 2117

City of Lindsay
PO Box 369
Lindsay, CA 93247

SALT CONTROL PROGRAM

NOTICE TO COMPLY

This letter contains legal requirements that must be followed. Failure to respond may result in enforcement action(s) being taken against you. Please note that you may have received a separate Notice to Comply for the new Nitrate Control Program that will also require your response.

You are receiving this Notice to Comply because you operate the following one or more facilities:

Lindsay Industrial Treatment Plant

Near Hwys 65 & 137
Lindsay, CA 93247

Facility/Place ID: 232420
Order Number: 87-054
CV-SALTS ID: 2145

Lindsay WWTF

23611 Road 196
Lindsay, CA 93247

Facility/Place ID: 273121
Order Number: 98-195
CV-SALTS ID: 2670

KARL E. LONGLEY SCD, P.E., CHAIR | PATRICK PULUPA, ESQ., EXECUTIVE OFFICER

Salt Control Program

This Page Intentionally Left Blank

Salt Control Program
Notice to Comply

BACKGROUND

In May 2018, the Central Valley Water Board adopted Resolution R5-2018-0034, approving new Salt and Nitrate Control Programs. The Salt Control Program was developed to address salt accumulation issues in surface water and groundwater throughout the Central Valley Region.

Under the new Salt Control Program, the Central Valley Water Board will impose new permit requirements to protect surface waters and groundwater from salts in wastewater. This Notice to Comply (NTC) requires you to choose between new salinity permitting options established under the new Salt Control Program. Regardless of which compliance option you choose, your permit requirements will change at your next permit renewal. Please note that NTCs such as this one are being issued to all permittees that discharge salt to surface water and/or groundwater in the Sacramento-San Joaquin River Basins and in the Tulare Lake Basin.

If our information is incorrect, please contact us so that we may correct our records. If you have questions or believe you should be exempt from the NTC, please contact us as soon as possible by email or telephone. Our contact information is provided at the end of the letter.

SALT CONTROL PROGRAM

The Salt Control Program covers the entire Central Valley region and is broken into three phases, each of which will last from 10-15 years. The Board is currently beginning to implement Phase I. During Phase I, all permittees whose discharges exceed certain salinity thresholds set in the Salt Control Program will be required to participate in and help fund a comprehensive study to assess salinity problems and potential salinity solutions in the valley. This study has been named the Prioritization and Optimization Study, or P&O Study.

This NTC requires that you let the Board know whether you qualify for permit coverage under the “conservative” permitting approach, which is reserved for dischargers that fall under the salinity thresholds set by the Salt Control Program, or whether you will instead need permit coverage under the “alternative” salinity permitting approach. These two permitting options are described in more detail below:

1. Conservative Salinity Permitting Approach

The Conservative Salinity Permitting Approach (Conservative Approach) utilizes the existing regulatory structure and focuses on source control, use of conservative permit limits, and limited use of assimilative capacity and/or compliance time schedules.

2. Alternative Salinity Permitting Approach

The Alternative Salinity Permitting Approach (Alternative Approach) provides a compliance option to permittees who participate in and provide a minimum level of financial support for the Prioritization and Optimization Study (P&O Study), led by the Central Valley Salinity Coalition, during Phase I of the Salt Control Program. Permittees in the Alternative Approach are not required to meet the more stringent

Salt Control Program
Notice to Comply

limitations of the Conservative Approach, however, they must continue to implement efforts to control salt discharges through salinity management practices and/or performance-based measures as determined by the Central Valley Water Board.

RESPONDING TO THIS NTC

1. Visit the website, cvsalts.info, for more information on the Salt Control Program, including:
 - Salt Control Program requirements and timelines for both permitting pathways
 - Characterizing your salinity impacts to surface and/or groundwater
 - Participation requirements and fees for the P&O Study
 - Answers to Frequently Asked Questions

The cvsalts.info website will be updated regularly, so be sure to check back frequently for the latest information. You can also check the website for upcoming webinars that will provide guidance information.

A full copy of the Salt and Nitrate Control Program Basin Plan language, can be found at:

https://www.waterboards.ca.gov/cvsalts/salt_nitrate_bpa/snpc_accepted_bp_language_official.pdf.

2. Choose between the Conservative or Alternative Approach, submit the Notice of Intent (NOI) to the Central Valley Water Board, and begin meeting program requirements. The general NOI requirements for each approach are as follows:

A. Conservative Approach

- i. Conduct a comprehensive assessment of your salinity impacts to surface and/or groundwater.
- ii. Prepare a Salinity Characterization Report that demonstrates how your discharge will comply with the Conservative Approach requirements.
- iii. Submit your Salinity Characterization Report along with your NOI indicating your choice of the Conservative Approach Pathway to the Central Valley Water Board.
- iv. Obtain Central Valley Water Board staff approval.

B. Alternative Approach

- i. Contact the lead entity of the P&O Study to determine your required level of financial support. Submit your NOI indicating your choice of the Alternative Approach Pathway to the Central Valley Water Board along with documentation from the lead entity confirming your compliance with the required level of support.
- ii. Maintain the minimum required level of participation and financial support for the P&O Study and implement salinity source control measures and

Salt Control Program
Notice to Comply

meet performance-based salinity effluent limits or targets to ensure effluent salinity levels are maintained.

An electronic fillable PDF version of the NOI is available at: https://www.waterboards.ca.gov/cvsalts/forms_temps_guide/salt_noi_form.pdf. A hardcopy can be sent to you by sending a request by email to cvsalts@waterboards.ca.gov. NOI submissions shall be sent via email to cvsalts@waterboards.ca.gov or mailed to the address below by **July 15, 2021**. Documents too large to be sent in one email may be sent in multiple emails.

Central Valley Water Board
CV-SALTS Program
11020 Sun Center Drive, Suite 200
Rancho Cordova, CA 95670

The Central Valley Water Board recommends that the documentation be submitted in electronic format to the email or as a CD mailed to the address above. If you choose to submit documentation as a CD or hardcopy, USPS Certified Mail is the preferred mailing method to ensure receipt of delivery by the Central Valley Water Board.

ENFORCEMENT

This NTC requires your response under Water Code section 13260. If you do not respond to this request with the materials specified above by the due date, you may be subject to enforcement actions, including actions under Water Code section 13261, which authorizes the Board to impose liability of up to \$1,000 per day for failure to submit a report. Under the new regulations, the Board will regulate permittees who do not elect a pathway under the Conservative Approach. **After July 15, 2021, discharges of salts at concentrations that exceed the conservative salinity limits identified in the Conservative Approach are prohibited unless the permittee is implementing the Phase 1 requirements of the Salt Control Program through either the Conservative Approach or the Alternative Approach.** Permittees who do not respond within the time frame may still be eligible to select the Alternative Approach, however they will need to obtain approval from the lead entity conducting the P&O Study to join late and will be subject to the lead entity's requirements in addition to providing the minimum required level of financial support.

For general information about the Central Valley Water Board's Salt and Nitrate Control Program, please visit our website <https://www.waterboards.ca.gov/cvsalts>.

If you have any further questions about what is required of you, please email cvsalts@waterboards.ca.gov or call (916) 464-4675.



Patrick Pulupa
Executive Officer

Salt Control Program
Notice to Comply

Para obtener una versión traducida de este documento, envíe un correo electrónico a cvsalts@waterboards.ca.gov. (Spanish)

如需本文档翻译版，请发送邮件至 cvsalts@waterboards.ca.gov. (Chinese)

Để nhận phiên bản dịch của tài liệu này, vui lòng gửi email đến cvsalts@waterboards.ca.gov. (Vietnamese)

Yog koj xav tau daim ntaub ntawv no txhais ua lus Hmoob, thov xa email rau cvsalts@waterboards.ca.gov. (Hmong)

ਇਸ ਦਸਤਾਵੇਜ਼ ਦੇ ਪੰਜਾਬੀ ਅਨੁਵਾਦ ਲਈ, ਕ੍ਰਿਪਾ ਕਰਕੇ ਸਾਨੂੰ ਇਸ ਪਤੇ ਉਪਰ ਈ – ਮੇਲ ਭੇਜੋ cvsalts@waterboards.ca.gov. (Punjabi)

To obtain a translated version of this document in a language other than what is provided above, please email cvsalts@waterboards.ca.gov.

**ATTACHMENT A
TASK ORDER APPROVAL FORM**

CONSULTANT: DENNIS R. KELLER / JAMES H. WEGLEY, CONSULTING ENGINEERS

MASTER ENGINEERING AGREEMENT DATE: FEBRUARY 23, 2021

TASK ORDER: Nitrate Control Program and Salt Control Program Compliance Requirements.

The Master Engineering Agreement (AGREEMENT) for DENNIS R. KELLER / JAMES H. WEGLEY, CONSULTING ENGINEERS, a copy of which is attached hereto and incorporated herein by this reference and shall identify requirements for entering into this Task Order Agreement.

CONSULTANT agrees to perform the services described as;

1. Nitrate Control Program and Salt Control Program Compliance Requirements.

Payment for the above referenced tasks will be on a time and material basis.

Performance of this Task Order shall be subject to the terms and conditions contained in AGREEMENT.

Dated this _____ day of _____, 2021.

CITY OF LINDSAY

By: _____
Ramona Caudillo Mayor

CONSULTANT

DENNIS R. KELLER / JAMES H. WEGLEY, CONSULTING ENGINEERS

By: _____ Date: _____
Printed Name and Title

By: _____ Date: _____
Signature



STAFF REPORT

TO: Lindsay City Council
FROM: Juana Espinoza, Finance & Accounting Manager
DEPARTMENT: Finance
ITEM NO.: 9.5
MEETING DATE: April 13, 2021

ACTION & RECOMMENDATION

Consider the Approval of Resolution 21-08, Authorizing Staff to Submit a Claim to TCAG for Local Transportation Program Funds.

BACKGROUND | ANALYSIS

The City can submit a claim to TCAG to receive Local Transportation Fund (LTF) Funds. TCAG notifies the City when funds are available to claim for projects and the amount available. Currently, there is \$534,453.94 for the City of Lindsay.

The claim process requires the City to send a resolution and claim form to TCAG for the funds. The funds need to be used for local transportation projects. The City Services Department will identify which projects qualify for the funds and the Finance Department will track the funds to ensure they are recorded appropriately.

FISCAL IMPACT

If the claim is approved, the City would receive \$534K in funds for local transportation projects.

ATTACHMENTS

- Resolution 21-08
- Completed claim form (Form H)



A RESOLUTION OF THE CITY COUNCIL OF THE CITY OF LINDSAY

NUMBER 21-08

TITLE A RESOLUTION OF THE CITY COUNCIL OF THE CITY OF LINDSAY AUTHORIZING STAFF TO SUBMIT A CLAIM TO TULARE COUNTY ASSOCIATION OF GOVERNMENTS (TCAG) FOR LOCAL TRANSPORTATION FUNDS FOR FY 2020-2021

MEETING At a regularly scheduled meeting of the City of Lindsay City Council held on April 13, 2021 at 6:00 PM at 251 E. Honolulu Street, Lindsay, CA 93247

WHEREAS, the Tulare County Association of Governments (TCAG) provides Local Transportation Funds (LTF) annually to the City of Lindsay.

WHEREAS, the LTF money is restricted for streets and transportation projects.

WHEREAS, the City must submit a claim form to receive the annual allocation.

WHEREAS, the allocation for FY 2020-2021 is \$534,453.94.

NOW, THEREFORE, THE CITY COUNCIL OF THE CITY OF LINDSAY DOES HEREBY RESOLVE AS FOLLOWS:

- SECTION 1. To authorize staff to submit the LTF claim to TCAG for \$534,453.94.
- SECTION 2. This resolution shall be effective immediately upon its approval and adoption.
- SECTION 3. The Mayor, or presiding officer, is hereby authorized to affix her/his signature to the Resolution signifying its adoption by the City Council to the City of Lindsay, and the City Clerk, or their appointed deputy, is directed to attest thereto.



A RESOLUTION OF THE CITY COUNCIL OF THE CITY OF LINDSAY

PASSED AND ADOPTED by the City Council of the City of Lindsay as follows:

MEETING DATE	April 13, 2021
MOTION	
SECOND MOTION	
AYES	
ABSENT	
ABSTAIN	
NAYS	

CERTIFICATION OF THE FOREGOING RESOLUTION AS FULL, TRUE, PASSED AND ADOPTED BY THE CITY COUNCIL OF THE CITY OF LINDSAY AS DETAILED.

MAYRA ESPINOZA-MARTINEZ
CITY CLERK

RAMONA CAUDILLO
MAYOR



Juana Espinoza
Finance & Accounting Manager
City of Lindsay

251 E. Honolulu, P.O. Box 369
Lindsay, CA 93247
559.562.7102 x 8025
jespinoza@lindsay.ca.us

April 7, 2021

Tulare County Association of Governments (TCAG)
ATTN: Leslie Davis
210 N. Church St., Suite B
Visalia, CA 93291

Dear TCAG Board,

Attached is a copy of our worksheet and support document that serves as our formal claim request for available funds per the Transportation Development Act. Our claim is as follows:

STA: \$0.00
LTF: \$534,453.94

The City typically trades some of the STA with the County.

Please let me know if you have additional questions or need additional information.

Sincerely,

Juana Espinoza
Finance & Accounting Manager
City of Lindsay

Enclosed: Form H
STA and LTF Tables
Resolution 21-08 Authorizing LTF Claim for FY 2020-2021

CC: Ted Smally and Leslie Davis, TCAG
Joseph Tanner, City Manager
Michael Camarena, Director of City Services

FORM H
 Transportation Development Act Claims

Claimant: City of Lindsay
 Fiscal Year: 2020/2021

		STA	SGR	LTF
Available	STA Total	\$0.00	XXX	XXX
Funds	SGR Total	XXX	\$0.00	XXX
	LTF Total	XXX	XXX	\$534,453.94
	Total Available	\$0.00	\$0.00	\$534,453.94
Claims	LTF Local Transportation Contribution	XXX	XXX	\$24,382.13
	LTF Special Planning Contributions	XXX	XXX	\$6,204.85
	LTF Transit	XXX	XXX	\$0.00
	LTF Streets and Roads	XXX	XXX	\$503,866.96
	STA	0	XXX	XXX
	SGR	XXX	\$0.00	XXX
Total Claim:		\$0.00	\$0.00	\$534,453.94

2020/21 Local Transportation Fund Apportionment Estimate

Agency	Population 1/1/2020	% of Total Population	BALANCE	REVENUE	TOTAL	Transfer Agreements	TDA Administration	Penalties (Unclaimable) ³	AMOUNTS TO CLAIM				
			Cash Balance 7/1/2020	Estimate	Subtotal				Local Transportation Contribution ¹	Coordination and Mangmnt ¹	Project Implementation ¹	Public Transit and Streets & Roads ²	Claim Total
Dinuba	25,994	5.42%	\$4,655.28	\$1,071,422.10	\$1,076,077.38	\$0.00	(\$15,272.21)	\$0.00	\$48,182.24	\$6,823.75	\$5,437.83	\$1,000,361.35	\$1,060,805.17
Exeter	11,030	2.30%	\$17,400.01	\$454,635.14	\$472,035.15	\$0.00	(\$6,480.44)	\$0.00	\$20,445.11	\$2,895.51	\$2,307.43	\$439,906.67	\$465,554.71
Farmersville	11,399	2.37%	\$42,892.10	\$469,844.60	\$512,736.70	\$0.00	(\$6,697.23)	\$0.00	\$21,129.08	\$2,992.38	\$2,384.62	\$479,533.38	\$506,039.47
Lindsay	13,154	2.74%	\$0.00	\$542,182.28	\$542,182.28	\$0.00	(\$7,728.35)	\$0.00	\$24,382.13	\$3,453.09	\$2,751.76	\$503,866.96	\$534,453.94
Porterville	59,655	12.43%	\$123,605.51	\$2,458,863.02	\$2,582,468.53	\$0.00	(\$35,048.99)	\$0.00	\$110,575.97	\$15,660.19	\$12,479.55	\$2,408,703.83	\$2,547,419.54
Tulare	67,834	14.13%	\$0.00	\$2,795,985.49	\$2,795,985.49	\$0.00	(\$39,854.38)	\$0.00	\$125,736.49	\$17,807.28	\$14,190.56	\$2,598,396.78	\$2,756,131.10
Visalia	138,649	28.89%	\$128,574.73	\$5,714,842.00	\$5,843,416.73	\$0.00	(\$81,460.19)	\$0.00	\$256,998.52	\$36,397.11	\$29,004.74	\$5,439,556.17	\$5,761,956.54
Woodlake	7,773	1.62%	\$21,725.14	\$320,387.94	\$342,113.08	\$0.00	(\$4,566.86)	\$0.00	\$14,407.96	\$2,040.51	\$1,626.08	\$319,471.67	\$337,546.22
County	144,489	30.10%	\$602,734.43	\$5,955,555.43	\$6,558,289.86	\$0.00	(\$84,891.36)	\$0.00	\$267,823.50	\$37,930.18	\$30,226.44	\$6,137,418.39	\$6,473,398.51
TOTALS:	479,977	100%	\$941,587.20	\$19,783,718.00	\$20,725,305.20	\$0.00	\$282,000.00	\$0.00	\$889,681.00	\$126,000.00	\$100,409.00	\$19,327,215.20	\$20,443,305.20

¹Claimant claims these amounts for transfer of funds directly to TCAG.

²Amount available directly to agencies for transit, then streets and roads.

³Required per PUC Section 99268.9

Transfer	Transfer From	Transfer to	LTF Amount
b	Visalia	Dinuba	\$0.00
b	Visalia	Porterville	\$0.00
b	Visalia	Woodlake	\$0.00
a	Exeter	Visalia	\$0.00
a	Farmersville	Visalia	\$0.00

Updated 7/16/20

Transfer 'a' is routine transfer for services.
Transfer 'b' is for LCTOP



STAFF REPORT

TO: Lindsay City Council
FROM: Michael Camarena, Director of City Services and Planning
DEPARTMENT: City Services
ITEM NO.: 9.6
MEETING DATE: April 13, 2021

ACTION & RECOMMENDATION

Authorization to Bid 2020-2021 Sewer Enterprise Fund Capital Improvement Projects:

1. Influent Flow Control Project
2. Effluent Flow Control Project
3. Supervisory Control and Data Acquisition Expansion Project

All projects are located at the Lindsay Wastewater Treatment Facility, 23611 Road 196

BACKGROUND | ANALYSIS

Staff is requesting authorization to bid three projects listed in the 2020-2021 Sewer Enterprise Fund Capital Improvement Program (CIP). The three new projects and details are:

1. Influent Flow Control Project. Project will allow variable speed control of pumping at the primary influent point.
2. Effluent Flow Control Project. While the title is stated as flow control, initial intentions of this project will be to monitor finish wastewater effluent with the possibility of flow control (to potentially different percolation/evaporation locations).
3. Supervisory Control and Data Acquisition (SCADA) Expansion Project. SCADA expansion is expected to provide remote monitoring of influent and effluent flows as well as the possibility of remote operations of influent flow control.

FISCAL IMPACT

The approved 2020-2021 Sewer Enterprise Fund Capital Improvement Program (CIP) identifies the following budget amounts for each project:

1. Influent Flow Control Project, \$50,000.
2. Effluent Flow Control Project, \$50,000.
3. Supervisory Control and Data Acquisition (SCADA) Expansion Project, \$50,000.

ATTACHMENTS

- None included.



STAFF REPORT

TO: Lindsay City Council
FROM: Joseph M. Tanner, City Manager
DEPARTMENT: City Manager
ITEM NO.: 10.1
MEETING DATE: April 9, 2021

ACTION & RECOMMENDATION

1. Consider the Approval of Resolution 21-10 requiring development approvals for all development projects within the City of Lindsay to be subject to the condition that necessary municipal services be funded by utilization of a Community Facilities District or other approved funding mechanism, and
2. Authorize the City Manager to enter into an agreement with Webb Municipal Finance, LLC for Community District Formation and Annexation Services.

BACKGROUND | ANALYSIS

The Mello-Roos Community Facilities Act of 1982 allows for the creation of Community Facilities Districts (“CFD”) in the state of California. A CFD can be an immense tool for government agencies to help finance the costs of new development’s ongoing maintenance services needs through the levy of voter approved special taxes. The special tax is then applied annually to the property tax bill. Services CFD special taxes may be levied in perpetuity as long as the services are still being provided by the agency.

The use of CFDs have aided numerous California counties, cities, and various other municipal agencies to alleviate financial burdens from their general funds by allocating costs to the property owners who reside in the development. These of funds have proven to be stable, even though times of economic recession, providing a level of certainty from year to year.

There are a variety of ways in which an agency may structure their CFD program to account for ease of formation and annexation as development continues to progress throughout the agency boundary. The Act provides for flexibility in the structure and services to be included. It truly is a versatile tool. The most common services CFDs we form and administer for our clients are:

1. Maintenance Services CFD – which provides for the maintenance of public streets, street sweeping services, landscaping and lighting of public streets, parks, open spaces and other similar landscaped areas officially dedicated for public use, and storm drainage and flood protection structures. While this list is not exhaustive it serves to illustrate the common uses of a maintenance services CFD.



STAFF REPORT

The special tax for maintenance services will vary per development and depend on the types of services and the area or quantity of the services to be included

2. Public Safety Services CFD – provides funding for police protection services, fire protection and suppression services, and ambulance and paramedic services o The special tax for public safety services will be a standard citywide rate and will require a fiscal impact analysis to be completed in order to calculate the citywide rate applicable to all new development

Formation Process

The formation process of a CFD is governed by the Act and is outlined in brief form below:

1. It all starts with a request from a landowner. This step includes a deposit being submitted to cover the costs of the formation process

2. Special tax consultant to draft Rate and Method or Apportionment (“RMA”) and boundary map

3. The legislative body commences proceedings (the Resolution of Intention): a. Adopt CFD Goals and Policies (required only one time at the formation of the agency’s first CFD) b. Adopt Resolutions to: i. Approve boundaries (and Annexation Area, if necessary) ii. Designate CFD name iii. Identify types of services to be included iv. Declare Intention to: 1. Form CFD 2. Levy special tax v. Set time and place of public hearing vi. Establish voting procedures

4. Prior to the Public Hearing a. Confirm less than 12 Registered Voters in the Boundary b. Draft CFD report c. Record boundary map

5. Publish notice of hearing not later than 7 days before Public Hearing

6. Hold a Public Hearing (Resolution of Formation): a. Must be held not less than 30 days and not more than 60 days from adoption of Resolution of Intention (may be continued if needed) b. If no majority protest, proceed with Resolutions Adopting to Form CFD by: i. Establishing boundaries ii. Authorizing levy of special tax iii. Approving types of services iv. Setting election

7. Special Election a. May be held directly following close of Public Hearing (requires 100% of landowners approval by waiver) b. Requires 2/3 landowner vote (by acreage)

8. Enact ordinance to levy special tax

9. Record Notice of Special Tax Lien

Requirements to Start The standard documents required to begin this process are outlined below. A special tax consultant will help assist in drafting a full application package that can be provided to each developer to complete.³

1. Draft agency CFD Goals and Policies

2. Agency to update development approval procedures to include requirement to provide for funding of maintenance services and public safety services (CFD)

3. Identify a development as the flagship project to form CFD

4. Have developer submit the following items:



STAFF REPORT

- a. Nonrefundable deposit for CFD formation process
- b. A standard application packet which includes:
 - i. Owner contact information
 - ii. Title report
 - iii. Project description
 - iv. Legal description of property including tract/parcel map
 - v. Maintenance quantity worksheet for services to be funded by CFD
 - vi. Maintenance exhibit

Currently the City utilizes a number of assessment districts. These districts operate very similar to a CFD but are much more limiting in their scope.

FISCAL IMPACT

All costs associated with the proposed contract will be recovered through the assessments of any new developments within the City.

ATTACHMENTS

- Resolution No. 21-10
- Webb Municipal Finance Proposal and Rate Sheet



March 24, 2021

Joe Tanner
City Manager
City of Lindsay
251 E. Honolulu Street
Lindsay, CA 93247

RE: Community Facilities District Formation and Annexation Services

Dear Joe:

Webb Municipal Finance, LLC (WEBB) is pleased to submit this proposal to provide Community Facility District Formation and Annexation Services.

Our proposed Scope of Services are outlined below:

SERVICES CFD FORMATION SERVICES

Kickoff Meeting and Gathering Information: We will work to establish lines of communication and gain understanding of the specific goals, components and criteria to meet the City's needs. We will meet with the City's Staff and legal counsel to confirm the CFD's schedule of events, procedural and financial considerations, establish the appropriate land use classifications and discuss and identify the boundaries of the proposed CFD.

Tax Spread: We will work with City Staff to establish a Special Tax formula for the necessary revenues to cover the costs of providing City services including but not limited to public safety, community services and public works based on anticipated development and ultimate service cost needs to the City including administrative costs. Based on the proposed structure of the Special Tax formula, WEBB will determine the appropriate methodology for allocating the costs to the various land use classifications.

- Special Tax formula rate structure based on specific services provided and tailored to each development/annexation. Rates will vary per development/annexation based on the improvements to be maintained and services provided and can escalate annually by a predetermined percentage or Consumer Price Index (CPI)
- Special Tax formula rate structure based on a cost estimate of overall general services provided not specific to a development/annexation. Rates are set but escalate annually by a predetermined percentage or CPI.

Rate and Method of Apportionment and Public Report Preparation: We will prepare a proposed Rate and Method of Apportionment (RMA) that takes into consideration the various land use classifications and provides the necessary flexibility for a variety of developments to be included in the City. The RMA will take into consideration: Special Tax Formula chosen by the City, clarity of language in the definition of terms, ability of the property to be assigned to different tax classifications, and presence of a mechanism to levy taxes in the event of a change in projects and usage. WEBB will also prepare the CFD public report, including a description of the services to be performed, and projected annual special tax.

Boundary Map: Our team of engineers and GIS Specialists will prepare the Boundary Map illustrating the boundaries of territory proposed for inclusion in the district capturing the entirety of any parcel subject to taxation by the proposed district. WEBB will also prepare a Citywide Annexation Area Map to include

the Boundaries of any potential annexation area. The maps shall meet the requirements of the Mello-Roos Act and the Tulare County Recorder's Office. Additionally, we will coordinate recordation of the maps with City Staff and the Recorder's Office.

Meetings: WEBB will attend (virtually) any necessary public meetings, as required by the Mello Roos Act, fully prepared to present necessary testimony and respond to public comments.

Primary Contact Toll Free Phone Number: WEBB will serve as primary contact with the public regarding the special tax. WEBB will provide a toll-free number for the City and all property owners to provide information with regards to the proposed ballot measures.

Landowner Election: WEBB will prepare a list of the owner names and acreages for the City's legal counsel so they may obtain a certificate from the Registrar of Voters confirming whether there are, or are not, registered voters within the boundaries of the annexation.

Notice of Special Tax Lien: WEBB will provide a list of Assessor's Parcel Numbers for the Notice of Special Tax Lien and coordinate recordation of the notice with City Staff and the Recorder's Office.

ANNEXATION SERVICES

Information Gathering: WEBB will have a conference call with the City's Staff, legal counsel, team of consultants and project proponents to confirm the annexation schedule of events, procedural and financial considerations, establish the appropriate land use classifications, and discuss and identify the boundaries of the proposed annexation.

Data Collection: WEBB will obtain the latest assessor's parcel maps and secured tax roll information from the Tulare County Assessor's Office and Geographic Information System (GIS) shape files for our in-house GIS platform for the parcels within the proposed annexation.

Timeline: WEBB will coordinate with City staff to establish a schedule. WEBB will prepare a timeline, based on the City's scheduling requirements, outlining key dates, events and responsibilities adhering to statute requirements. We will review the timeline with City staff and make adjustments as needed.

Annexation Boundary Map: WEBB's team of engineers and GIS Specialists will prepare the Annexation Boundary Map, illustrating the boundaries of territory proposed for inclusion in the district, capturing the entirety of any parcel subject to taxation by the district. The map shall meet the requirements of the Mello-Roos Act and the Tulare County Recorder's Office. Additionally, WEBB will coordinate recordation of the map with City Staff and the Recorder's Office.

Meetings: WEBB will attend (virtually) any necessary public meetings, as required by the Mello Roos Act, fully prepared to present necessary testimony and respond to public comments.

Primary Contact Toll Free Phone Number: WEBB will serve as primary contact with the public regarding the special tax. WEBB will provide a toll-free number for the City and all property owners to provide information with regards to the proposed ballot measures.

Landowner Election: WEBB will prepare a list of the owner names and acreages for the City's legal counsel so they may obtain a certificate from the Registrar of Voters confirming whether there are, or are not, registered voters within the boundaries of the annexation.

Notice of Special Tax Lien: WEBB will provide a list of Assessor's Parcel Numbers for the Notice of Special Tax Lien and coordinate recordation of the notice with City Staff and the Recorder's Office.

COMPENSATION

Upon receipt of additional developer deposits, we propose to be compensated a fixed fee for services performed according to the schedule outlined as follows:

PROPOSED FEE SCHEDULE

Service	Total Fee
Formation Services – Community Facilities District	\$20,000
Annexation Services	\$5,000

For the services performed related to the projects which are not listed herein, compensation shall be at the hourly rates set forth on Attachment A, together with reimbursement, at cost, for incidental expenses incurred in connection with such services, together with reimbursement for outside services at cost plus 15%.

We look forward to working with the City. If you have any questions regarding our proposal, or if additional information is needed, please contact me directly at (951) 200-8604.

Sincerely,



Heidi Schoeppe
President/Managing Director
Webb Municipal Finance, LLC

CONCURRENCE OF CITY OF LINDSAY

This authorizes Webb Municipal Finance, LLC to proceed with the Services CFD Formation Services and bill a total of \$20,000 upon completion and \$5,000 for each subsequent completed Annexation to the Services CFD.

City of Lindsay
Joe Tanner
City Manager



Attachment "A"

CLASSIFICATION

<u>Engineers/Project Managers/Planners/Scientists/ Assessment/Special Tax Consultants/Landscape Architects/Designers</u>	<u>Rates \$/Hour</u>
Principal II.....	273.00
Principal I	252.00
Senior III	231.00
Senior II	214.00
Senior I	203.00
Associate III	192.00
Associate II	176.00
Associate I	166.00
Assistant V	155.00
Assistant IV	139.00
Assistant III	123.00
Assistant II	106.00
Assistant I	90.00

Survey Services

2-Person Survey Party	276.00
1-Person Survey Party	191.00

Inspection Services

Inspector (Non-Prevailing Wage)	129.00
Inspector (Prevailing Wage)	139.00

Administrative Services

Project Coordinator	104.00
Administrative Assistant III	94.00
Administrative Assistant II	83.00
Administrative Assistant I	66.00

Other Direct Expenses

Incidental Charges	Cost + 15%
Postage	Cost
Subcontracted Services	Cost + 15%
Special Consultant.....	345.00
Survey/Inspection Per Diem.....	Prevailing Wage Rate
In-House Delivery Up to 1/2 hour.....	28.00
In-House Delivery 1/2 Hour up to 1 Hour.....	55.00
In-House Delivery Over 1 Hour up to 2 Hours	100.00
In-House Delivery Over 2 Hours	150.00
Survey/Inspection Vehicle	0.81/Mile
Mileage	0.72/Mile

Note: All rates are subject to change based on annual inflation and cost of living adjustments. Prevailing wages are dictated by the California Department of Industrial Relations (DIR). As such, the indicated rate will remain in effect until revised rates are published by the DIR. The rate shown shall be subject to renegotiation to remain in compliance with State requirements if prevailing wages are increased by the DIR.

* **A FINANCE CHARGE** of 1 ½ % per month (18% per year) will be added to any unpaid amount commencing thirty (30) days from invoice date. A mechanic's lien may be filed for any invoice remaining unpaid after thirty (30) days from invoice date.



A RESOLUTION OF THE CITY COUNCIL OF THE CITY OF LINDSAY

NUMBER 21-10

TITLE A RESOLUTION OF THE CITY COUNCIL OF THE CITY OF LINDSAY REQUIRING DEVELOPMENT APPROVAL FOR ALL DEVELOPMNET PROJECTS WITHIN THE CITY OF LINDSAY TO BE SUBJECT TO THE CONDITION THAT NECESSARY MUNICIPAL SERVICES BE FUNDED BY UTILIZATION OF A COMMUNITY FACILITIES DISTRICT OR OTHER FUNDING MECHANISM.

MEETING At a regularly scheduled meeting of the City of Lindsay City Council held on April 9, 2021 at 6:00 PM at 251 E. Honolulu Street, Lindsay, CA 93247

WHEREAS, the Mello-Roos Community Facilities Act of 1982 allows for the creation of Community Facilities districts; and

WHEREAS, it is the established policy of the City, for each new development within the City to bear the costs of necessary public facilities and municipal services required to serve such development without increasing the financial burden of existing residents, property owners, and taxpayers within the City; and

WHEREAS, the City Council has found and determined that utilization of a Community Facilities District is the most reasonable method of assuring that such municipal services cost is borne by all such development projects and is a reasonable method; and

WHEREAS, the City Manager has the authority to execute a contract for formation and annexation services;

NOW, THEREFORE, THE CITY COUNCIL OF THE CITY OF LINDSAY DOES HEREBY RESOLVE AS FOLLOWS:

SECTION 1. All new development projects and/or redevelopment within the City of limits are subject to the condition of annexation into a Community Facilities District.

SECTION 2. The City shall The City shall classify as Exempt Property (i) Assessor's Parcels which are owned by, irrevocably offered for dedication, encumbered by or restricted in use by the State of California, Federal or other local governments, including school districts, (ii) Assessor's Parcels which are used as places of worship and are exempt from ad valorem property taxes because they are owned by a religious organization, (iii) Assessor's Parcels



A RESOLUTION OF THE CITY COUNCIL OF THE CITY OF LINDSAY

which are owned by, irrevocably offered for dedication, encumbered by or restricted in use by a homeowner's association, (iv) Assessor's Parcels with public or utility easements making impractical their utilization for other than the purposes set forth in the easement, (v) Assessor's Parcels which are privately owned and are encumbered by or restricted solely for public uses or classified as Agricultural Buffer property, or(vi) other types of public uses determined by the City Council.

PASSED AND ADOPTED by the City Council of the City of Lindsay as follows:

MEETING DATE	April 13, 2021
MOTION	
SECOND MOTION	
AYES	
ABSENT	
ABSTAIN	
NAYS	

CERTIFICATION OF THE FOREGOING RESOLUTION AS FULL, TRUE, PASSED AND ADOPTED BY THE CITY COUNCIL OF THE CITY OF LINDSAY AS DETAILED.

MAYRA ESPINOZA-MARTINEZ
CITY CLERK

RAMONA CAUDILLO
MAYOR



STAFF REPORT

TO: Lindsay City Council
FROM: Lt. Nicholas Nave
DEPARTMENT: Public Safety
ITEM NO.: 10.2
MEETING DATE: April 13, 2021

ACTION & RECOMMENDATION

Consider Approval of Speed Enforcement Expenditures.

BACKGROUND | ANALYSIS

City Services and Public Safety presented a Staff Report regarding the City's Speed Hump Program and Speed Enforcement Activities at the March 9th, 2021 Regular City Council Meeting. This was an action item, with requests by both City Services and Public Safety to expend funds to restart speed enforcement activities.

The item was tabled and Council member Cerros requested a meeting with both departments and the City Manager for additional information. Following that meeting, Council member Cerros requested information regarding pole-mounted RADAR speed signs and the associated costs, in lieu of the purchase of a mobile RADAR Trailer.

1. Speed Enforcement Expenditures

To conduct effective speed enforcement, the city needs to conduct an Engineering and Traffic Survey (ETS) on selected roads, or sections of roads where RADAR/LIDAR speed enforcement is to take place, with a few exceptions. These surveys are required by California Vehicle Code §40802 et seq. and must be conducted at periodic intervals of either 4, 7 or 10 years. City of Lindsay survey was last conducted on 2004.

The Public Safety Department currently has three portable RADAR devices, but those devices would require certified calibration prior to being utilized for enforcement purposes again. This periodic calibration is required by law to occur every 36 months, and records of that calibration be maintained.

Public Safety personnel would need to be trained on the operation of RADAR in order to utilize it for enforcement purposes. The certification class is 24 hours in length. The Public Safety Department already has a certified RADAR instructor.



STAFF REPORT

Additionally, the Public Safety Department's RADAR trailer is out of service and due to its age, repairs are cost prohibitive. This tool has been used effectively in years past to address periodic complaints from residents in addition to other methods, such as high visibility and enforcement.

FISCAL IMPACT:

Funding Source: Streets Fund

1. Pole-Mounted Speed Radar Signs: Approximately \$6,500 per sign (Materials & installation)
2. Engineering and Traffic Surveys: Approximately \$5,000.

Funding Source: General Fund

3. Speed Trailer Purchase: \$20,000
4. RADAR Unit Recalibration (All): \$500
5. Training Cost: Variable, depending on scheduling availability and/or overtime costs

ATTACHMENTS

- None



STAFF REPORT

TO: Lindsay City Council
FROM: Kira Noguera, City Planner
DEPARTMENT: City Services
ITEM NO.: 11.1
MEETING DATE: April 13, 2021

ACTION & RECOMMENDATION

Staff recommends that the City Council consider and approve Conditional Use Permit No. 20-07, based on these findings and subject to the following conditions, which are included in the attached draft resolution.

- The final plan of development shall be reviewed by the City Services Department to ensure the submittals are in substantial compliance with the proposed site plan, drawings, and all applicable Lindsay Development Standards.
- A cross access agreement shall be recorded between APN 205-282-012 and 205-282-013 to allow for parking and use of the trash enclosure, to which the City shall be a party to.

Staff also recommends that the City Council consider and approve Resolution 21-09, Approving Conditional Use Permit No. 20-07, A Request by Chester Law to Remodel an Existing Two-Story Building to Include Commercial Units on the First Floor and Eight Residential Units on the Second Floor, Within the Central Commercial (CC) Zoning District, for Property Located at 185 West Honolulu Street (APN 205-282-012 & -013).

BACKGROUND | ANALYSIS

Project Description: Conditional Use Permit No. 20-07 (APN: 205-282-012 & -013) is a request by Chester Law to remodel an existing two story building to include four commercial units on the first floor and eight residential units on the second floor at 185 West Honolulu Street, located at the corner of North Sweetbriar Avenue and West Honolulu Street. The property is zoned CC (Central Commercial). The City of Lindsay Municipal Code allows for residential uses in the CC zone with the issuance of a Conditional Use Permit.

Parking and Traffic: The project is not anticipated to generate significant volumes of additional traffic and will not require alterations to streets or highways. The commercial use can be considered existing as the building was built for commercial use. The conversion of the second floor to residential units requires the provision of off-street parking. A total of 16 off-street parking spaces are required for the eight two-bedroom apartment units. Given that parking is provided off-site on the neighboring parcel to



STAFF REPORT

the north (APN: 205-282-012), a cross-access agreement is required to be recorded between the two properties.

Other improvements: The project must meet all requirements of the code. All submittals will be reviewed for consistency with code requirements including, but not limited to, lighting, landscaping, and refuse collection. Construction of a trash enclosure to serve the project is required and shall meet all standards of refuse collection and storage container requirements. The aforementioned cross-access agreement must also allow for use of the trash enclosure by the proposed development.

The existing memorial park shall be maintained to acceptable standards and if identified as a path of travel for connection to the proposed parking area, shall meet all standards for path of travel compliance.

Compatibility with Existing Zoning, Plans, and Policies: The current zone classification (CC Central Commercial) allows for a residential use in conjunction with a permitted use in accordance with requirements of the RM-1.5 district with approval of a CUP according to 18.10.030.D of the Lindsay Municipal Code. The project site has a General Plan designation of Central Commercial. The proposed use is in keeping with this designation.

Project Evaluation: Staff believes that the project is compatible with surrounding land uses and is consistent with all existing zoning, plans, and policies. The investment in this downtown property is an excellent benefit to the surrounding area. The availability of a new mixed use that includes both commercial and residential uses will significantly enhance the downtown area. Thriving downtowns include spaces such as this for people to live and work.

FISCAL IMPACT

The project is not anticipated to negatively impact City Resources. The site will be monitored to ensure Public Safety resources are not impacted.

ATTACHMENTS

- Site Plan and concept layouts
- Resolution 21-09, Approving Conditional Use Permit No. 20-07, A Request by Chester Lew to Remodel an Existing Two-Story Building to Include Commercial Units on the First Floor and Eight Residential Units on the Second Floor, Within the Central Commercial (CC) Zoning District, for Property Located at 185 West Honolulu Street (APN 205-282-013).

A Reconstruction / Remodel for 2-Story Commercial Building

185 West Honolulu Street

Lindsay, CA 93247

General Notes

- NOTHING IN THESE DRAWINGS AND/OR THE SPECIFICATIONS SHALL BE CONSTRUED TO PERMIT AN INSTALLATION THAT COULD BE IN VIOLATION OF THE APPLICABLE CODES, REGULATIONS, ORDINANCES AND STANDARDS HAVING JURISDICTION. IF THERE ARE ANY QUESTIONS OR CONFLICTS CONCERNING COMPLIANCE WITH SUCH CODES, ORDINANCES OR STANDARDS, THE CONTRACTOR IS RESPONSIBLE FOR NOTIFYING THE ARCHITECT BEFORE PROCEEDING WITH THE WORK IN QUESTION.
- CONTRACTOR IS RESPONSIBLE FOR CHECKING ALL CONTRACT DOCUMENTS, FIELD CONDITIONS AND DIMENSIONS FOR ACCURACY AND CONFIRMING THAT THE WORK IS BUILDABLE AS SHOWN AND MEETS ALL APPLICABLE CODES BEFORE PROCEEDING WITH CONSTRUCTION. IF THERE ARE QUESTIONS REGARDING THESE OR OTHER COORDINATION ISSUES, THE CONTRACTOR IS RESPONSIBLE FOR OBTAINING CLARIFICATION FROM THE ARCHITECT BEFORE PROCEEDING WITH THE WORK IN QUESTION.
- WRITTEN DIMENSIONS ON THESE DRAWINGS SHALL HAVE PRECEDENCE OVER SCALED DIMENSIONS. THE CONTRACTOR SHALL VERIFY AND BE RESPONSIBLE FOR ALL DIMENSIONS AND CONDITIONS ON THE JOB AND THE DESIGNER MUST BE NOTIFIED OF ANY VARIATIONS FROM THE DIMENSIONS AND CONDITIONS SHOWN BY THESE DRAWINGS.
- THE CONTRACTOR SHALL CERTIFY THE SIZE AND LOCATION OF ALL REQUIRED OPENINGS FOR STRUCTURAL, MECHANICAL, ELECTRICAL AND PLUMBING WORK AND EQUIPMENT WITH TRADES INVOLVED.
- THE GENERAL CONTRACTOR AND EACH SUBCONTRACTOR SHALL BE RESPONSIBLE FOR CHECKING EXISTING CONDITIONS AT THE JOB BEFORE SUBMITTING PROPOSALS. SUBMISSION OF PROPOSALS SHALL BE TAKEN AS EVIDENCE THAT SUCH INSPECTIONS HAVE BEEN MADE. CLAIMS FOR EXTRA COMPENSATION FOR WORK THAT COULD HAVE BEEN FORESEEN BY SUCH INSPECTION, WHETHER SHOWN ON CONTRACT DOCUMENTS OR NOT, SHALL NOT BE ACCEPTED OR PAID.
- ALL MATERIALS FURNISHED UNDER THIS CONTRACT SHALL BE NEW UNLESS OTHERWISE NOTED. ALL WORK SHALL BE GUARANTEED AGAINST DEFECTIVE MATERIALS AND WORKMANSHIP FOR A PERIOD OF ONE (1) YEAR AFTER THE DATE OF SUBSTANTIAL COMPLETION OR ACCEPTANCE OF THE WORK. THE CONTRACTOR SHALL REPAIR OR REPLACE, AT HIS OWN EXPENSE WHEN ORDERED TO DO SO, ALL WORK THAT MAY DEVELOP DEFECTS IN MATERIAL AND WORKMANSHIP WITHIN SAID PERIOD OF TIME.
- ALL EQUIPMENT SHALL BE INSTALLED IN ACCORDANCE WITH MANUFACTURER'S PUBLISHED RECOMMENDATIONS FOR SERVICE INTENDED, AS INTERPRETED BY THE ENGINEER. THE INSTALLATION OF ALL EQUIPMENT SHALL BE MADE BY EXPERIENCED CRAFTSMEN IN A NEAT, WORKMANLIKE MANNER. ALL MATERIALS, TOOLS, COSTS AND SERVICES NECESSARY TO COMPLETELY INSTALL ALL MECHANICAL, ELECTRICAL, AND PLUMBING WORK SHALL BE PROVIDED BY THE CONTRACTOR.
- INSTALL NECESSARY BLOCKING, BACKING, FRAMING, HANGERS AND OTHER SUPPORT FOR FIXTURES, EQUIPMENT, SHELVING AND CASEWORK, EVEN IF SAID ITEMS ARE NOT SPECIFICALLY INDICATED OR NOTED ON THE PLANS.
- IT IS THE INTENT AND MEANING OF THE CONTRACT DOCUMENTS THAT THE CONTRACTOR SHALL PROVIDE A MECHANICAL, ELECTRICAL, AND PLUMBING INSTALLATION THAT IS COMPLETE. ALL ITEMS AND APPURTENANCES NECESSARY, REASONABLE INCIDENTAL OR CUSTOMARILY INCLUDED, EVEN THOUGH EACH AND EVERY ITEM IS NOT SPECIFICALLY CALLED OUT OR SHOWN IN THE CONSTRUCTION DOCUMENTS SHALL BE PROVIDED.
- THE CONTRACTOR SHALL PROVIDE UPDATED RECORD DOCUMENTS OF AS-BUILT CONDITIONS ON SITE WHEN DIFFERENT FROM THE CONSTRUCTION DOCUMENTS, AND SHALL PROVIDE SAID DOCUMENTS TO DESIGNER UPON COMPLETION OF CONSTRUCTION.
- ALL WORK SHALL BE IN CONFORMANCE WITH THE CURRENTLY ADOPTED EDITION OF THE FOLLOWING APPLICABLE CODES:
 - A. 2019 CALIFORNIA BUILDING CODE
 - B. 2019 CALIFORNIA ELECTRICAL CODE
 - C. 2019 CALIFORNIA MECHANICAL CODE
 - D. 2019 CALIFORNIA PLUMBING CODE
 - E. 2019 CALIFORNIA FIRE CODE
 - F. 2019 CALIFORNIA FIRE CODE, CHAPTER 33
 - G. PUBLIC SAFETY, TITLE 19, CALIFORNIA CODE OF REGULATIONS, STATE FIRE MARSHALL REGULATIONS
 - H. ADA (AMERICANS WITH DISABILITIES ACT, TITLE III)
 - I. 2019 CALIFORNIA ENERGY CODE
 - J. 2019 CALIFORNIA GREEN BUILDING STANDARDS CODE
- CHANGES TO THE APPROVED DRAWINGS AND SPECIFICATIONS SHALL BE MADE BY ADDENDA OR A CHANGE ORDER APPROVED BY THE ARCHITECT.
- ALL EXTERIOR SIGNS SHALL BE BY SEPARATE BUILDING PERMIT.
- AN ACCEPTANCE TESTING REPORT SHALL BE SUBMITTED TO THE COUNTY TO ENSURE THAT INSTALLED EQUIPMENT (LIGHTING CONTROLS) IS OPERATING AS DESIGNED AND IN COMPLIANCE WITH THE ENERGY STANDARDS.
- EXTERIOR DESIGN ELEMENTS SHALL COMPLY WITH ALL APPLICABLE SECTIONS CHAPTER 7A OF CBC 2016.
- GOVERNING AGENCY SUBMITTAL LOCATION:
CITY OF TULARE, Building Division
411 East Kern Ave
Tulare, CA 93274
PHONE: (559) 684-4217

Code Analysis

FIRE RESISTANCE RATING	
2019 CBC TABLE 601	
STRUCTURAL FRAME	1 HR
BEARING WALLS, EXTERIOR	2 HR
BEARING WALLS, INTERIOR	1 HR
NON-BEARING WALLS, EXTERIOR	SEE TABLE 602
NON-BEARING WALLS, INTERIOR	0 HR
FLOOR CONSTRUCTION	1 HR
ROOF CONSTRUCTION	1 HR
ALLOWABLE HEIGHT & BUILDING AREA	
2019 CBC TABLE 506.2	
TYPE OF CONSTRUCTION	IIIA - Non-Sprinkler
FIRST FLOOR: B Occupancy	
ALLOWABLE # OF STORIES	5 STORY
ALLOWABLE HEIGHT	65'-0"
BASIC ALLOWABLE AREA	B = 28,500 SF
EXISTING # OF STORIES	2 STORY - OK
EXISTING BUILDING HEIGHT	±37'-10" - OK
EXISTING TOTAL BUILDING AREA	24,000 SF - OK
SECOND FLOOR: R-2 Occupancy	
ALLOWABLE # OF STORIES	4 STORY
ALLOWABLE HEIGHT	65'-0"
BASIC ALLOWABLE AREA	B = 24,000 SF
EXISTING # OF STORIES	2 STORY - OK
EXISTING BUILDING HEIGHT	±37'-10" - OK
EXISTING TOTAL BUILDING AREA	24,000 SF - OK

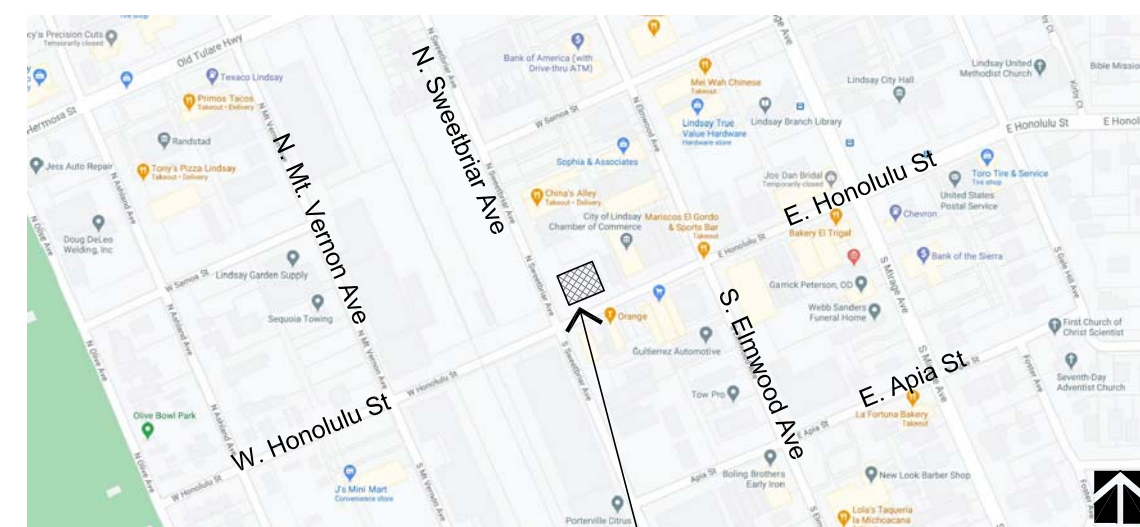
Drawing Index

ARCHITECTURE	
A0.0	GENERAL INFORMATION SHEET
A2.0	BASEMENT LEVEL FLOOR PLAN
A2.1	FIRST LEVEL FLOOR PLAN
A2.2	SECOND LEVEL FLOOR PLAN
A3.1	EXTERIOR ELEVATIONS

Project Team

OWNER	
Chester Lew	
321 E. Poplar Ave	
San Mateo, CA 94401	
Contact: (650) 773-2713	
Email: chestercleaner@aol.com	
ARCHITECT	
Baesemann's Architectural Design & Build	
2135 East Kern Ave	
Tulare, CA 93274	
(559) 331-0721	
Contact: Lisa Baesemann, Architect, LEED BD&C	
Email: lbaesem@gmail.com	

Vicinity Map

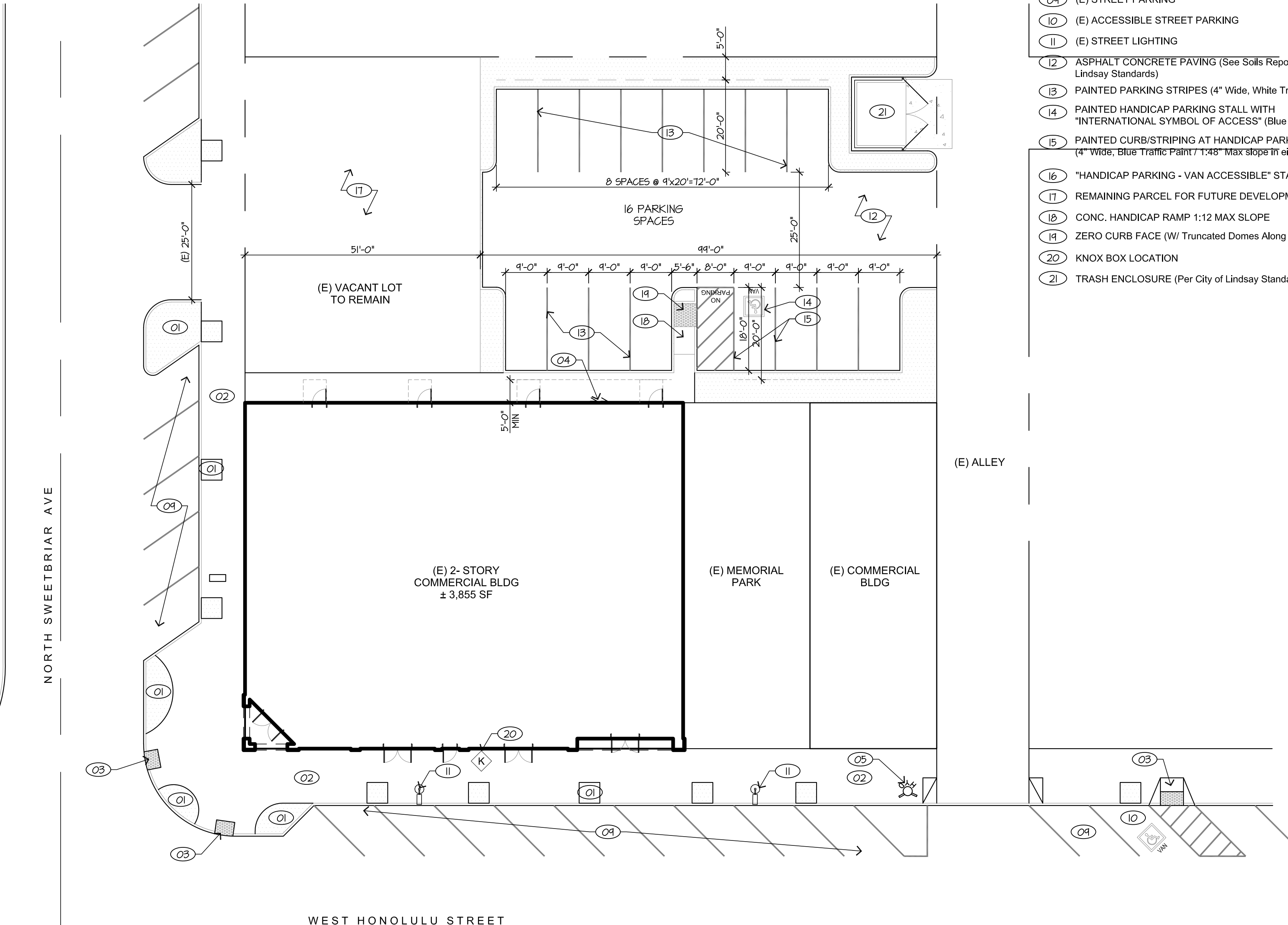


Project Description

PROJECT SCOPE
AN EXISTING ±21,375 SF 2-STORY (with Basement) COMMERCIAL BUILDING OF UN-REINFORCED MASONRY CONSTRUCTION TO BE RECONSTRUCTED / REMODELED TO HOUSE (4) RETAIL SHELL SPACES AT THE FIRST FLOOR LEVEL (with access to each own's Basement Level) AND (8) RESIDENTIAL APARTMENT UNITS AT THE SECOND FLOOR LEVEL. THE BUILDING IS OF TYPE III-A CONSTRUCTION, NON SPRINKLERED.

Site Summary

SITE ADDRESS:	185 West Honolulu Street
APN:	205-282-013
ZONING:	CC - Central Commercial
TOTAL LOT AREA:	7,125 SF / 12.77 Acres
BUILDING AREA:	21,375 SF
PARKING ANALYSIS	
EXISTING PARKING PROVIDED:	12 SPACES (1 ACCESSIBLE STALL)



1 EXISTING SITE PLAN
IMPORTANT: THIS SITE PLAN IS PURELY SCHEMATIC AND HAS BEEN PROVIDED WITHOUT THE BENEFIT OF A BOUNDARY SURVEY AND/OR TITLE REPORT.

SITE PLAN KEYNOTES

- KEYNOTES LISTED BELOW PERTAIN TO THE PLANS ON THIS SHEET ONLY.
- | NO. | DESCRIPTION |
|-----|--|
| 01 | (E) LANDSCAPING |
| 02 | (E) SIDEWALK |
| 03 | (E) ACCESSIBLE RAMP |
| 04 | (E) ELECTRICAL PANEL |
| 05 | (E) PUBLIC FIRE HYDRANT |
| 06 | (E) GAS METER LOCATION |
| 07 | SYMBOL OF ACCESSIBILITY AT THE PRIMARY BUILDING ENTRANCE |
| 08 | ACCESSIBLE PATH OF TRAVEL |
| 09 | (E) STREET PARKING |
| 10 | (E) ACCESSIBLE STREET PARKING |
| 11 | (E) STREET LIGHTING |
| 12 | ASPHALT CONCRETE PAVING (See Soils Report & City of Lindsay Standards) |
| 13 | PAINTED PARKING STRIPES (4" Wide, White Traffic Paint) |
| 14 | PAINTED HANDICAP PARKING STALL WITH "INTERNATIONAL SYMBOL OF ACCESS" (Blue Traffic Paint) |
| 15 | PAINTED CURB/STRIPING AT HANDICAP PARKING SPACES (4" Wide, Blue Traffic Paint 1:48" Max Slope in either direction) |
| 16 | "HANDICAP PARKING - VAN ACCESSIBLE" STALL SIGN |
| 17 | REMAINING PARCEL FOR FUTURE DEVELOPMENT |
| 18 | CONC. HANDICAP RAMP 1:12 MAX SLOPE |
| 19 | ZERO CURB FACE (W/ Truncated Domes Along Entire Width & Depth) |
| 20 | KNOX BOX LOCATION |
| 21 | TRASH ENCLOSURE (Per City of Lindsay Standards) |

Symbols

	ROOM NUMBER		DOOR SYMBOL (Refer To Door Schedule)
	ROOM NAME DESIGNATION		PROVIDE PANIC HARDWARE (Refer To Floor Plan)
	INTERIOR ELEVATION SHT. #		WINDOW SYMBOL (Refer To Window Schedule)
	SECTION		KEYNOTE SYMBOL (Refer To Keynotes)
	BUILDING SECTION SYMBOL		BUILDING GRID LINE
	SHEET NO.		ELEVATION SYMBOL (Refer To Interior Elevations)
	DETAIL SYMBOL (Refer To Detail Manual)		

The drawings, specifications, ideas, designs & arrangements represented herein are the property of BAESEMANN'S DESIGN & BUILD. No part of these drawings shall be reproduced, copied, electronically transmitted, modified or altered in any way without the written consent of the project owner. This project is for the specific project for which they have been prepared & do not constitute a contract, without the written consent of BAESEMANN'S DESIGN & BUILD.

DESIGN BAESEMANN'S BUILD
Phone (559) 331-0721
barchdb@gmail.com
Tulare, CA 93274
CA License # 1066367

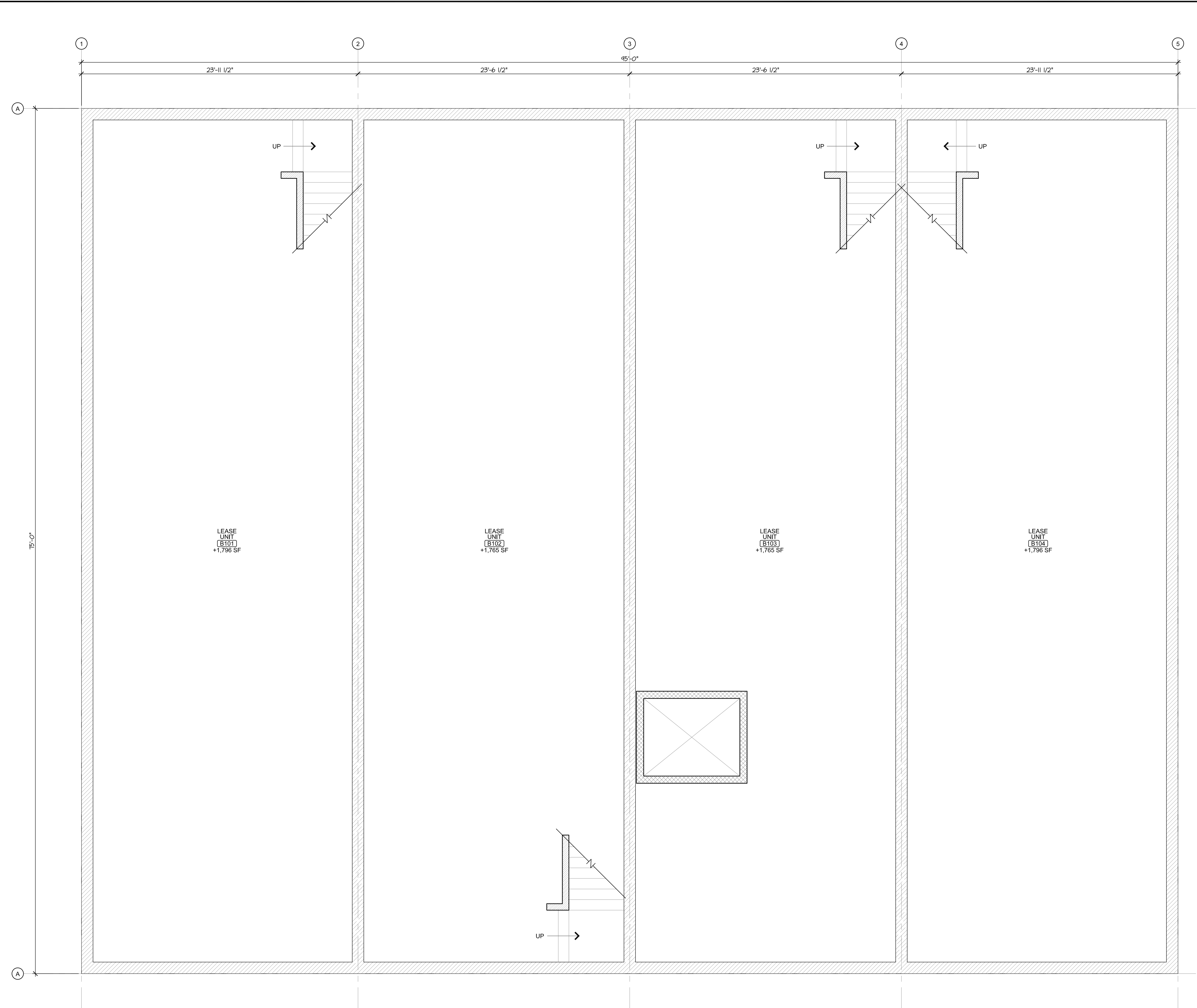
Project
Honolulu 2-Story Commercial Remodel / Reconstruction
185 West Honolulu Street
Lindsay, CA 93247

Revisions	
Issue	03/17/21 CUP Submittal

Sheet Title
General Information

Job Number
20-064
Sheet Number

A0.0



GENERAL FLOOR PLAN NOTES

- DO NOT SCALE THE DRAWINGS. LARGER SCALE PLANS TAKE PRECEDENCE OVER SMALLER SCALE PLANS. IF DRAWING DIMENSIONS CONFLICT, NOTIFY THE ARCHITECT PRIOR TO PROCEEDING.
- PROVIDE SOLID BLOCKING OR SUITABLE BACKING MATERIAL BEHIND GYPSUM BOARD FOR ATTACHMENT OF ALL FIXTURES, FITTINGS, ARTWORK AND ACCESSORIES.
- EXTERIOR JOINTS AROUND WINDOWS AND DOOR FRAMES, OPENINGS BETWEEN WALLS; OPENINGS AT PENETRATIONS OF UTILITY SERVICES THROUGH WALLS, FLOORS AND ROOF; AND ALL OTHER OPENINGS IN THE BUILDING ENVELOPE SHALL BE PROPERLY SEALED, CAULKED, GASKETED OR WEATHERSTRIPPED TO LIMIT AIR LEAKAGE.
- EXISTING EXIT DOOR AT MAIN ENTRY. TO HAVE SIGN ABOVE DOOR. THIS DOOR TO REMAIN UNLOCKED WHEN SPACE IS OCCUPIED.

WALL LEGEND

	(E) EXTERIOR CONCRETE BEARING WALL
	(E) 12" UN-REINFORCED MASONRY WALL
	(E) INTERIOR WALL - NON-BEARING TO BE REMOVED
	NEW INTERIOR WALL - NON-BEARING 2" x 4" WD STUDS @ 16" O.C., WITH 1/2" GYP. BD. BOTH SIDES, TAPED AND SANDED.
	NEW INTERIOR WALL - NON-BEARING 2" x 6" WD STUDS @ 16" O.C., WITH 1/2" GYP. BD. BOTH SIDES, TAPED AND SANDED.

FLOOR PLAN KEYNOTES

KEYNOTES LISTED BELOW PERTAIN TO THE PLANS ON THIS SHEET ONLY:

No.	DESCRIPTION
01	SIGN OVER THIS DOOR - "THIS DOOR TO REMAIN UNLOCKED WHEN SPACE IS OCCUPIED"
02	SYMBOL OF ACCESSIBILITY AT THE PRIMARY BUILDING ENTRANCE
03	TYPE K FIRE EXTINGUISHER WALL MOUNTED
04	ELECTRICAL SUB PANEL BOARDS
05	TANKLESS WATER HEATER LOCATED ABOVE DROP CEILING

LEGEND

SYMBOL	DESCRIPTION
000	ROOM NUMBER
	EXISTING WINDOW TO REMAIN
	EXISTING DOOR TO REMAIN
	DOOR NUMBER (SEE SHEET A7.1 FOR DR SCH)
	WINDOW TAG (SEE SHEET A7.1 FOR SCH)
	CEILING-MOUNTED ILLUMINATED EXIT SIGN.
	WALL-MOUNTED ILLUMINATED EXIT SIGN.
	EMERGENCY LIGHT
	ELEC PANEL BOARD

The drawings, specifications, ideas, designs & arrangements represented herein are the property of BAESEMANNS DESIGN & BUILD. No part of these drawings shall be reproduced, copied, electronically transmitted, modified or altered or used in connection with any work or project other than the specific project for which they have been prepared & provided, without the written consent of BAESEMANNS DESIGN & BUILD.

DESIGN BAESEMANNS BUILD

Tulare, CA 93274
CA License # 1063367

Phone (559) 331-0721
burchid@gmail.com

Project
Honolulu 2-Story Commercial Remodel / Reconstruction
185 West Honolulu Street
Lindsay, CA 93247

Revisions

Issue	Date	Description
01/21/21	CUP Submittal	

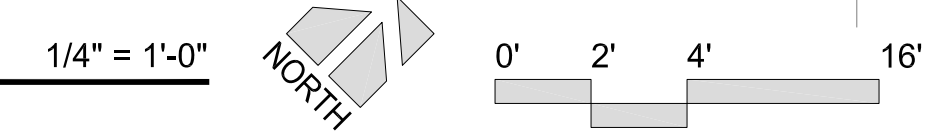
Sheet Title
Basement Level Floor Plan

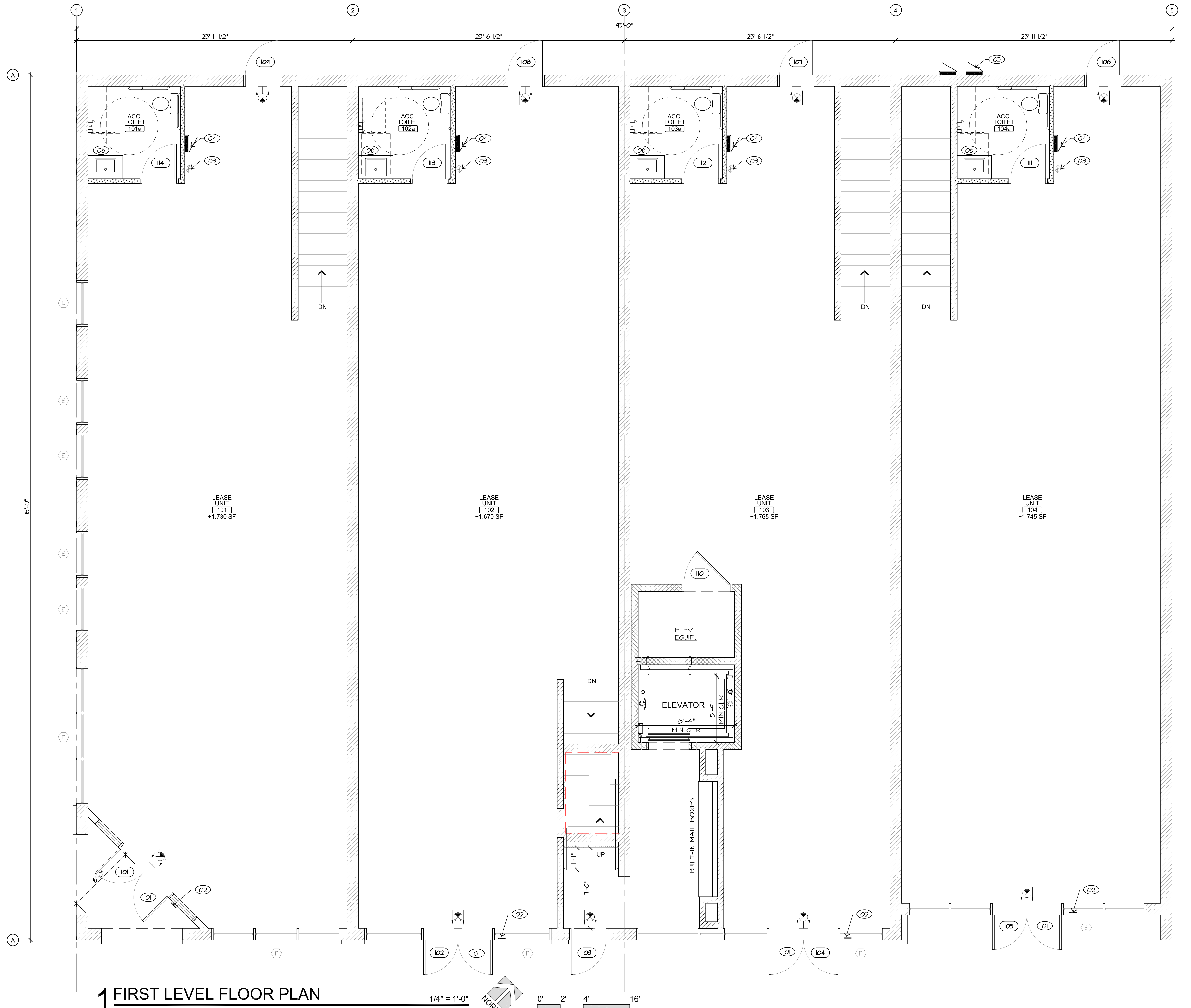
Job Number
20-064

Sheet Number

A2.0

1 BASEMENT LEVEL FLOOR PLAN





GENERAL FLOOR PLAN NOTES

- DO NOT SCALE THE DRAWINGS. LARGER SCALE PLANS TAKE PRECEDENCE OVER SMALLER SCALE PLANS. IF DRAWING DIMENSIONS CONFLICT, NOTIFY THE ARCHITECT PRIOR TO PROCEEDING.
- PROVIDE SOLID BLOCKING OR SUITABLE BACKING MATERIAL BEHIND GYPSUM BOARD FOR ATTACHMENT OF ALL FIXTURES, FITTINGS, ARTWORK AND ACCESSORIES.
- EXTERIOR JOINTS AROUND WINDOWS AND DOOR FRAMES, OPENINGS BETWEEN WALLS; OPENINGS AT PENETRATIONS OF UTILITY SERVICES THROUGH WALLS, FLOORS AND ROOF; AND ALL OTHER OPENINGS IN THE BUILDING ENVELOPE SHALL BE PROPERLY SEALED, CAULKED, GASKETED OR WEATHERSTRIPPED TO LIMIT AIR LEAKAGE.
- EXISTING EXIT DOOR AT MAIN ENTRY. TO HAVE SIGN ABOVE DOOR. THIS DOOR TO REMAIN UNLOCKED WHEN SPACE IS OCCUPIED.

WALL LEGEND

- (E) EXTERIOR CONCRETE BEARING WALL
- (E) 12" UN-REINFORCED MASONRY WALL
- (E) INTERIOR WALL - NON-BEARING TO BE REMOVED
- NEW INTERIOR WALL - NON-BEARING 2" x 4" WD STUDS @ 16" O.C., WITH 1/2" GYP. BD. BOTH SIDES, TAPED AND SANDED.
- NEW INTERIOR WALL - NON-BEARING 2" x 6" WD STUDS @ 16" O.C., WITH 1/2" GYP. BD. BOTH SIDES, TAPED AND SANDED.

FLOOR PLAN KEYNOTES

- KEYNOTES LISTED BELOW PERTAIN TO THE PLANS ON THIS SHEET ONLY:
- | No. | DESCRIPTION |
|-----|---|
| 01 | SIGN OVER THIS DOOR - "THIS DOOR TO REMAIN UNLOCKED WHEN SPACE IS OCCUPIED" |
| 02 | SYMBOL OF ACCESSIBILITY AT THE PRIMARY BUILDING ENTRANCE |
| 03 | TYPE K FIRE EXTINGUISHER WALL MOUNTED |
| 04 | ELECTRICAL SUB PANEL BOARDS |
| 05 | (E) ELECTRICAL SERVICE PANELS |
| 06 | TANKLESS WATER HEATER LOCATED ABOVE DROP CEILING |

LEGEND

- | SYMBOL | DESCRIPTION |
|--------|---|
| 000 | ROOM NUMBER |
| E | EXISTING WINDOW TO REMAIN |
| E | EXISTING DOOR TO REMAIN |
| O | DOOR NUMBER (SEE SHEET A7.1 FOR DR SCH) |
| E | WINDOW TAG (SEE SHEET A7.1 FOR SCH) |
| ⊗ | CEILING-MOUNTED ILLUMINATED EXIT SIGN. |
| ⊗ | WALL-MOUNTED ILLUMINATED EXIT SIGN. |
| ⊗ | EMERGENCY LIGHT |
| ⊗ | ELEC PANEL BOARD |

DESIGN
DAESEMANN'S
BUILD

Phone (559) 331-0721
burchid@gmail.com

Tulare, CA 93274
CA License # 1063367

Project
Honolulu 2-Story Commercial Remodel / Reconstruction
185 West Honolulu Street
Lindsay, CA 93247

Revisions

Issue
01/21/21 CUP Submittal

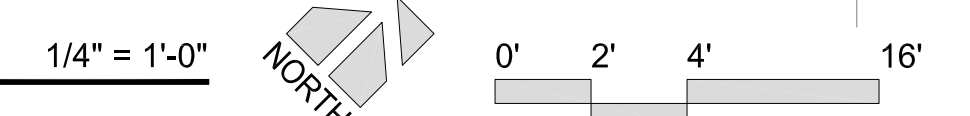
Sheet Title
First Level Floor Plan

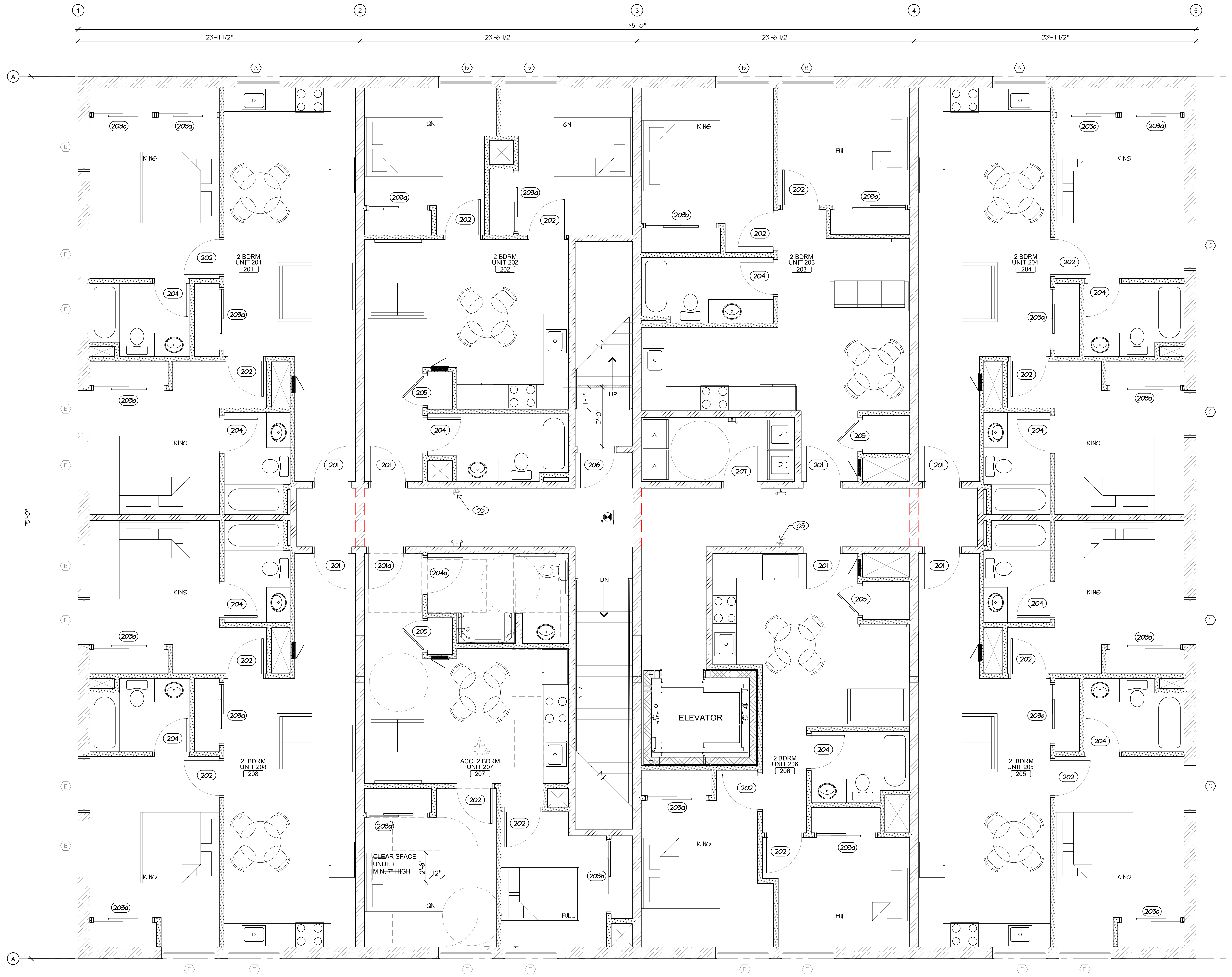
Job Number
20-064

Sheet Number

A2.1

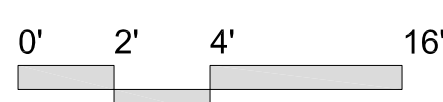
1 FIRST LEVEL FLOOR PLAN





1 SECOND LEVEL FLOOR PLAN

1/4" = 1'-0"



GENERAL FLOOR PLAN NOTES

- DO NOT SCALE THE DRAWINGS. LARGER SCALE PLANS TAKE PRECEDENCE OVER SMALLER SCALE PLANS. IF DRAWING DIMENSIONS CONFLICT, NOTIFY THE ARCHITECT PRIOR TO PROCEEDING.
- PROVIDE SOLID BLOCKING OR SUITABLE BACKING MATERIAL BEHIND GYPSUM BOARD FOR ATTACHMENT OF ALL FIXTURES, FITTINGS, ARTWORK AND ACCESSORIES.
- EXTERIOR JOINTS AROUND WINDOWS AND DOOR FRAMES, OPENINGS BETWEEN WALLS; OPENINGS AT PENETRATIONS OF UTILITY SERVICES THROUGH WALLS, FLOORS AND ROOF; AND ALL OTHER OPENINGS IN THE BUILDING ENVELOPE SHALL BE PROPERLY SEALED, CAULKED, GASKETED OR WEATHERSTRIPPED TO LIMIT AIR LEAKAGE.
- EXISTING EXIT DOOR AT MAIN ENTRY. TO HAVE SIGN ABOVE DOOR. THIS DOOR TO REMAIN UNLOCKED WHEN SPACE IS OCCUPIED.

WALL LEGEND

- (E) EXTERIOR CONCRETE BEARING WALL
- (E) 12" UN-REINFORCED MASONRY WALL
- (E) INTERIOR WALL - NON-BEARING TO BE REMOVED
- NEW INTERIOR WALL - NON-BEARING 2" x 4" WD STUDS @ 16" O.C., WITH 1/2" GYP. BD. BOTH SIDES, TAPED AND SANDED.
- NEW INTERIOR WALL - NON-BEARING 2" x 6" WD STUDS @ 16" O.C., WITH 1/2" GYP. BD. BOTH SIDES, TAPED AND SANDED.

FLOOR PLAN KEYNOTES

KEYNOTES LISTED BELOW PERTAIN TO THE PLANS ON THIS SHEET ONLY:

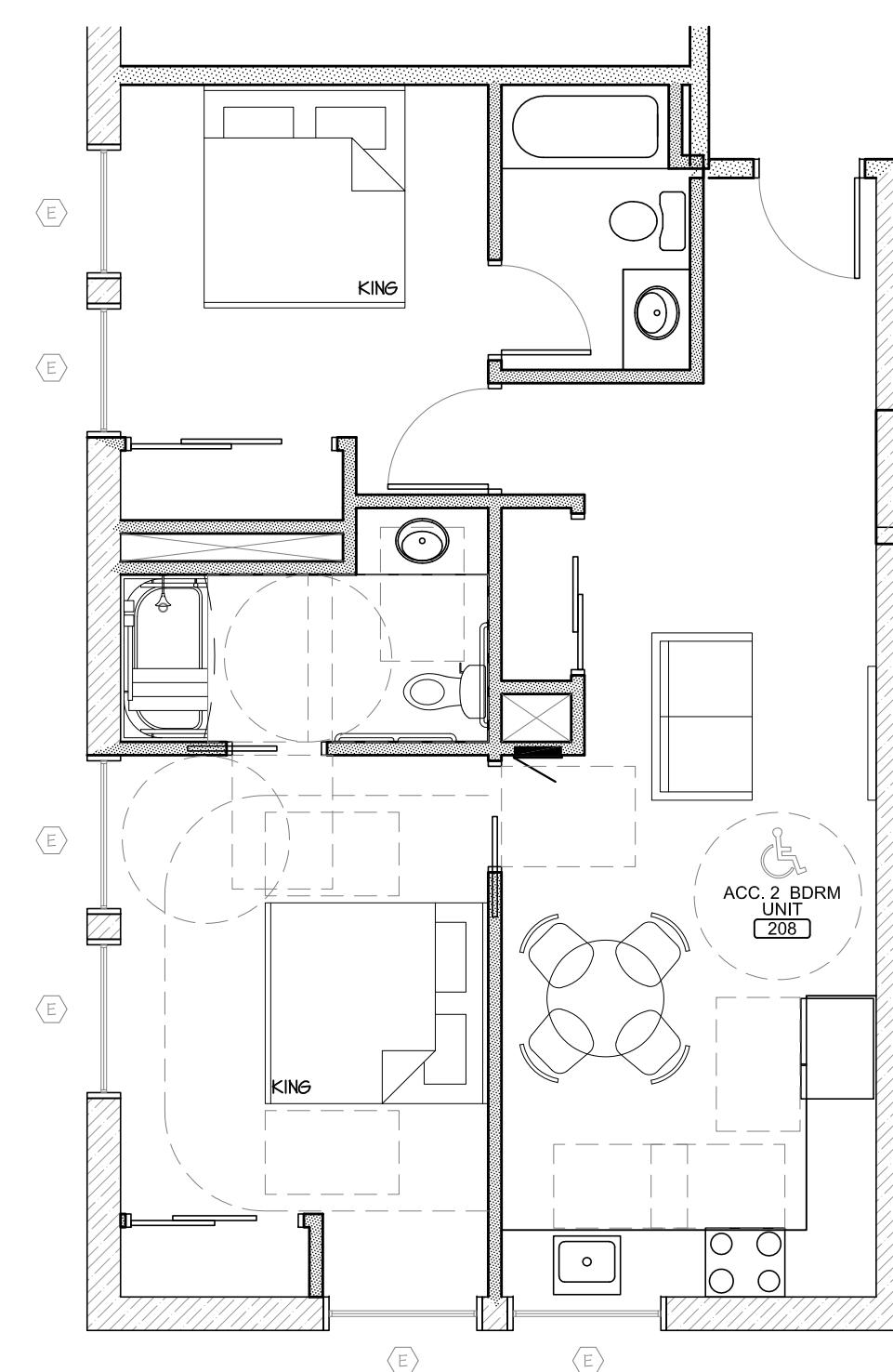
- | No. | DESCRIPTION |
|-----|---|
| 01 | SIGN OVER THIS DOOR - "THIS DOOR TO REMAIN UNLOCKED WHEN SPACE IS OCCUPIED" |
| 02 | SYMBOL OF ACCESSIBILITY AT THE PRIMARY BUILDING ENTRANCE |
| 03 | TYPE K FIRE EXTINGUISHER WALL MOUNTED |
| 04 | ELECTRICAL SUB PANEL BOARDS |
| 05 | TANKLESS WATER HEATER LOCATED ABOVE DROP CEILING |

LEGEND

- | SYMBOL | DESCRIPTION |
|--------|---|
| 000 | ROOM NUMBER |
| | EXISTING WINDOW TO REMAIN |
| | EXISTING DOOR TO REMAIN |
| | DOOR NUMBER (SEE SHEET A7.1 FOR DR SCH) |
| | WINDOW TAG (SEE SHEET A7.1 FOR SCH) |
| | CEILING-MOUNTED ILLUMINATED EXIT SIGN. |
| | WALL-MOUNTED ILLUMINATED EXIT SIGN. |
| | EMERGENCY LIGHT |
| | ELEC PANEL BOARD |

02. ACC. 2 BATH UNIT OPTION

3/16" = 1'-0"



The drawings, specifications, ideas, designs & arrangements represented herein are the property of DAASEMANN'S BUILD. No part of these drawings shall be reproduced, copied, electronically transmitted, modified or altered or used in connection with any work or project other than the specific project for which they have been prepared & designed, without the written consent of DAASEMANN'S DESIGN & BUILD.

DESIGN DAASEMANN'S BUILD
 Phone (530) 331-0721
 burchd@bigmail.com
 Tulare, CA 93274
 CA License # 1063367

Project
Honolulu 2-Story Commercial Remodel / Reconstruction
 185 West Honolulu Street
 Lindsay, CA 93247

Revisions

Issue	Description
01/21/21	CUP Submittal

Sheet Title
 Second Level Floor Plan

Job Number
20-064

Sheet Number

A2.2

Seal

Project
Honolulu 2-Story Commercial Remodel / Reconstruction
185 West Honolulu Street
Lindsay, CA 93247

Revisions

Issue

01/21/21 CUP Submittal

Sheet Title

Exterior Elevations

Job Number

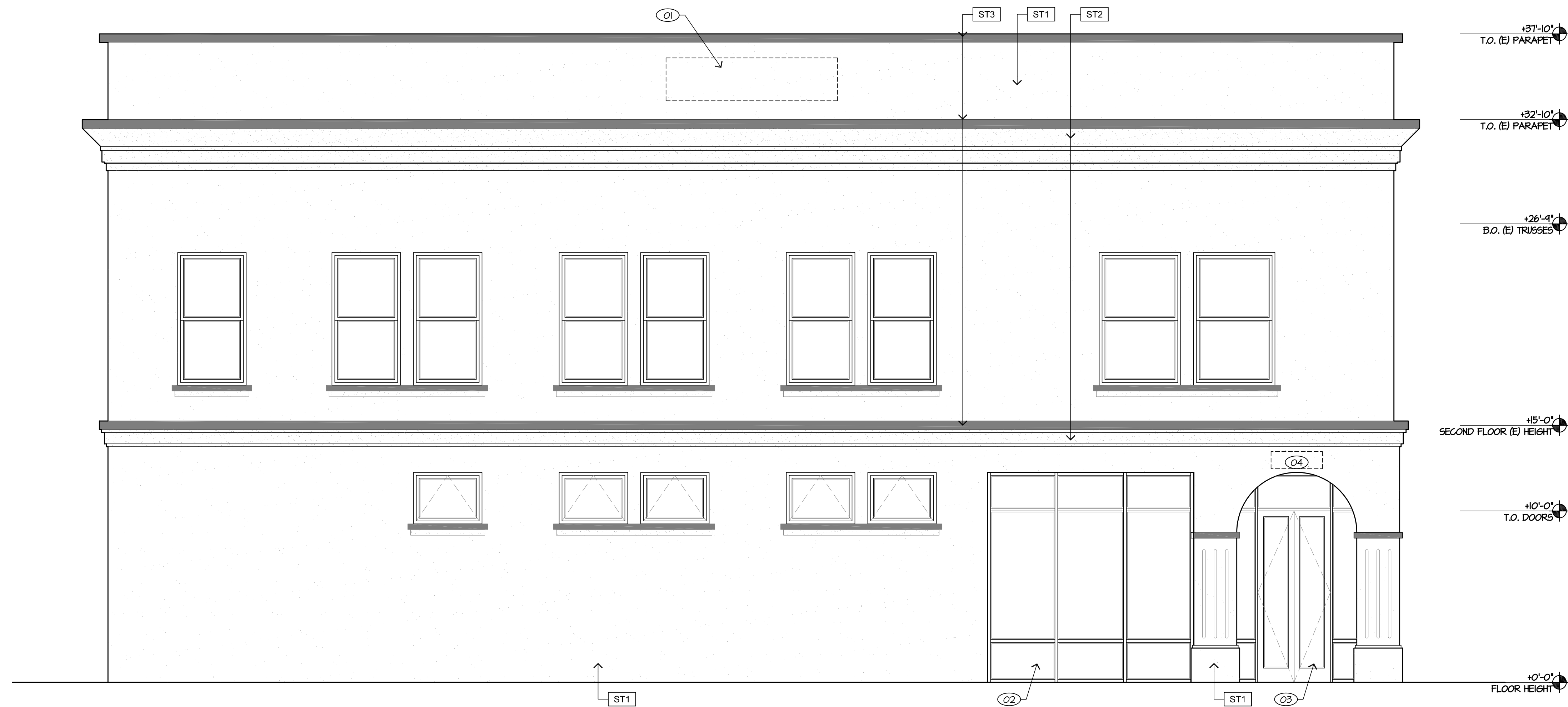
20-064

Sheet Number

A3.1



1 SOUTH ELEVATION - Honolulu Street 1/4" = 1'-0"



2 WEST ELEVATION - Sweetbriar Street 1/4" = 1'-0"

ELEVATION LEGEND

- STC1 EMSER TILE: PORCELAIN TILE 'UPTOWN' HAMILTON 12"x24"
- STC2 3-COAT STUCCO SAND FINISH COLOR: DE6274 FROSTBITE
- STC3 3-COAT STUCCO SAND FINISH COLOR: DE6277 PEBBLE WALK

ELEVATION KEYNOTES

- KEYNOTES LISTED BELOW PERTAIN TO THE PLANS ON THIS SHEET ONLY.
- NO. DESCRIPTION
 - O1 PROVIDE BLOCKING AND POWER FOR EXTERIOR BUILDING SIGNAGE
 - O2 1" INSULATING STOREFRONT GLAZING
 - O3 ALUMINUM STOREFRONT DOOR WITH TEMPERED GLASS
 - O4 12" HIGH ALUMINUM BUILDING ADDRESS SIGN
 - O5 METAL AWNING



A RESOLUTION OF THE CITY COUNCIL OF THE CITY OF LINDSAY

NUMBER 21-09

TITLE A RESOLUTION OF THE CITY COUNCIL OF THE CITY OF LINDSAY APPROVING CONDITIONAL USE PERMIT NO. 20-07, A REQUEST BY CHESTER LEW TO REMODEL AN EXISTING TWO-STORY BUILDING TO INCLUDE COMMERCIAL UNITS ON THE FIRST FLOOR AND EIGHT RESIDENTIAL UNITS ON THE SECOND FLOOR, WITHIN THE CENTRAL COMMERCIAL (CC) ZONING DISTRICT, FOR PROPERTY LOCATED AT 185 WEST HONOLULU STREET (APN 205-282-012 & 013).

MEETING At a regularly scheduled meeting of the City of Lindsay City Council held on April 13, 2021 at 6:00 PM at 251 E. Honolulu Street, Lindsay, CA 93247

WHEREAS, Conditional Use Permit No. 20-07 was filed pursuant to the regulations contained in Ordinance No. 437, the Zoning Ordinance of the City of Lindsay; and

WHEREAS, the City Council of the City of Lindsay, after ten (10) days published notice, did hold a public hearing before said Council on April 13, 2021; and

WHEREAS, Planning Department staff has prepared necessary investigations and prepared a staff report of information bearing upon the conditional use permit application; and

WHEREAS, the project is categorically exempt from the California Environmental Quality Act as the existing facilities,

NOW, THEREFORE, THE CITY COUNCIL OF THE CITY OF LINDSAY DOES HEREBY RESOLVE that the project is exempt from further environmental review pursuant to CEQA Article 19, Section §15301.

NOW, THEREFORE, THE CITY COUNCIL OF THE CITY OF LINDSAY DOES HEREBY FURTHER RESOLVE that the City Council of the City of Lindsay finds that the proposed conditional use permit application is consistent with the provisions of the City of Lindsay Zoning Ordinance (Municipal Code Title 18). Specifically, the application meets all applicable city codes and ordinances, per the requirements of Sections 18.17.030 and 18.17.070.C.

BE IT FURTHER RESOLVED that that the City Council of the City of Lindsay hereby approves Conditional Use Permit Application No. 20-07, subject to the following conditions:



A RESOLUTION OF THE CITY COUNCIL OF THE CITY OF LINDSAY

- SECTION 1. The final plan of development shall be reviewed by the City Services Department to ensure the submittals are in substantial compliance with the proposed site plan, drawings, and all applicable Lindsay Development Standards.
- SECTION 2. A cross access agreement shall be recorded between APN 205-282-012 and 205-282-013 to allow for parking and use of the trash enclosure, to which the City shall be a party to.
- SECTION 3. That all other City codes and ordinances shall apply.

PASSED AND ADOPTED by the City Council of the City of Lindsay as follows:

MEETING DATE	April 13, 2021
MOTION	
SECOND MOTION	
AYES	
ABSENT	
ABSTAIN	
NAYS	

CERTIFICATION OF THE FOREGOING RESOLUTION AS FULL, TRUE, PASSED AND ADOPTED BY THE CITY COUNCIL OF THE CITY OF LINDSAY AS DETAILED.

MAYRA ESPINOZA-MARTINEZ
CITY CLERK

RAMONA CAUDILLO
MAYOR