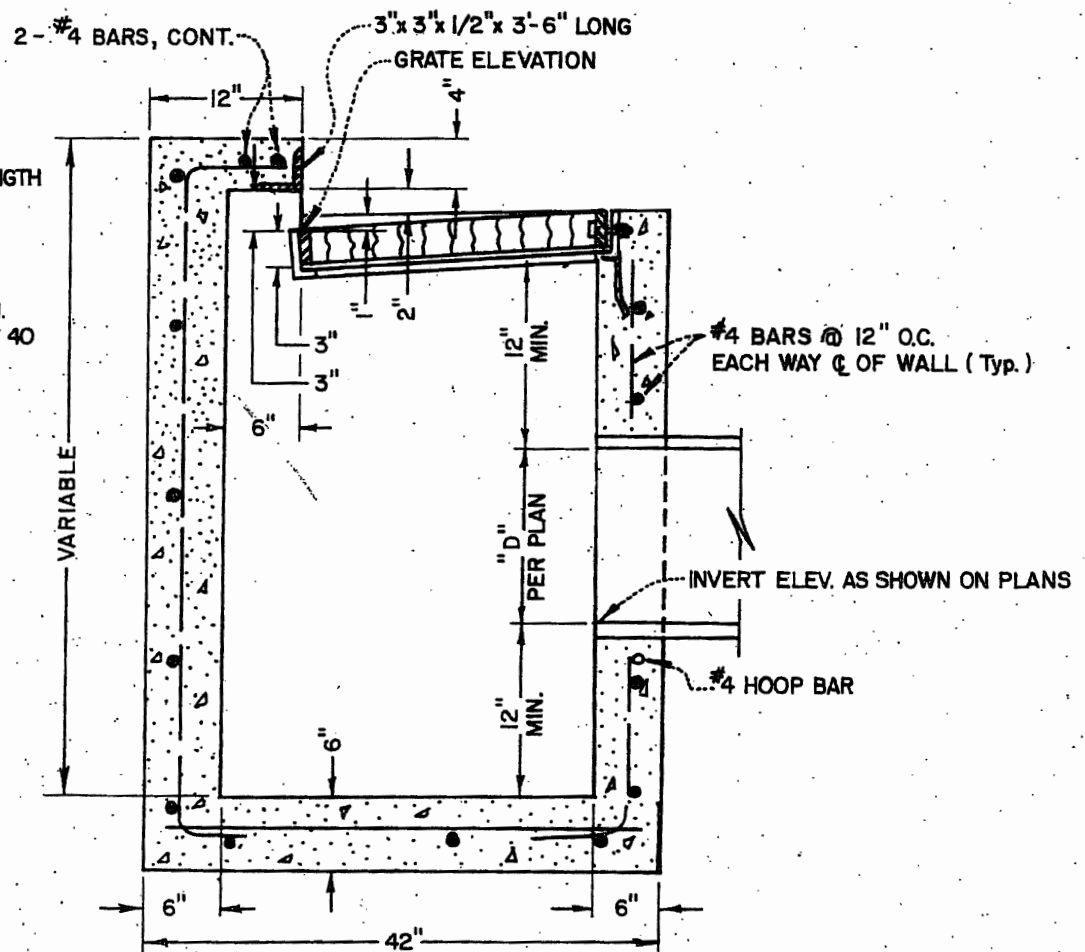


PLAN

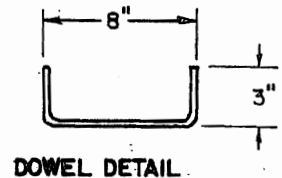
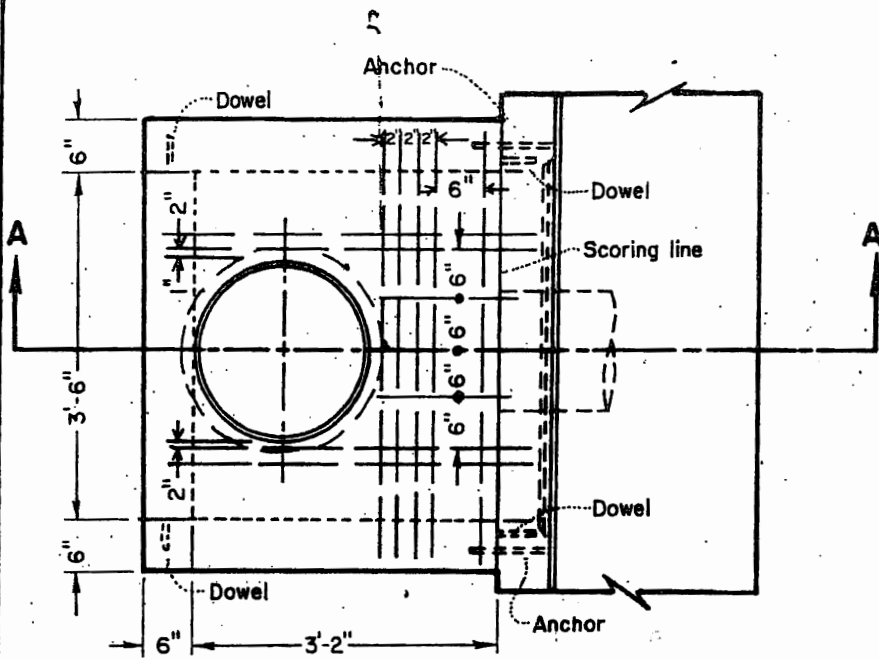
- NOTES:**
1. CONCRETE SHALL REACH A MINIMUM COMPRESSIVE STRENGTH OF 2500 P.S.I. AT 28 DAYS.
 2. ALL REBAR SHALL CONFORM TO A.S.T.M. DESIG. A-615, GRADE 40



SECTION A-A

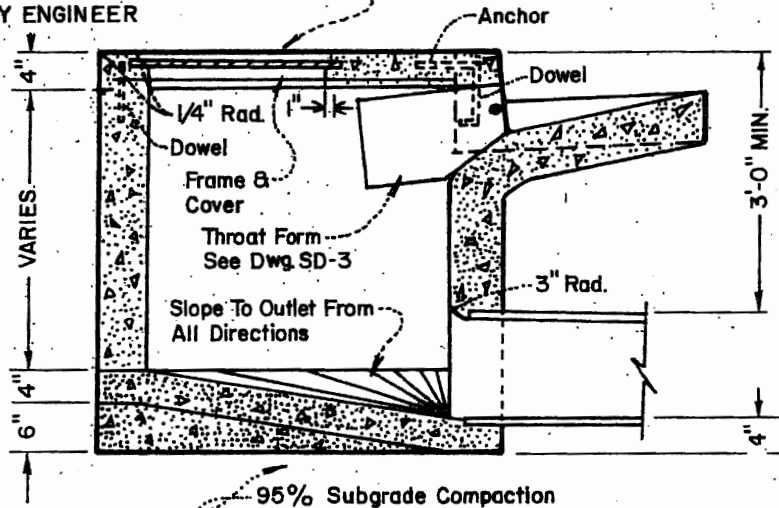
CITY OF <i>Lindsay</i>		DROP INLET	
DEPARTMENT OF PUBLIC WORKS		MARK	DATE
		REVISION	Engineering Standard
			Approved <i>[Signature]</i> SD-1
			Date 9/14/79

Not Noted - Revision



PLAN

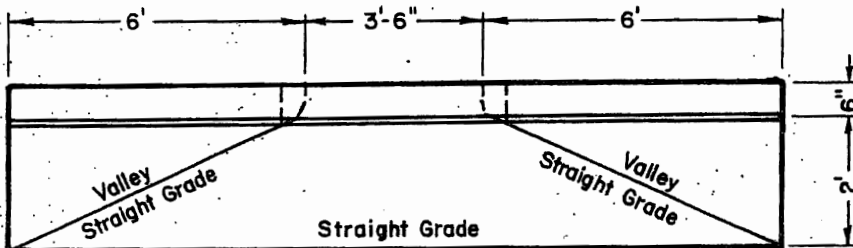
SLOPE 1/4" PER FT. AS DIRECTED BY ENGINEER



SECTION A-A

STEEL LIST	
DESCRIPTION	REQ'D.
3 BARS 4'-4" LONG	5
3 BARS 3'-11" LONG	4
3 BARS 1'-7" LONG	3
DOWEL See Detail	4
ANCHOR 4 1/2", 1/4" WELD	2
FRAME & COVER, Pinkerton A-335 or Equal.	1
FACE ANGLE & THROAT FORM - See Dwg. SD-3	1

CONCRETE SHALL BE 3000 p.s.i.

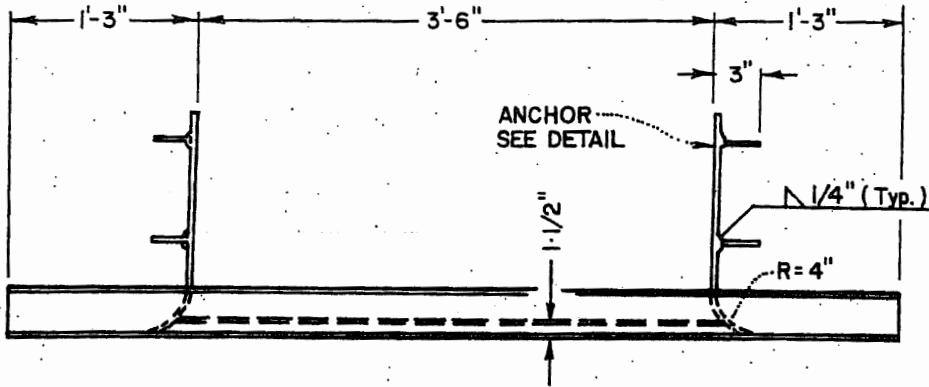


NOTE: WHEN STRUCTURE SERVES AS AN OUTLET, GUTTER GRADE SHALL NOT BE DEPRESSED.

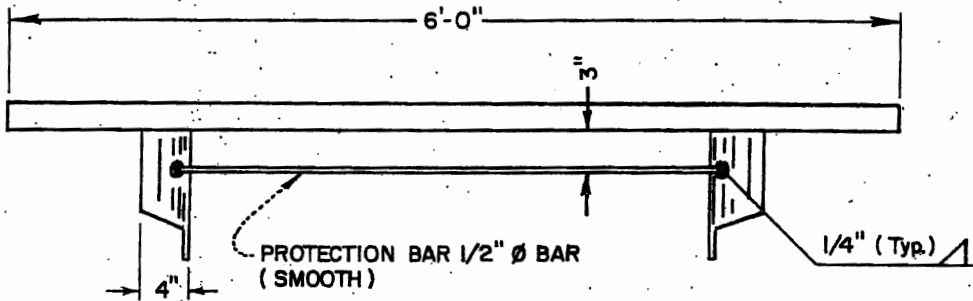
CITY OF *Lindsay*
DEPARTMENT OF PUBLIC WORKS

INLET STRUCTURE

MARK	DATE	REVISION	Engineering Standard	SD-2
			Approved <i>[Signature]</i>	
			Date 9/14/79	



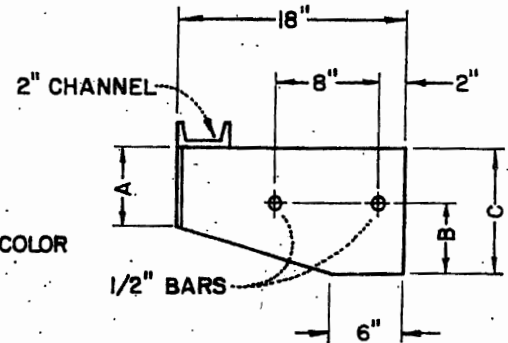
PLAN



ELEVATION

NOTES:

1. ALL DIMENSIONS ARE FINISHED DIMENSIONS.
2. ALL PARTS SHALL BE STRUCTURAL GRADE STEEL UNLESS NOTED OTHERWISE.
3. ALL EXPOSED METAL PARTS PERTAINING TO THROAT FORM SHALL BE PAINTED OR DIPPED WITH AN ALUMINUM COLOR ASPHALTUM PAINT.



ANCHOR DETAIL

DIMENSIONS	A	B	C
INLET BOX	6-5/16"	5"	10"
OUTLET BOX	3-3/16"	2-1/2"	5"

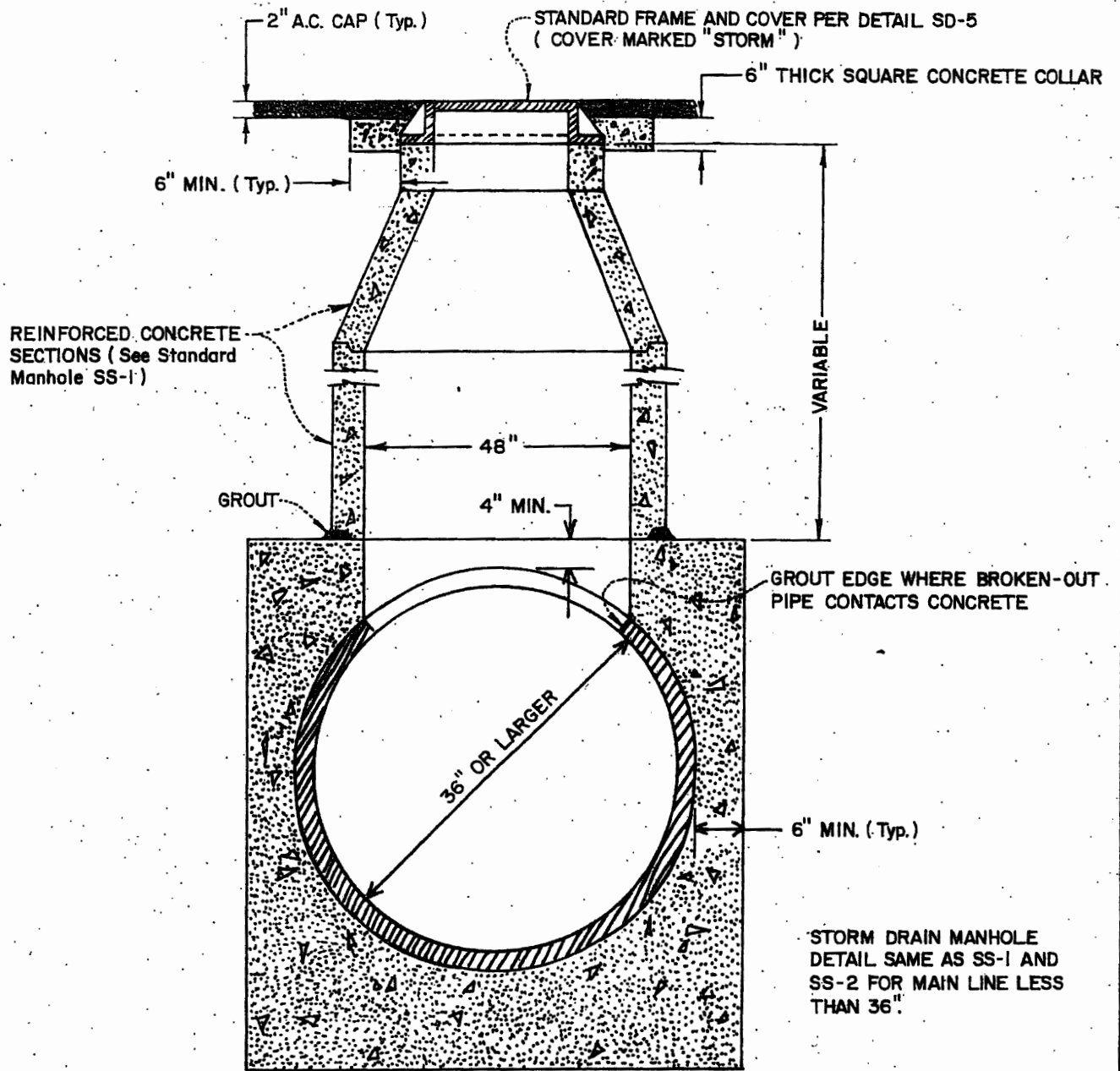
CITY OF *Lindsay*
DEPARTMENT OF PUBLIC WORKS

INLET STRUCTURE STEEL THROAT

MARK	DATE	REVISION

Engineering Standard
Approved *[Signature]*
Date *9/14/79*

SD-3



NOTES:

1. REINFORCED CONCRETE PIPE SECTIONS SHALL MEET REQUIREMENTS OF A.S.T.M. SPECIFICATION C-478-64T.
2. MANHOLE BASE SHALL BE OF CONCRETE CONTAINING 6 SACKS OF PORTLAND CEMENT PER CUBIC YARD.

CITY OF *Lindsay*
DEPARTMENT OF PUBLIC WORKS

STANDARD MANHOLE

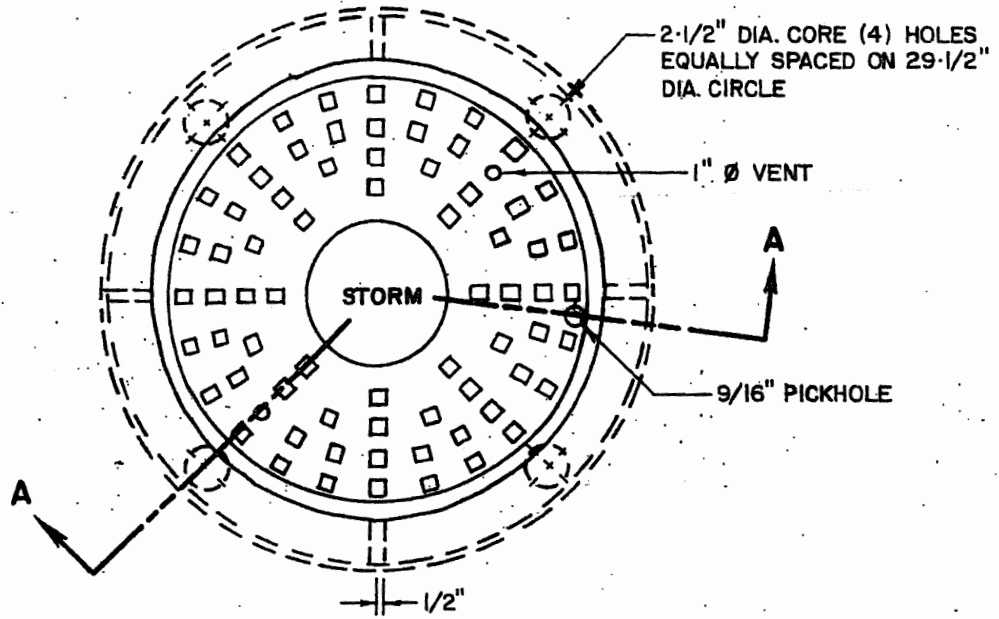
MARK	DATE	REVISION

Engineering Standard

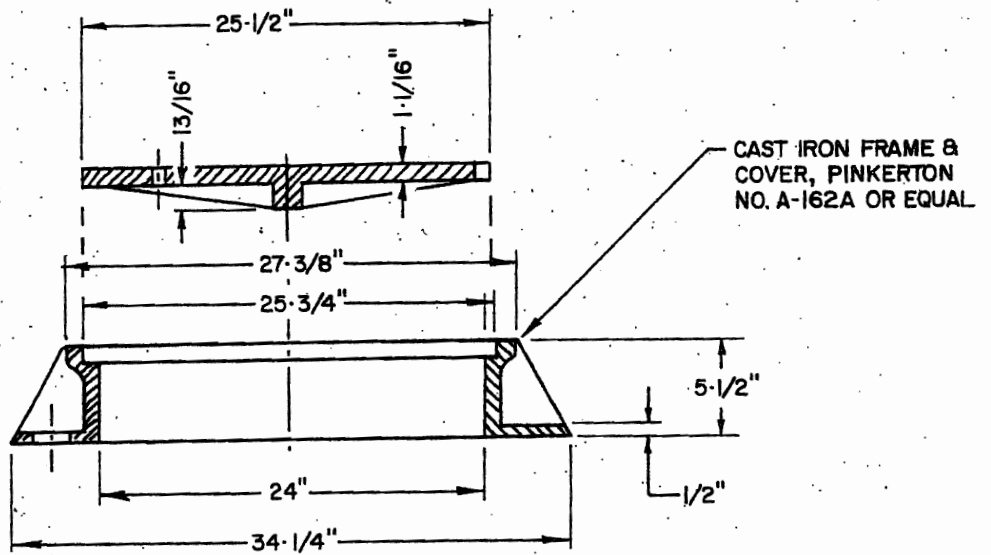
Approved *[Signature]*

Date 9/14/79

SD-4



PLAN VIEW



SECTION A-A

REFERENCE DRAWING
STANDARD MANHOLE..... S-1

CITY OF *Lindsay*
DEPARTMENT OF PUBLIC WORKS

MANHOLE FRAME AND COVER

MARK	DATE	REVISION	Engineering Standard
			Approved <i>James A. [Signature]</i> SD-5
			Date 9/13/79