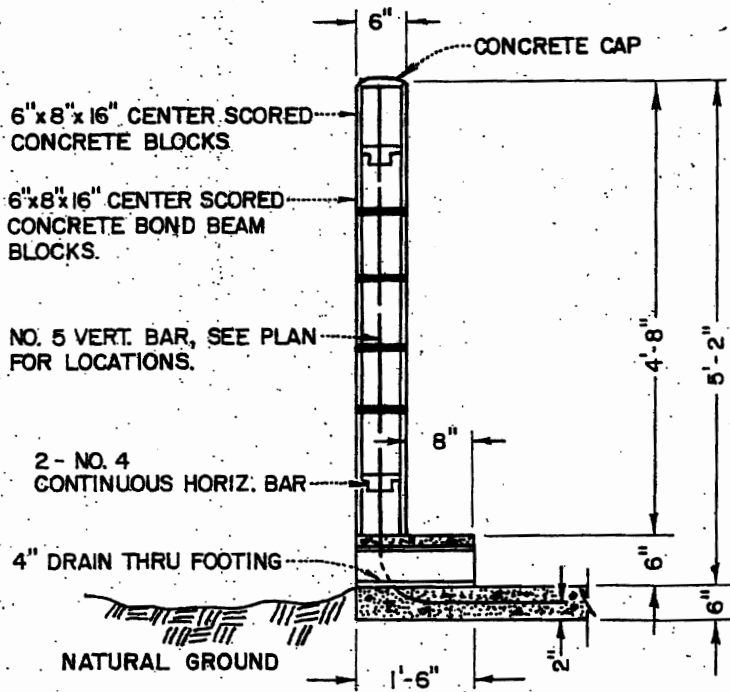


PLAN

SLAB TO BE FLUSH WITH ASPHALT CONCRETE PAVEMENT.



SECTION A-A

NOTES:

1. ALL CELLS IN CONCRETE BLOCKS SHALL BE FILLED SOLID WITH COURSE AGGREGATE GROUT
 2. CORNER BLOCK ENDS AND CENTER WEB SHALL BE BOND BEAM BLOCK
 3. ALL HORIZONTAL & VERTICAL JOINTS SHALL BE RAKED TO MATCH CENTER SCORED BLOCK.
 4. CONCRETE BLOCK, MORTAR AND COARSE GROUT SHALL CONFORM WITH LATEST EDITION OF THE UNIFORM BUILDING CODE.
 5. SLAB FLOOR AND FOOTING SHALL BE 2500psi PORTLAND CEMENT CONCRETE.
 6. GROUND TO BE SLOPED AWAY FROM WALLS.
- THIS STANDARD IS FOR SINGLE 3 c.y. OR SMALLER BINS.

CITY OF *Lindsay*
DEPARTMENT OF PUBLIC WORKS

MASONRY TRASH CONTAINER ENCLOSURE

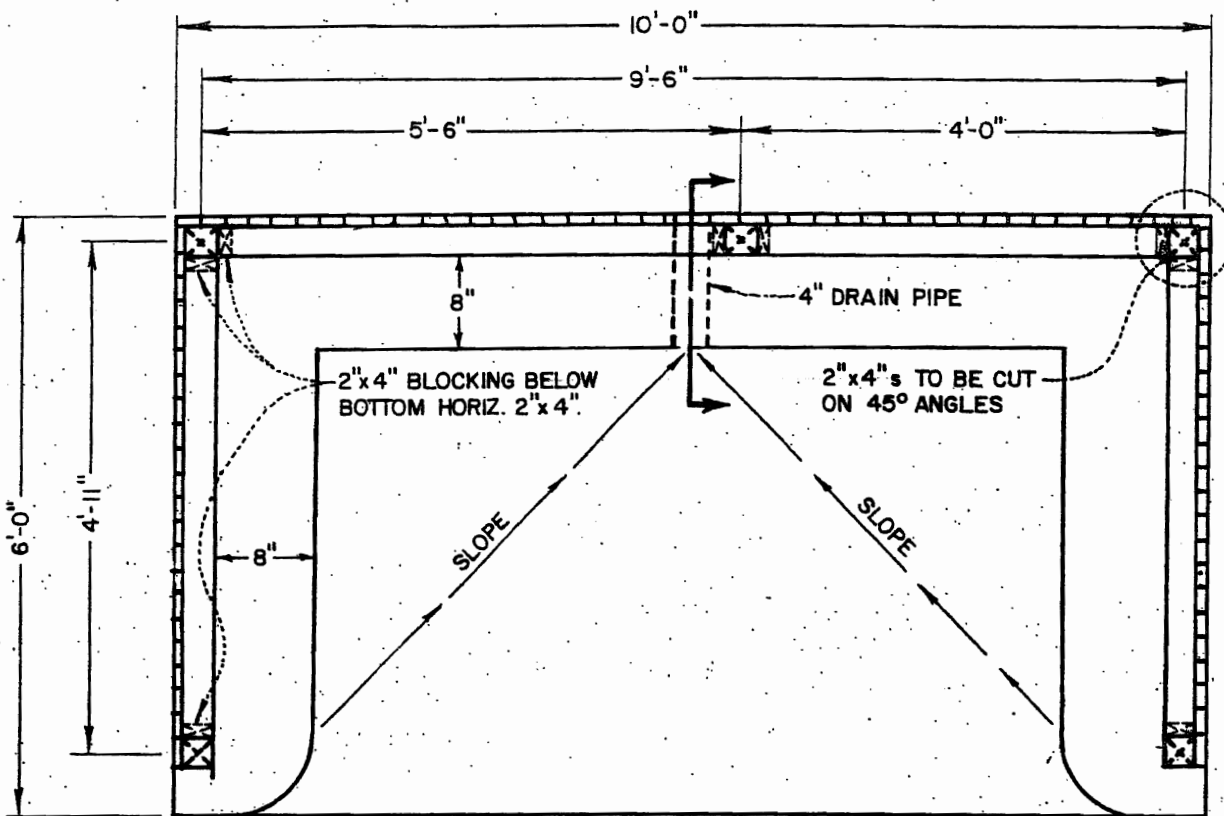
MARK	DATE	REVISION

Engineering Standard

Approved *James J. White*

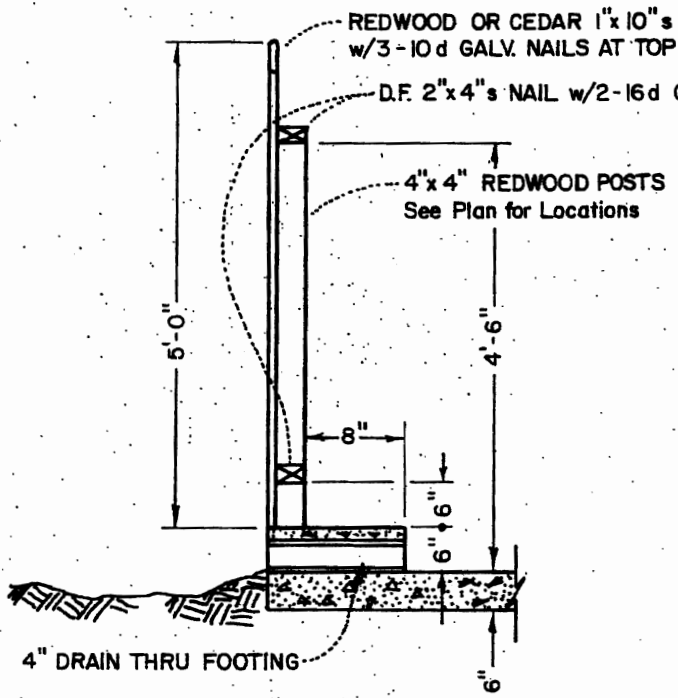
Date 9/14/79

MI-1



PLAN

SLAB TO BE FLUSH WITH ASPHALT OR CONCRETE PAVEMENT.



SECTION A-A

REDWOOD OR CEDAR 1"x10"s OR APPROVED FENCING MATERIAL
w/3-10d GALV. NAILS AT TOP AND BOTTOM.
D.F. 2"x4"s NAIL w/2-16d GALV. NAILS.

4"x4" REDWOOD POSTS
See Plan for Locations

NOTES :

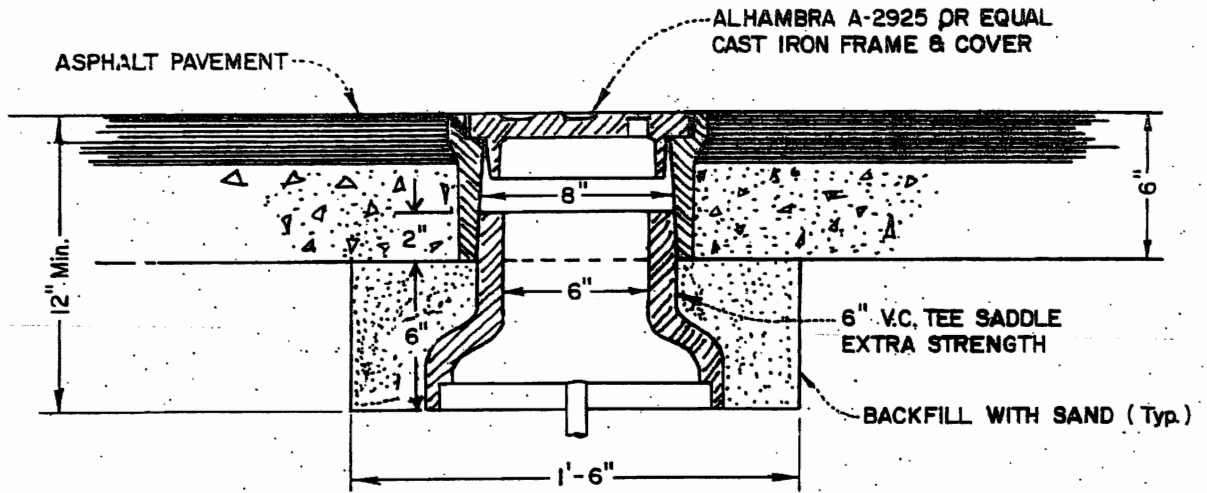
1. SLAB FLOOR AND FOOTINGS SHALL BE 2500psi. DESIGN PORTLAND CEMENT CONCRETE.
 2. 4"x4" REDWOOD POSTS TO BE ANCHORED TO CONCRETE WITH POST SUPPORTS.
 3. GROUND TO BE SLOPED AWAY FROM THE SLAB FOOTING.
- THIS STANDARD IS FOR 3 cy. OR SMALLER BINS.

CITY OF *Lindsay*
DEPARTMENT OF PUBLIC WORKS

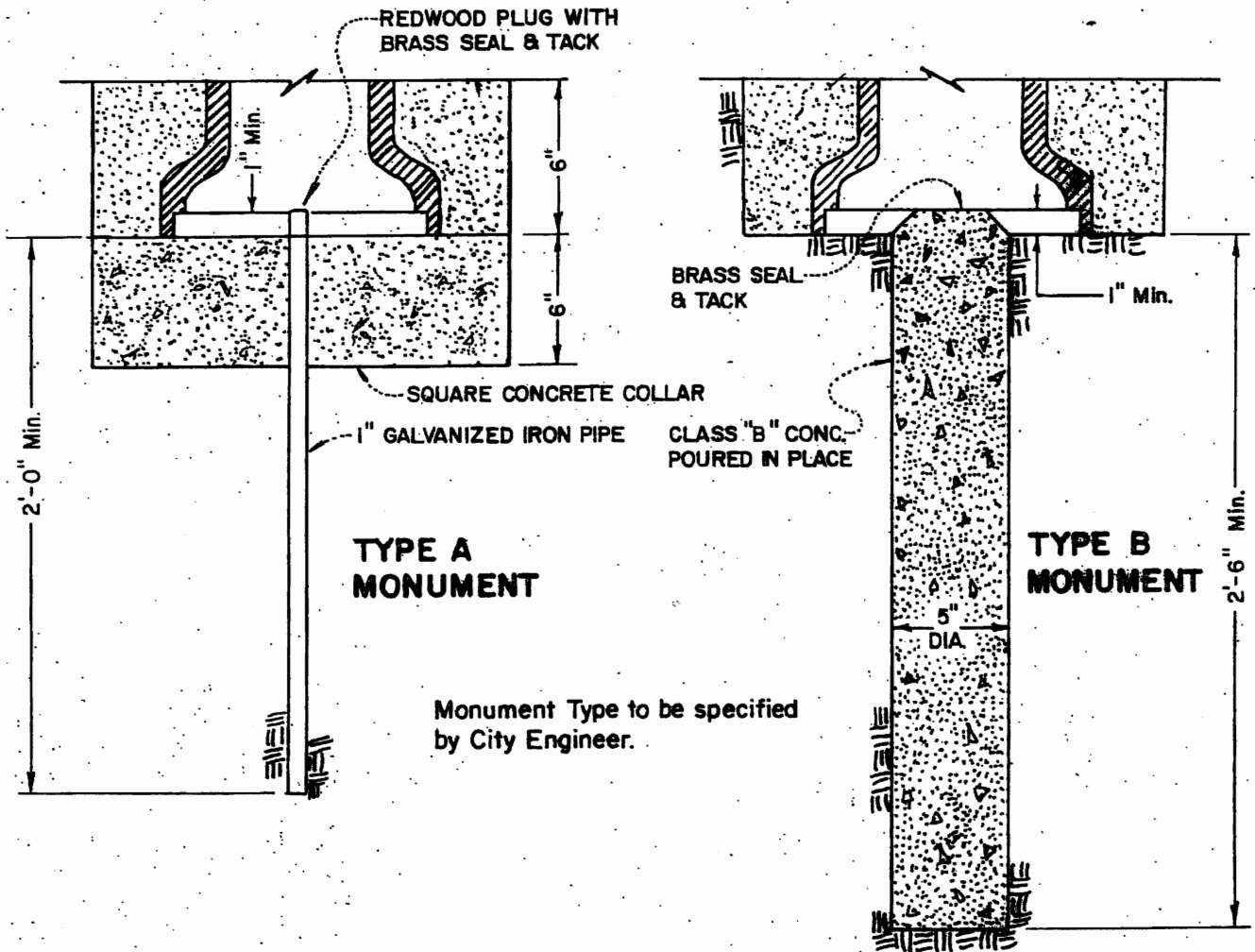
WOODEN TRASH CONTAINER ENCLOSURE

MARK	DATE	REVISION	Engineering Standard
			Approved <i>[Signature]</i>
			Date 9/14/79

MI-2



MONUMENT COVER
To be used with Type A or B monument



Monument Type to be specified
by City Engineer.

CITY OF *Lindsay*
DEPARTMENT OF PUBLIC WORKS

SURVEY MONUMENT

MARK	DATE	REVISION	Engineering Standard	MI-3
			Approved <i>[Signature]</i>	
			Date 9/14/79	